



DECEMBER 2023 NEWSLETTER

# The Bethesda-Chevy Chase Chapter of The Izaak Walton League of America

Serving the Community Since 1935

PO Box 542, Poolesville, MD 20837

[www.bcciwla.org](http://www.bcciwla.org)

## President's Message

While 2023 is winding down, the hustle and bustle of the holiday season is upon us. It has been a busy year, but I hope that soon you'll be able to put your feet up and enjoy the holiday season in the fashion that you choose to celebrate.

Hunting season is still in effect so be mindful of the Chapter's Hunting Rules and of others in the woods.

While the farm has been put to bed for the winter and the weather is a bit chillier at this time of year, the farm is still a great place to be. Walk a trail, look for birds, might spook up a deer or say "Hi" (tongue in cheek) to Guenther, Burt or SlapJack the bears.... from a safe distance away! The bears have been wandering the property and have been caught on trail cams so if you do come across one, let the Wildlife Chair Larry Anderson know. We have to do our best to protect them by not leaving trash or food out and keeping an eye on the bird feeders so we can limit drawing them into the areas where they would get accustomed to people.

To bring in 2024, you will find an article in this newsletter about the New Year's Day brunch and in February, there will be a Wild Game Dinner.

As a reminder to our members, if we do receive a lot of snow, the county is responsible for plowing Izaak Walton Way and the chapter handles from the gate inward. We do monitor the road but will not plow until the county does.

Wishing you and yours a Happy Holidays and a wonderful New Year.

Carol Hulce-Efdimis  
President

**Tickets are still available!**

★★★ Please support the Chapter by purchasing tickets ★★★

**B-CC IWLA CHRISTMAS SPORTSMAN**

**GUN RAFFLE**

*Firearms provided by Stateline Gun Exchange*



### Five Drawings:

**December 26 – Browning BPS 12 gauge Walnut/Blue or \$450**

**December 27 – Ruger American .22LR Walnut/Stainless Steel or \$275**

**December 28 – Bergara B 14 6.5 Creedmoor Walnut/Blue or \$500**

**December 29 – CAV Scout .450 Bushmaster Camo/Sniper Gray or \$300**

**December 30 – Henry Big Boy "Brass" 38-55 Win. Walnut/Blue (Straight Case Round) or \$600**

- Daily winner determined by MD Evening Pick 3 Straight Lottery number. Winner will be notified by phone or email (remember to add contact info on ticket stub).
- Your purchased ticket(s) will be available for the drawings on all five dates.
- Winner must contact Stateline Gun Exchange to claim prize. Must be picked up in 45 days after date of drawing.
- If you would like to purchase a ticket or are able to help sell tickets, contact: Andy Wight at [ConservationEd.BCC.IWLA@gmail.com](mailto:ConservationEd.BCC.IWLA@gmail.com)

## Board of Governors

Fiscal Year: September 1, 2023 – August 31, 2024

### OFFICERS

**Carol Hulce-Efdimis, President**

240 277-2494 • carol2017@aol.com

**Andy Wight, 1st Vice President**

240 205-3982 • andywight1@hotmail.com

**Francis (Jerry) Murray, 2nd Vice President**

202 438-4202 • jerrym5@comcast.net

**Bob Kelly, Treasurer**

202 445-7097 • rnkelly1974@gmail.com

**Scott Harmon, Membership Secretary**

301 467-0645 • scott.w.harmon@verizon.net

**Janet Lamkin, Corresponding Secretary**

301 466-6557 • j.lamkin@comcast.net

**Mark Lauver, Recording Secretary**

571 229-7858 • birddogkep@gmail.com

### BOARD MEMBERS

Deborah Behrend

Marc Bouchard

Dan Dutton

Joe Finnegan

Phil Taylor

**Walt Allensworth, Past President**

301 221-3594 • twangermd@gmail.com

\* Indicates Officers and Board Members who were absent from the previous month's Board of Governors meeting.

The Izaak Walton League of America – a non-profit conservation organization – is recognized as a Section 501(c)(3) public charity under the Internal Revenue Code.

Address, phone and email changes should be sent to the Membership Secretary at the above address.

Submissions to the *NEWSLETTER* should be sent to:

Janet Lamkin  
j.lamkin@comcast.net  
301 466-6557

## ★★ ATTENTION HUNTERS ★★

**Tree stands, ground blinds, or any other material that might "save" a location for a hunter must not be left out on chapter grounds overnight.**

## Summary of the October 2023 Board of Governors Meeting and the November 2023 Membership Meeting

Mark Lauver, Recording Secretary

### Wednesday, October 25, 2023 – Board of Governors Meeting

- President Carol Hulce-Efdimis called the meeting to order at 7:13pm.
- Easement Committee held its first meeting.
- Gun raffle tickets were distributed to BOG members.
- Talked to different Chapters at the MD Division meeting about Junior Rifle practices.
- Discussed shooting positions for Sporting Clays at the Shotgun Range.
- Marc Bouchard reported that Blaine McLaughlin borrowed archery equipment for the Bows & Arrows event at Fairfax Rod and Gun Club.
- Received donations for the Muzzleloader course.

### NEW BUSINESS (requires a vote):

- Motion made to send WSSI invoice to Legacy for payment. **Passed.**
- Motion made for a ARSA search and rescue seminar to be held at the Chapter on January 6 & 7, 2024. **Passed.**
- Motion made to accept one membership application. **Passed.**
- Motion made to accept Sporting Clays layout at the Shotgun Range. **Passed.**

### TALKS FOR THE GOOD OF THE CHAPTER:

- Discussed applying for grants for the Chapter – endowment grants from National and conservation education grants from DNR.

### Wednesday, November 15, 2023 – 1,057th Membership Dinner Meeting

- President Carol Hulce-Efdimis called the meeting to order at 7:30pm.
- Carol spoke about the Land Fund. She announced that it was decided not to hold the Land Fund drive this year due to the downturn in economic conditions. The Land Fund is still accepting donations, and she reminded us that it's important to have funds ready when land becomes available to purchase.
- Chapter member Bob Cissel of Montgomery Ag Producers (MAP) spoke about pending County and State legislative issues / bills.
  - There is an effort looking to codify into agriculture law "incidental outdoor stays." This would allow agricultural producers to have short-term temporary housing rentals. This is an AirBNB kind of arrangement.
  - Bob then talked about forest mitigation credits hoping to overturn current ruling that existing stands of forest can't be sold for credits.
  - Sixty percent of farmers are leasing the land they farm.
  - 1995 forest banking program (offset removal of trees by preserving 2 acres for each 1 removed). This program was discontinued in 2021. These credits are very useful and help maintain forests. Bob hopes this program will be reinstated. See <https://montgomeryplanning.org/planning/environment/forest-conservation-and-trees/forest-conservation-banks/>.
  - Lots of coyotes in Montgomery County. Fifty percent of the time does have twins. 15 percent of the time does have triplets.
- Membership Secretary Scott Harmon gave the breakdown of the membership count.

(continued on page 3)

**SUMMARY**

(continued from page 2)

- Treasurer’s Report included breakdown of funds in the Chapter’s five accounts – Operating, Near Term Capital Expenditure, Long Term Capital Expenditure, Land Fund, and Management Reserve.
- There have been pictures of what is believed to be two different bears in the NE woods.
- Bob Pavlick talked about the National Convention that will be held July 14-17 at the Hyatt in Cambridge, MD. See the article in the newsletter. There will be a raffle and silent auction.

Meeting adjourned at 8:30pm.

**December 2023  
1,058th Monthly Dinner /  
Membership Meeting**

**Wednesday, December 20**

**Dinner served starting at 6:15pm  
Membership Meeting starts at 7:30pm**

**Menu**  
*Appetizers will be available before dinner*  
Roast Beef, Baked Potatoes, Green Beans, Dessert

---

**December 2023  
Board of Governors Meeting**

**Wednesday, December 20**  
**(Immediately following the December  
Membership Meeting)**



Chapter members prepare the November dinner.  
PHOTO BY JERRY MURRAY

**REMEMBER...**  
Guest hunters **are not** permitted  
at B-CC IWLA.

**FeederWatch News and Seneca  
Christmas Bird Count**

Diane Seward  
Citizen Science Projects Coordinator  
trina65@verizon.net

On Sunday, December 17, we will host the Montgomery Bird Club (MBC) for a portion of the sixty-fourth Sector 7, Seneca Christmas Bird Count (CBC). The CBC, organized by The Audubon Society, is an annual nationwide event first conducted in 1958. Several MBC birders plus Larry Anderson and Scott Harmon acting as escorts will meet at 7:00am at the chapter house and set out in two groups for the morning count, which typically lasts until noon. If you would like to join the count, please contact the MBC count compiler, Jim Nelson, at kingfishers2@verizon.net .

**FeederWatch season has begun.** Chapter members fill the feeders behind the chapter house then count the birds that arrive to sample the sunflower seeds and suet for an hour or so on weekend mornings from the comfort of the chapter house. Each count is reported to Cornell University’s Lab of Ornithology. If you would like to participate, please email me. Newcomers are most welcome! Counting birds is educational, interesting, and helpful to the Cornell Lab scientists who analyze population trends. We are happy to partner newcomers with old hands.

**Help is Needed!**

**Environmental Stewardship  
Committee**

On a monthly basis, our Chapter has a Maryland certified lab take scheduled samples of the surface and potable water on our property. In addition to ensuring safe drinking water, these results allow us to monitor the impact of development outside our property, the containment of lead on our ranges, and the quality of our streams and ponds for aquatic life. The Chapter member who has been escorting the lab technician to the designated sites for the past 20 years is retiring from this duty at the end of the year and we are looking for one or more member(s) to take over this important work. The process takes a couple of hours once a month on a weekday.

If you are willing to help, please contact Blaine Elkins at blaineelkins@verizon.net.

**ATTENTION New Members!**  
**Chapter House cleanup this month will be on:**  
**Saturday, December 16**  
**Starting at 9:00am**

Join us and earn volunteer hours

**As a reminder – probationary (new) members  
need to help out in one chapter house clean-  
up as part of their sixteen volunteer hours.**

Questions? Contact John Lamb –  
jpatricklamb@aol.com

## Membership Committee Report

Scott Harmon, Membership Secretary  
scott.w.harmon@verizon.net 301 467-0645 (Cell)

As of the November Board Meeting, membership stands at 804 total Members: 434 Individuals, 273 Family, 6 Students, 1 Youth, 76 Retired, and 14 Associates.

Thirty-five percent of our membership has renewed for 2024. By renewing early, you help the chapter continue operating the farm and ranges during the fall months. There are three ways to renew.

1. By mail
2. In person at a dinner meeting
3. Online

Please choose the method that works best for you but also helps the chapter the most. To renew online, copy and paste the following link into your web browser: <https://bcciwla.org/memberrenew>. You can also go to our website home page and in the upper right corner of the page hover over the drop down menu called "Member Area". At the bottom of this menu, you will see Renew your membership; click on it to renew your membership.

As of November 11th, all renewals returned have been submitted to National for processing, and we hope to have your membership cards back to you before the first of the year.

Lastly, it is important to increase our membership during the coming year and the best way to do this is by inviting someone to a dinner meeting. Hope to see you and a lot of new faces at the December dinner meeting.

See you soon.

## HELP NEEDED IN THE KITCHEN - Membership Dinner Meetings

We are still in need of additional cooks for our dinner meetings. If you can help out in any way, either short or long term, please get in touch with Carol Hulce-Efdimis. The help does not have to be a long-term commitment, even cooking or helping for one dinner would be appreciated.

## Welcome to the B-CC IWLA Family!

At the November 2023 Membership Meeting, the following were inducted into the Chapter:

### Mike Baglio

**Interests:** Archery; Ponds & Streams; Rifle & Pistol

### Dennis Everett

**Interests:** Forestry; Ponds & Streams; Wildlife

### Michael Karns

**Interests:** Farming; Ponds & Streams; Rifle & Pistol

## UPCOMING EVENTS

B-CC IWLA and Community

**Check the Chapter website for updates!  
All dates are tentative and subject to change.**

### Chapter House Cleanup

Saturday, December 16  
9:00am – 12:00 noon

### 1,058th Membership Dinner Meeting

Wednesday, December 20  
Dinner – 6:15pm; Meeting – 7:30pm

### Board of Governors Meeting

Wednesday, December 20  
Immediately following the Membership Meeting

### Sporting Clays at the Shotgun Range

Sundays  
9:00am – 4:00pm

### ARSA Search & Rescue – Intro to Mantrailing Class

Saturday & Sunday, January 6 & 7  
8:00am – 4:00pm  
Chapter House and grounds

### New and Prospective Members Orientation Tour

Saturday, January 20  
10:00am – 11:30am

### Orienteering Event (B-CC's Adventure Committee) at Little Bennett Regional Park

Saturday, January 20  
Starting at 10:00am

### Wild Game Dinner

Saturday, February 10  
6:00pm – 10:00pm

## Adventure Committee Hosts Inaugural Workshop

On Saturday, November 4, 2023, the B-CC IWLA Adventure Committee hosted its first workshop, "Reducing Bodily Visibility: Becoming One With The Woods." Ikes from as far afield as St. Michaels, MD, joined BCC members to learn from the chapter's own Mark Gochour how he disappears into nature when hunting, hiking, and taking photographs. Mark shared pictures and videos to complement his tips and tricks for getting within arm's reach of animals before leading the group out of the clubhouse on a short nature walk to identify deer sign and demonstrate tactics for staying stealthy. Workshop participants then returned to the clubhouse for a feast of hamburgers, hot dogs, and sloppy joes provided by 1st Vice President Andy Wight. Good eating and conversation ensued before the group adjourned for the day.

As the inaugural Adventure Committee workshop leader, Mark earned high praise from attendees for his knowledge and enthusiasm and set the program on track for future success. The Committee looks forward to providing more opportunities for B-CC IWLA members to teach and learn from one another. If YOU have outdoor skills you would like to share with fellow Ikes, please contact Mike Dobson at michaelvdobson@protonmail.com to discuss workshop ideas.

# CALENDAR OF EVENTS

All dates are tentative and subject to change. Check the website for updates.

## Monthly Events

Saturdays & Sundays (through late March)  
Sundays  
Mondays

FeederWatch Program  
Sporting Clays at Shotgun Range  
BSA Scout Meetings in the Chapter House

See SignUp Genius  
9:00am – 4:00pm  
7:30pm – 9:00pm

## DECEMBER

Saturday, December 2	Chapter House Holiday Decorating	9:00am – 5:00pm
Sunday, December 3	Deer Firearms Season	Hunting only until 10:30am
Thursday, December 7	Pack 694 Den (Kyle) Meet in Chapter House	7:00pm – 8:00pm
Saturday, December 9	Adopt-A-Road	8:15am – 12:00 noon
Saturday, December 9	Chapter Holiday Party - pot luck appetizer / dinner/ desserts	6:00pm – 11:00pm
Sunday, December 10	Shotgun Range Closed due to weather	Closed
Sunday, December 10	Pack 694 Den Meet (Michelle) in Chapter House	3:30pm – 5:00pm
Thursday, December 14	Pack 694 Den Meet (Kyle) in Chapter House	7:00pm – 8:00pm
Friday, December 15	Pack 694 Den Event in Chapter House	5:30pm – 9:00pm
Saturday, December 16	Chapter House Cleanup	9:00am – 12:00 noon
Sunday, December 17	Montgomery Bird Club's Christmas Bird Count	7:00am – 12:00noon
Sunday, December 17	Pack 694 Den Meet (Zoe) in Chapter House	10:00am – 12:00 noon
Wednesday, December 20	1,058th Membership Dinner Meeting	Dinner starts 6:15pm Meeting starts 7:30pm
Wednesday, December 20	Board of Governors Meeting	Immediately following Dinner Meeting
Friday, December 22	Articles for January Newsletter due – send articles to <a href="mailto:j.lamkin@comcast.net">j.lamkin@comcast.net</a>	By End of Day

## JANUARY 2024

Monday, January 1	New Year's Day Brunch	12:00 noon – 2:00pm
Saturday, January 6	ARSA Search & Rescue – Intro to Mantrailing – Chapter House and grounds	8:00am – 4:00pm
Sunday, January 7	ARSA Search & Rescue – Intro to Mantrailing – Chapter House and grounds	8:00am – 4:00pm
Thursday, January 11	Pack 694 Den Meet (Kyle) in Chapter House	7:00pm – 8:00pm
Saturday, January 13	Chapter House Cleanup	9:00am – 12:00 noon
Wednesday, January 17	1,059th Membership Dinner Meeting	Dinner starts 6:15pm Meeting starts 7:30pm
Saturday, January 20	New and Prospective Members Orientation Tour	10:00am – 11:30am
Saturday, January 20	Orienteering Event at Little Bennett Regional Park – see article on page 10	Starting at 10:00am
Wednesday, January 24	Board of Governors Meeting	7:00pm
Thursday, January 25	Pack 694 Den Meet (Kyle) in Chapter House	7:00pm – 8:00pm
Friday, January 26	Articles for February Newsletter due – send articles to <a href="mailto:j.lamkin@comcast.net">j.lamkin@comcast.net</a>	By End of Day
Sunday, January 28	Pack 694 Den Meet (Michelle) in Chapter House	3:30pm – 5:00pm

## FEBRUARY

Saturday, February 3	NAVHDA Mid-Winter Meeting	8:00am – 5:00pm
Saturday, February 10	Chapter House Cleanup	9:00am – 12:00 noon
Saturday, February 10	Wild Game Dinner	6:00pm – 10:00pm
Thursday, February 15	Pack 694 Den Meet (Kyle) in Chapter House	7:00pm – 8:00pm
Saturday, February 17	New and Prospective Members Orientation Tour	10:00am – 11:30am
Wednesday, February 21	1,060th Membership Dinner Meeting	Dinner starts 6:15 Meeting starts 7:30pm
Friday, February 23	Articles for March Newsletter due – send articles to <a href="mailto:j.lamkin@comcast.net">j.lamkin@comcast.net</a>	By End of Day
Saturday, February 24	Pack 694 Blue and Gold Dinner	5:00pm – 9:00pm
Wednesday, February 28	Board of Governors Meeting	7:00pm
Thursday, February 29	Pack 964 Den Meet (Kyle) in Chapter House	7:00pm – 8:00pm

The Campground is closed during all black powder and firearms deer season.

## Calendar Submissions

Meetings and events that need to be added to the website calendar and newsletter calendar should be sent to both 1st Vice President Andy Wight, [andywight1@hotmail.com](mailto:andywight1@hotmail.com), and Corresponding Secretary Janet Lamkin, [j.lamkin@comcast.net](mailto:j.lamkin@comcast.net).

## CAMPGROUND NOTICE

The Campground is closed during all black powder and firearms deer seasons.

## DRAGNet Global Research Study

Betsy von Holle  
Betsy.VonHolle@email.gwu.edu

The second year of the ecological experiment conducted at IWLA was kicked off with Bob Cissel plowing the experimental plots on Friday, November 3rd. Many IWLA volunteers, as well as local students, helped remove grasses from the tilled plots the next day. Dr. Betsy von Holle, of George Washington University, is conducting this research on our conservation farm, which is one of over 100 sites around the world:

**DRAGNet Sites | Nutrient Network:  
A Global Research Cooperative**  
[nutnet.org](http://nutnet.org)

This research can be used to understand how to best manage wildlife habitat.



PHOTOS BY BETSY VON HOLLE AND ARTHUR BELENDIUK

# 50/50 Raffle

Help Support the Chapter!



Raffle tickets will be available at the monthly dinner meeting

**\$1 per ticket or 6 tickets for \$5**

50% goes to the ticket holder – 50% goes to the Chapter to help purchase new Adirondack chairs for the Chapter House porches

**Our goal is to purchase 15 chairs**

## Friendly Reminder:

All chapter members wishing to hunt on our farm **must**:

- 1) Have a valid MD hunting license (including all necessary stamps, i.e. HIP stamp for doves)
- 2) Have a current and valid B-CC IWLA membership card as proof of permission to hunt on private land
- 3) Have a current and valid parking sticker displayed on their vehicle
- 4) Register on our website to acknowledge understanding our rules and property boundaries. This is a yearly requirement.

Questions? Contact Larry Anderson, Wildlife Committee Chair, andupton9@hotmail.com or 240 246-5302.



**Saturday, February 10  
6:00pm – 10:00pm**

Pictures are needed for the slide show. Please email pictures in PDF format to:

Scott Harmon  
[scott.w.harmon@verizon.net](mailto:scott.w.harmon@verizon.net)

More information about the event will appear in the January newsletter and eblast.

## 2023 Interpretive Walk In The Woods

B-CC IWLA Conservation Committee

Six B-CC IWLA members, Frank Parker, Mark Gochnour, Gregg Gochnour, Blane Elkins, Andy Wight, and Butch Mezick, hosted 80 Poolesville High School Global Ecology students on an "Interpretive Walk in the Woods." A morning tour and an afternoon tour of 20 students featured our West Woods as a living classroom, starting Thursday morning and ending Friday afternoon. The students began their walk by hiking



up a steep hill, stopping just below the hill's crest, where we discussed soil erosion and the formation and composition of that precious natural resource, "Topsoil." Continuing our hike up the hill, we discovered a naturally created buck rub accompanied by two buck scrapes. Bush honeysuckle and stink bugs, examples of invasive plant species, were presented next, followed by a presentation of Chestnut Oak Blight. Our next stop was a pile of trash, where we discussed the incredible longevity of different types of trash; a Styrofoam bait container lasts one million years before it decomposes. We challenged the students to develop the talent of seeing and comprehending by demonstrating how to walk and see their surroundings. Our guests were taught to identify three species of oak trees, red, white, and chestnut, by their bark and leaves. After continuing our walk, a discussion of tree stump sprouts was followed by a presentation of white-tailed deer habitats as antlers passed among the students. The hikers advanced to an obsolete power line right of way, showcasing the high-rise developments on the other side of the Potomac River. Here, we explained zoning laws, development in general, and the Montgomery County Agricultural Reserve. Next, the components of habitat required by all animals were described, leading to an explanation of the devastating impact of human development on all other plants and animals in the natural world. The Federal Aid in Wildlife Restoration Act, better known as the Pittman-Robertson Act, was highlighted with its contribution to date of over 23 billion dollars to wildlife and wildlife habitat since its inception in 1937. The students advanced on the trail until full-size turkey decoys were observed. Here, the incredible sight and hearing of turkeys were discussed, followed by a demonstration of turkey box, slate, and mouth calls. Further along the trail, we stopped at a seasonal stream bed and discussed fresh water. Following the water presentation, we explained the miraculous natural process of photosynthesis, absorbing carbon dioxide and water and producing sugar and oxygen, stimulated by the sun's energy. We proceeded to the exam area. Yes, the interpretive walk in the woods includes an exam where the students work individually during a period of silence in an area that is rich in examples of topics previously discussed and where the tour guides have planted items of interest. Each student is allowed to explain to the others what they found and share information about their discovery. A brisk walk followed a short stop by our abandoned mine as we completed the hike to the waiting bus.

Many thanks to the B-CC IWLA Trails Committee led by Brian King who once again cleared the trails used by 80 students and six presenters.

With programs such as the "Interpretive Walk in the Woods," the B-CC IWLA integrates into the surrounding communities by providing conservation education to the next generation of conservationists.

## The Maryland State Division is hosting the 2024 National Convention

Sunday, July 14 – Thursday, July 17

Hyatt Regency Chesapeake Resort  
A Great Place for a convention  
and a vacation!  
Bring the Family and enjoy the  
Eastern Shore Experience.

### IWLA 2024 National Convention in Cambridge, Maryland July 14 – 17, 2024

Planning your 2024 summer vacation? You should consider attending the IWLA National Convention being held at the Hyatt Regency Hotel in Cambridge, MD. The Hyatt Regency is a five star hotel located on the banks of the Choptank River, near where it empties into the Chesapeake Bay. There will be lots of opportunities for all kinds of water sports. A great opportunity for a Family Vacation.

#### SCHEDULE OF ACTIVITIES

**Sunday, July 14** – A travel day. There will be an *Early Bird Social* held in the evening featuring door prizes, raffles and an auction. Finger food provided. Cash Bar.

**Monday, July 15** – Convention opens. A *Parade of States* social in the evening. Always fun. Each attending state has an open room at which they provide food and drink. You will not go away hungry or thirsty.

**Tuesday, July 16** – Convention work terminates at close of business day. *Convention Banquet* in the evening. (Ladies you can dress up for this one.)

**Wednesday, July 17** – A totally fun day. Tentatively scheduled are deep sea fishing out of Ocean City, Chesapeake Bay fishing, sailing, dining on a paddle boat featuring all-you-can-eat buffet or crabs, sight seeing, etc.

#### YOUTH CONVENTION

A program for kids from 8-18 years featuring chaperoned ecology oriented fun activities. The youth may be divided into two or more age groups. Always a great hit with the kids. Details concerning registration and activities will follow.

#### ROOM RATES

The convention rate is \$175 per night + taxes. There will be no Resort Fee (which would have been an additional \$40 per day). This convention rate is half the regular rate, and applies to three days before and three days after the convention dates.

You can also stay at one of the other neighboring hotels, and still participate in the convention activities.

The chapter is allotted a certain number of voting delegates. The Chapter provides financial support for the voting delegates, and you should inform the chapter president if you wish to attend as a voting delegate.

The deadline for making hotel reservations is June 17.

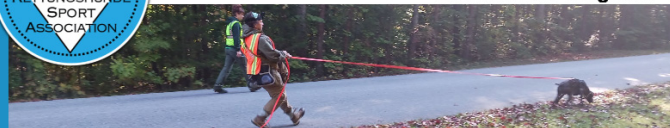
AMERICAN RETTUNGSHUNDE SPORT ASSOCIATION

WINTER 2024 INTRO TO MANTRAILING SEMINAR



Saturday and Sunday, January 6 & 7, 2024

with Melissa Stagnaro



### ARSA Intro to Mantrailing Seminar

Seminar will be held at the B-CC IWLA Chapter

On Saturday and Sunday, January 6 and 7, 2024 from 8:00am to 4:00pm (approximately), a seminar will be held at the Chapter to focus on teaching the basics of mantrailing for search and rescue. Dogs and handlers of all levels are welcome (including those with no experience), as well as dogs of all ages (including puppies).

The fee involved is per dog-handler team: **Both days** – \$50, **DAY 1** – \$30 \*Because DAY 2 builds on DAY 1, you may only attend either DAY 1 or both DAY 1 & DAY 2.

Some general info for the seminar: The lecture portion will be indoors, but plenty of time will be spent outdoors, so dress accordingly. Dogs must be kept in your vehicle when not working. Do not wander off! We will be working in areas near where hunting is permitted. Do not air dogs other than on leash and in the immediate vicinity of the clubhouse.

Contact, registration (**you must register in advance for this event**), payment information, and information about instructor Melissa Stagnaro can be found on the link below:

<https://bcciwla.org/event/intro-to-mantrailing-seminar/>

Note: When placing your mouse arrow in the lower left corner of the blue border, the icons to flip to the 2nd page of the flyer will appear.

### 2nd Annual New Year's Day Brunch Monday, January 1



Join your fellow members on New Year's Day in the Chapter House for Brunch and Football!

For the 2nd year, Meg O'Rourke will be cooking up a delicious brunch for all to enjoy. We will have College Bowl Games on the big TV, a waffle bar, and a wonderful selection of hot food and cold drinks. Enjoy the Chapter House decorations one last time before they come down for the year.

Brunch will be served from 12:00 noon – 2:00pm but feel free to hang out and watch college football all afternoon. We will have RO's on duty for both R&P and Shotgun Ranges (be mindful that it is Archery Season so hikers need to be wearing bright colors) so get in some range time, then head on up for Mimosas, Bloody Marys, and some brunch!



## Rifle & Pistol Committee Report

Gus Zinsser, Chair  
240 750-0979 guszinsser4@gmail.com

Matthew Chambers, Chief Range Officer  
202 854-8671 matthewschambers@gmail.com

The R&P Range is now closed to the general membership. It will reopen in March 2024 (dates TBD). Range Officers and their guests can use the range unless otherwise closed to all.

The Range moved to Winter Hours. It is now open 9:00am to 4:00pm until mid March.

### REMINDER:

The Standard Operating Procedures (SOP's) for the range have changed. Please review the SOP's before coming to the range to re-familiarize yourself and guests with the firearms transporting and safety procedures for our range. This will help you and our range officers to maintain a safe environment.

### PLEASE REMEMBER:

- Put paper in the trash. If the cans are full, please empty them.
- Keep watch on guests you bring. It is your place to brief them on the SOP's.
- Be safe and enjoy the range respectfully.
- **All must PICK UP THEIR BRASS!**

### EXISTING R&P RANGE OFFICER REFRESHER

We will be holding existing R&P Range Officer refreshers in mid-January/February. This refresher will be virtual and help us streamline the annual in-person signup day.

We will announce the dates in the January newsletter. In addition, we will email an announcement to existing R&P Range Officers.

If you have any questions, please contact the Chief Range Officer Matthew Chambers at 202 854-8671 or matthewschambers@gmail.com.

### NEW R&P RANGE OFFICER ORIENTATION

At this time, we are gauging interest in a new Range Officer orientation for late February/early March. To be eligible to participate you must:

- be a current member of the B-CC IWLA Chapter in good standing who has completed their probationary membership year
- be 21 years of age
- eligible to legally possess a firearm
- current in all B-CC IWLA Chapter dues

A list is being created and you will be contacted with significant notice of the date. If you have not completed your probationary year, please contact us anyway. We will be able to create a list for future classes.

If you are interested in becoming an R&P Range Officer, please contact Chief Range Officer Matthew Chambers at 202 854-8671 or matthewschambers@gmail.com.

### R&P RANGE TRAINING & EVENTS SURVEY

We ask that members complete the following survey, which will help us plan training and events on the Rifle & Pistol Range in 2024:

<https://forms.gle/dDE5yTT15dkPj3Bt6>

If you have any questions, please contact the Chief Range Officer Matthew Chambers at 202 854-8671 or matthewschambers@gmail.com.

## Shotgun Range Committee Report

Warner Parks, Chair  
240 620-6942 wparks29@gmail.com

The Shotgun Range has been open for a couple of weeks and our members along with their guests seem to be enjoying it.

As was announced, we are only running a field of Sporting Clays with 8 shooting positions and changing menus. Our members have stated that the field is challenging and fun.

We are honoring the Sporting Clays tickets that were bought previous to the suspension of activities. If you bought Trap & Skeet tickets before the suspension, we will honor a round of Sporting Clays using those tickets. It will be 2 of Trap & Skeet tickets plus \$2 for the round of Sporting Clays.

There will be ROs on duty unless the weather is not conducive to have it opened. If the range is not going to be CLOSED, it will be posted on the website calendar the night before.



Range Officers review the Sporting Clays layout at the Shotgun Range on November 18



Photos by Andy Wight



Check out our Facebook page!  
Izaak Walton League of America  
Bethesda-Chevy Chase Chapter

## Orienteering Event at Little Bennett

The B-CC IWLA Adventure Committee is organizing teams to participate in an orienteering event on Saturday, January 20, 2024.

Orienteering is the sport of using a map and compass to navigate from one point to another. Skills developed through orienteering can be used in hiking, trail running, and simply exploring any mapped area.



The event is being organized by the Quantico Orienteering Club (QOC) and will take place at Little Bennett Regional Park. While this event is open to QOC's members and the public, participants from B-CC IWLA will start the day at 10:00am and be given a brief introduction to orienteering and training session before being sent on the course. Participants can run the course solo or as part of a group (max 4 per team) and

orienteer at their own pace for up to two hours. (The Adventure Committee would like to field as many B-CC IWLA teams / entrants as possible, as orienteering skills will be useful in future activities).

If you are interested in joining us, please click on the Signup Genius link below. We will use this to keep interested B-CC IWLA members informed of QOC registration dates, answer any questions, and coordinate any individuals looking to join teams:

<https://www.signupgenius.com/go/10COD4DACAA28A7F8C25-46635246-ilwa>

Note: Actual Registration at the QOC website for the event will begin on January 15th. The cost to participate is \$20 per adult and \$5 for juniors (under 21) up to a maximum of \$30 per 3-4-person group.

Contact Mike Dobson at [michaelvdobson@protonmail.com](mailto:michaelvdobson@protonmail.com) for any questions.

## I was asked why I have contributed to the B-CC IWLA Land Fund for over 20 years?

*Tom Sigman*

I contribute to ensure my grandchildren will have a place to shoot and hunt. I contribute to the B-CC IWLA Land Fund to protect our conservation farm from the total detrimental effects of development on our boundaries. When I look at my grandchildren and think about how much more development will take place during their lifetime, I am concerned about their future opportunities to experience a natural environment of woodlands, ponds and streams, and open fields. I contribute to help protect my chosen life style and system of values. I contribute for my family, your family, and most particularly for the families of the B-CC IWLA that will benefit from my contributions as my family has benefited from the contributions of those that went before me. I have witnessed the tremendous power of our chapter's Land Fund to accomplish what others only dream of, the purchase of surrounding property.

### 2023 Land Fund

As a member of the B-CC IWLA, I want to do my part and contribute the following amount to the B-CC IWLA Land Fund Campaign.

Name \_\_\_\_\_

Address \_\_\_\_\_

City \_\_\_\_\_ State \_\_\_\_\_ Zip \_\_\_\_\_

\_\_\_\_\_ \$50 \_\_\_\_\_ \$100 \_\_\_\_\_ \$200 \_\_\_\_\_ \$500 \_\_\_\_\_ \$1000 \_\_\_\_\_ OTHER

*Your contribution is tax deductible.*

Please mail contribution form and check (made payable to B-CC IWLA) to B-CC IWLA, PO Box 542, Poolesville, MD 20837 or donate via paypal on the Chapter's website, [www.bcciwla.org](http://www.bcciwla.org).

## Trout Stocking Small Pond

John Novak, Ponds & Streams Committee, Co-chair  
novakgang4@comcast.net

On November 3, 2023, Musky Trout Hatcheries, LLC from Asbury, New Jersey stocked 200 rainbow and brown trout in the small pond for a put and take fishery for chapter members and immediate family members. This private hatchery is certified by Maryland Department of Natural Resources (MDNR) to stock trout in Maryland waters and, prior to stocking these trout, the chapter's Ponds & Streams committee applied for and received a permit from the MDNR.

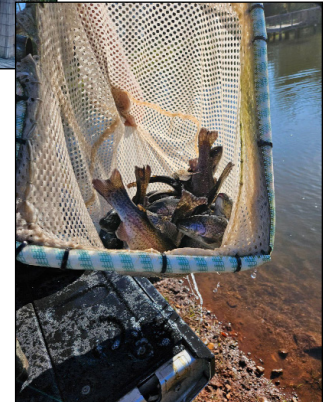


After allowing a couple of days for the trout to acclimate to this new environment, fishing was opened with a catch limit of three trout per angler per day. A detailed list of fishing rules was published in the November newsletter. These rules are also posted around the small pond.

To date, about 50 trout have been removed from the small pond, leaving around 150. It is important that these trout be harvested as they will not survive once water temperatures begin to climb next spring, The small pond aerator will remain in operation throughout the remainder of fall and into the winter months as long as the pond surface remains ice-free.

So, anglers grab your fishing rod and come out to the small pond – the trout are jumping! The best lures for catching

trout have been super-duper and Mepps while wooly bugger has been the best fly. Earth worms may also work. Anglers are reminded to report their catch to John Novak, 301 385-0943 or Pete Wirth, 301 915-6763.



## Christmas Trees

Christmas trees are available to chapter members. Trees are \$30 each, payable to either members of the BOG or mailed to the treasurer at the chapter's PO Box (B-CC IWLA, PO Box 542, Poolesville, MD 20837).

Trees are **"cut your own"** and are in the field on the left along the drive towards the shotgun range. Many trees are already pre-decorated with items like bird nests and mantis cases, no extra charge. There are many small trees planted by our members during workdays, which may not be easily visible, so please step carefully around in the rows of our future crop.

Some of the trees may be "tagged" by members that wish to trim them to their specifications. Please respect the tags and choose another tree. Also, leave stumps either tall enough to be easily visible or cut them flush to the ground. Hidden stumps wreak havoc on the mowing efforts. Trimmed branches should be placed in the woods at the bottom of the hill.

Any questions, contact Larry Anderson, 240 246-5302, or andupton9@hotmail.com.

## New and Prospective Members Orientation Tour

Come join us on the B-CC IWLA Orientation Tour. The next tour will take place on **Saturday, January 20, 2024** from 10:00am to approximately 11:30am **if weather permits**.

This event is open to all members (new and old) and those who are interested in membership to the chapter or just curious about what we do.

The guided tour of our property will include an overview of our history and mission, our facilities, the partnerships with local schools and organizations, and a chance to meet and ask questions to current members.

Meet Christine Peterson at the Chapter House. Follow Izaak Walton Way through the gate to the Chapter House parking lot where we will be meeting to start the tour.

Contact Christine – christineakcp@comcast.net if you have questions.

## Driving on Chapter Property

Privately owned vehicles are to remain on the main Chapter roads at all times. They are **NOT** allowed to drive through the fields or park in open areas. This includes no vehicle traffic to the back pond or in the fields unless the vehicle is in use in conjunction with a project being overseen by a Chairman or Committee.

## Hi-Power Rifle Event

On Saturday, November 18, we held a CMP/NRA format Hi-Power rifle event on the range. The shooters got to shoot from the prone, sitting, and standing positions in a series of timed stages with targets set at 100yd. The participants ranged in age from 12 into their 60's and the rifles that were used had a similar range from a 1903 model springfield to modern AR-15's. If this interests you, please send me an e-mail at: [jerrym5@comcast.net](mailto:jerrym5@comcast.net) and we will try set up another one in the spring.



## B-CC IWLA Legacy Foundation Board Appointment

While the BCC- IWLA Legacy Foundation is a separate corporation, the instrumental role that it holds within the Chapter is integral to its mission and the welfare of the Chapter.

The Legacy Foundation holds and ensures the financial management of funds acquired from the 624 acres of the B-CC IWLA property (i.e. Rural Legacy funds, Forest Mitigation Credit sales, Easements, TDRs, etc.). Acting essentially as an endowment devoted to the welfare of the Chapter, the Legacy Foundation loans or gives money to the Chapter to fund land purchases and other projects (especially emergencies) outside of the Chapter's annual budget, avoiding detrimental financial burdens upon its operating budget and has allowed the Chapter to thrive in its mission.

The BCC-IWLA Legacy Foundation is run by a board of directors, all the members of which are appointed or elected by the Chapter and the Board of Governors. One member of the Legacy board has resigned from their Chapter elected position. Therefore, a replacement has been nominated by the President with the intent to finish out the term of the resigned Legacy Board member. A vote of the Chapter members on that proposed replacement appointee to the Legacy Foundation board will be up for a member elected vote at the Chapter's December 2023 monthly Dinner meeting.

The replacement nominee is Lawrence Kotchek. Lawrence is a 20+ year chapter member, who has previously served as a Legacy Foundation board member and as Legacy Foundation President. His service record to the Chapter is commendable and he has proven to be aligned with mission of both the Chapter and the Legacy Board.

**DUE DATE**  
for January Newsletter Articles is  
**Friday, December 22**

Submit articles to: [j.lamkin@comcast.net](mailto:j.lamkin@comcast.net)  
If the article contains photos, please submit them as separate jpg files and include a caption and photo credit.

IMAGE OF THE BEAR BY BARRY DANIEL



## Common Slime Molds of B-CC IWLA









Valerie Chen  
George Washington University  
valeriechen@gwu.edu

If, while on a walk in the woods, you lean over to look closely at a damp decomposing log, you might be rewarded with a glimpse of tiny clustered structures, often strikingly vibrant, tucked amongst the brown ridges and gullies. Upon closer inspection, elaborate textures such as long chocolate-colored tubes, delicate white snowflakes, pink cotton-candy-like pompoms, or bright red, bumpy raspberries reveal themselves. These are slime molds, an often-overlooked group of organisms with complex multi-stage life cycles that occur on rotting wood.

This past summer, Valerie Chen, an undergraduate student working in Dr. John Lill's lab at George Washington University, began an ongoing survey of the mushrooms and slime mold species that occur at B-CC IWLA. Slime molds were formerly thought to be a type of fungus, but are now known to be terrestrial amoebas – a type of single-celled protozoan. Slime mold life cycles include both a single-celled stage and an aggregate stage, where the individual amoeboid cells cluster together in response to environmental stress to feed on other microorganisms, mainly bacteria. This aggregate eventually produces a spore-bearing 'fruiting body' that enables the slime mold to reproduce. The aggregate form of a slime mold often looks wildly different from its fruiting body, which is the most reliable stage for identification. Once a slime mold aggregate is found, it is exciting to watch it move and shape-shift as it forms its distinctive fruiting bodies – all of which can happen within hours to days! Slime molds are an understudied group both in terms of their species diversity and their complex social behaviors. With the help of Dr. Lill and Dr. Martha Weiss of Georgetown University, Valerie so far has recorded 14 species of slime molds in the oak-hickory forest near the Scout Camps. We encourage B-CC IWLA members to appreciate the ephemeral and charming slime molds at the site and anywhere else they may encounter fallen wood or leaf litter. The naked eye is sufficient to spot slime molds but a hand lens can reveal intricate details. To the right is a picture guide to some of the most common slime molds recorded at B-CC IWLA.



Deer Rub

Scientific Name	Common Name
	
<i>Acryria Denudata</i>	Pink Carnival Candy Slime
	
<i>Lycogala Epidendrum</i>	Wolf's Milk Slime
	
<i>Stemonitis</i> Sp.	Chocolate tube slime (aggregate phase, or 'plasmodium' pictured above)
	
<i>Tubifera Ferruginosa</i>	Red Raspberry Slime

PHOTOS BY VALERIE CHEN AND MARTHA WEISS