



NOVEMBER 2023 NEWSLETTER

The Bethesda-Chevy Chase Chapter of The Izaak Walton League of America

Serving the Community Since 1935

PO Box 542, Poolesville, MD 20837

www.bcciwla.org

President's Message

We have entered the Holiday season and even though the farm itself has been put to bed, there is still a lot to enjoy at the chapter in its downtime. The Fall colors are still dropping, hunting season, bird watching, fishing the newly stocked front pond, ranges are open, and a few upcoming events to round out the rest of the year.

There is an abundance of wildlife on the property so if you are able to get pictures, pass it on to the Wildlife Chair Larry Anderson. The pictures could be used in the newsletter or added to the website. We've already had bear sightings on the property so be mindful of your surroundings.

Welcome to Fall.

Carol Hulce-Efdimis
President



PHOTO BY CAROL HULCE-EFDIMIS

★★ ATTENTION HUNTERS ★★

Tree stands, ground blinds, or any other material that might "save" a location for a hunter must not be left out on chapter grounds overnight.



Annual Holiday Party

The Chapter will host its Holiday Party on Saturday, December 9 starting at 6:00pm.

Members, their families and/or guests are all invited to attend this casual event for an evening of great company, wonderful food, and holiday cheer. All attendees are asked to bring an entrée to share with their fellow holiday revelers. A side dish and/or dessert are a welcome choice also. We will provide the beverages.

You may also bring your own beverage of choice.

This year's party will be festive and fun with the food being a feast for the holidays. So kick your holiday spirit in gear and come on out!



New-Member Orientation Tour

- The next tour will take place on *Saturday, November 18* from 10:00am to approximately 11:30am *if weather permits*.
- Meet Christine Peterson at the Chapter House.
- The front gate will be open until the tour begins.
- New members, prospective members, and current members are invited to take the tour.
- Contact Christine – christineakcp@comcast.net if you have questions.

CAMPGROUND NOTICE

The Campground is closed during all black powder and firearms deer seasons.

Board of Governors

Fiscal Year: September 1, 2023 – August 31, 2024

OFFICERS

Carol Hulce-Efdimis, President

240 277-2494 • carol2017@aol.com

Andy Wight, 1st Vice President

240 205-3982 • andywight1@hotmail.com

Francis (Jerry) Murray, 2nd Vice President

202 438-4202 • jerrym5@comcast.net

Bob Kelly,* Treasurer

202 445-7097 • rnkelly1974@gmail.com

Scott Harmon, Membership Secretary

301 467-0645 • scott.w.harmon@verizon.net

Janet Lamkin, Corresponding Secretary

301 466-6557 • j.lamkin@comcast.net

Mark Lauver, Recording Secretary

571 229-7858 • birddogkep@gmail.com

BOARD MEMBERS

Deborah Behrend*

Marc Bouchard

Dan Dutton

Joe Finnegan

Phil Taylor

Walt Allensworth, Past President

301 221-3594 • twangermd@gmail.com

* Indicates Officers and Board Members who were absent from the previous month's Board of Governors meeting.

The Izaak Walton League of America – a non-profit conservation organization – is recognized as a Section 501(c)(3) public charity under the Internal Revenue Code.

Address, phone and email changes should be sent to the Membership Secretary at the above address.

Submissions to the *NEWSLETTER* should be sent to:

Janet Lamkin
j.lamkin@comcast.net
301 466-6557

AS A REMINDER...

All chapter members wishing to hunt on our farm must register on the Chapter website

<https://bcciwla.org/b-cc-iwla-chapter-hunting-rules/>
to acknowledge understanding our rules and property boundaries. This is a yearly requirement.

Summary of the September 2023 Board of Governors Meeting and the October 2023 Membership Meeting

Mark Lauver, Recording Secretary

Wednesday, September 27, 2023 – Board of Governors Meeting

- President Carol Hulce-Efdimis called the meeting to order at 8:00pm.
- Search and rescue group would like to have an event at the Chapter on January 6 and 7, 2024.
- David Boynton, Legacy Foundation Board Treasurer, spoke about the history and purpose of the Foundation.
- 1st VP Jerry Murray reported on the proposed sporting clays course.
- Treasurer Bob Kelly gave his report on the Chapter's account balances.
- Deborah Behrend reviewed the 2023 – 2024 budget including budgeting / accounting principles.
- Gun Raffle was discussed.
- 2nd VP Jerry Murray is attending meetings at several chapters about their Junior Rifle teams with the goal to re-initiate a team at B-CC.

NEW BUSINESS (requires a vote):

- **Motion passed unanimously** to accept one application for membership.
- **Motion passed unanimously** for BSA week-long use of chapter June 24 – 28, 2024.
- **Motion passed unanimously** for BSA Potomac District to use Chapter House on August 24, 2024 for end of year celebration.
- **Motion passed unanimously** for use of Chapter House and fire pit for a BSA Eagle Scout Court of Honor on Saturday, November 18, 2023.

Wednesday, October 18, 2023 – 1,056th Membership Dinner Meeting

- President Carol Hulce-Efdimis called the meeting to order at 7:25pm.
- Deborah Behrend presented the 2023-2024 Budget for membership approval and discussed:
 - Chapter converted to QuickBooks online with new analytic tools.
 - Current financial statements will be available at every dinner meeting.
 - Membership is the key driver for finances.
 - There was about a 15% decrease in membership in 2022-2023. We had a large increase during COVID; competing activities post COVID caused a drop in membership.
 - Per the Bylaws, there are several set asides of funds:
 - o Chapter required to put 10% of all membership revenue into the Near-Term Capital Fund.
 - o The dues increase, established in 2021, goes into the Long-Term Capital Fund.
 - o Land Fund is used to purchase land when available. Funds are not available to use for activities.
 - Bi-annual budget review will be scheduled.
 - **Motion** was made to to approve the 2023-24 budget. **The motion was seconded and passed unanimously.**
- 10 prospective members introduced themselves.
- 4 new members were inducted.
- John Novak, Ponds and Streams co-Chair, reported that trout will be stocked in the small pond. Plan is to stock 200 (100 rainbow, 100 brown). Fishing trout is available for members and family only.
- Blaine Elkins met with Land Preservation and Soil Conversation District to discuss the easement and steps going forward.

(continued on page 3)

SUMMARY

(continued from page 2)

- National IWLA – Bill Gordon reported that the National Convention will be held July 14-17, 2024 in Cambridge, MD at the Hyatt Regency.

TALKS FOR THE GOOD OF THE CHAPTER

- Shotgun Range is key to increasing membership.

Meeting adjourned around 8:30pm.

Adopt-A-Road Cleanup Schedule

The B-CC IWLA Adopt-A-Road team will tentatively meet at the Chapter House at 8:15am for cleanup on the following date:

- Saturday, December 9

Point of contact for Adopt-A-Road is John Robinson, 301 641-1188.



**November 2023
1,057th Monthly Dinner /
Membership Meeting**

Wednesday, November 15

**Dinner served starting at 6:15pm
Membership Meeting starts at 7:30pm**

Menu
Appetizers will be available before dinner
Dinner menu to be determined

**November 2023
Board of Governors Meeting**

Wednesday, November 15
**(Immediately following the November
Membership Meeting)**

ATTENTION New Members!
*Chapter House cleanup this month will be on:
Sunday, November 12
Starting at 9:00am*

Join us and earn volunteer hours

***As a reminder – probationary (new) members
need to help out in one chapter house clean-
up as part of their sixteen volunteer hours.***

REMEMBER...
Guest hunters **are not** permitted
at B-CC IWLA.



Christmas Trees

Christmas trees are available to chapter members. Trees are \$30 each, payable to either members of the BOG or mailed to the treasurer at the chapter's PO Box (B-CC IWLA, PO Box 542, Poolesville, MD 20837).

Trees are "cut your own" and are in the field on the left along the drive towards the shotgun range. Many trees are already pre-decorated with items like bird nests and mantis cases, no extra charge. There are many small trees planted by our members during workdays, which may not be easily visible, so please step carefully around in the rows of our future crop.

Some of the trees may be "tagged" by members that wish to trim them to their specifications. Please respect the tags and choose another tree. Also, leave stumps either tall enough to be easily visible or cut them flush to the ground. Hidden stumps wreak havoc on the mowing efforts. Trimmed branches should be placed in the woods at the bottom of the hill.

Any questions, contact Larry Anderson, 240 246-5302, or andupton9@hotmail.com.



Help is Needed! Environmental Stewardship Committee

On a monthly basis, our Chapter has a Maryland certified lab take scheduled samples of the surface and potable water on our property. In addition to ensuring safe drinking water, these results allow us to monitor the impact of development outside our property, the containment of lead on our ranges, and the quality of our streams and ponds for aquatic life. The Chapter member who has been escorting the lab technician to the designated sites for the past 20 years is retiring from this duty at the end of the year and we are looking for one or more member(s) to take over this important work. The process takes a couple of hours once a month on a weekday.

If you are willing to help, please contact Blaine Elkins at blaineelkins@verizon.net.

CMP/NRA Format Hi-Power Rifle Match

There will be a CMP/NRA format Hi-Power Rifle Match at the R&P Range on Saturday, November 18.

The match will consist of 2 or 3 relays of up to 9 shooters per relay and the course of fire will consist of: 10rd. prone/slow fire, 10rd. standing/slow, 10rd. sitting/rapid fire, and 10rd. prone/rapid. The match is open to AR style, M-1A, and Garand rifles.

If you are interested or have questions, please contact Jerry Murray at jerrym5@comcast.net or 202 438-4202.

Membership Committee Report

Scott Harmon, Membership Secretary
scott.w.harmon@verizon.net 301 467-0645 (Cell)

As of the October Board Meeting membership stands at 796 total Members: 433 Individuals, 264 Family, 6 Students, 1 Youth, 76 Retired, and 14 Associates.

All renewal notices have been mailed and renewals are coming in. About a quarter of our members have already renewed. By renewing early, you help the chapter continue operating the farm and ranges during the fall months. There are three ways to renew.

1. By mail
2. In person at a dinner meeting
3. Online

Please choose the method that works best for you but also helps the chapter the most. To renew online copy and paste the following link into your web browser: <https://bcciwla.org/memberrenew>. You can also go to our website home page and in the upper right corner of the page hover over the drop down menu called "Member Area". At the bottom of this menu you will see Renew your Membership, click on it to renew your membership.

Work hours may be added to our database online as well. On the main website page go to Member Area and from the drop down menu click on Log Your Volunteer Hours. No worries if you have not worked 6 hours yet there is still time to get those hours in.

Lastly, it's important to increase our membership during the coming year and the best way to do this is by inviting someone to a dinner meeting. Hope to see you and lots of new faces at the November dinner meeting.

Editor's note...

Thanks to the Ponds & Streams Committee approximately 100 brown and 100 rainbow Trout have been stocked in the small pond for fishing by the membership. Please see the rules below. Enjoy!



Small Pond Trout Fishing

1. Trout fishing began at sunrise on Sunday, November 5.
2. Trout fishing is for chapter members and immediate family only.
3. Anglers 16 and older must have a Maryland fishing license and a \$5.00 trout stamp. Those aged 65 and older qualify for a senior consolidated fishing license; no trout stamp is required.
4. Fish from the shore only; do not use the boat.
5. Anglers may keep 3 trout – no size limit.
6. Anglers may use only one fishing rod at a time.
7. Anglers should park in the chapter house parking lot.
8. Pick up and take all trash out of the small pond area when leaving.
9. Report the number and species caught to:
John Novak, novakgang4@comcast.net, 301/385-0943 or
Peter Wirth, Peter_Wirth@verizon.net, 301/915-6763

UPCOMING EVENTS

B-CC IWLA and Community

**Check the Chapter website for updates!
All dates are tentative and subject to change.**

Chapter House Cleanup

Sunday, November 12
9:00am – 12:00 noon

1,057th Membership Dinner Meeting

Wednesday, November 15
Dinner – 6:15pm; Meeting – 7:30pm

Board of Governors Meeting

Wednesday, November 15
Immediately following the Membership Meeting

New-Member Orientation Tour

Saturday, November 18
10:00am – 11:30am

Sporting Clays at the Shotgun Range

Sunday, November 19
9:00am – 4:00pm

Annual Holiday Party

Saturday, December 9
Starting at 6:00pm

Welcome to the B-CC IWLA Family!

At the October 2023 Membership Meeting, the following were inducted into the Chapter:

Lance Brannman

Interests: Archery; Campground; Family Picnic

Richard Farino

Interests: Ponds & Streams; Wildlife; Youth Programs

Tom Sullivan

Interests: Fishing; Hunting; Wildlife

Dex Underwood

Interests: Archery; Fishing; Gun Ranges

HELP NEEDED IN THE KITCHEN -

Membership Dinner Meetings

We are still in need of additional cooks for our dinner meetings. If you can help out in any way, either short or long term, please get in touch with Carol Hulce-Efdimis. The help does not have to be a long-term commitment, even cooking or helping for one dinner would be appreciated.

CALENDAR OF EVENTS

All dates are tentative and subject to change. Check the website for updates.

Monthly Events

Saturdays & Sundays (starting in November)
Mondays

FeederWatch Program
BSA Scout Meetings in the Chapter House

See SignUp Genius
7:30pm – 9:00pm

NOVEMBER

Saturday, November 4	Summer Biathlon Practice at the R&P Range	7:30am
Saturday, November 4	Adventure Committee Workshop – in the Chapter House; includes lunch Reducing Body Visibility – Becoming One with the Woods	9:00am – 1:00pm
Sunday, November 5	Trout Fishing at Small Pond Begins – Open to Membership – Fishing License Required	All Day
Saturday, November 11	Summer Biathlon Practice at the R&P Range	7:30am
Sunday, November 12	Chapter House Cleanup	9:00am – 12:00 noon
Wednesday, November 15	1,057th Membership Dinner Meeting – Butch Mezick & Bob Cissel (Speakers)	Dinner starts 6:15pm Meeting starts 7:30pm
Wednesday, November 15	Board of Governors Meeting	Following Dinner Meeting
Thursday, November 16	Interpretive Walk in the Woods – with PHS Ecology Class	8:00am – 3:00pm
Friday, November 17	Interpretive Walk in the Woods – with PHS Ecology Class	8:00am – 3:00pm
Saturday, November 18	RO Day at Shotgun Range (RO's only)	9:00am – 2:00pm
Saturday, November 18	New-Member Orientation Tour	10:00am – 11:30am
Saturday, November 18	Eagle Scout Court of Honor & Reception – Chapter House and Fire Ring	3:00pm – 9:00pm
Sunday, November 19	Shotgun Range Reopens for Sporting Clays	9:00am – 4:00pm
Sunday, November 19	NRA Range Officer Safety Course – in the Chapter House	9:00am – 6:00pm
Friday, November 24	Articles for Decembers Newsletter due – send articles to j.lamkin@comcast.net	By End of Day
Saturday, November 25	R&P Range Closed – Straight-Wall Cartridge/Shotgun Season	Closed All Day
Sunday, November 26	R&P Range Closed – Straight-Wall Cartridge/Shotgun Season	Closed All Day
Sunday, November 26	Deer Firearms Season	Hunting only until 10:30am

DECEMBER

Saturday, December 2	Chapter House Holiday Decorating	9:00am – 5:00pm
Sunday, December 3	Deer Firearms Season	Hunting only until 10:30am
Saturday, December 9	Adopt-A-Road Cleanup	8:15am – 12:00 noon
Saturday, December 9	Chapter Holiday Party – pot luck appetizer / dinner / desserts	6:00pm – 11:00pm
Saturday, December 16	Chapter House Cleanup	9:00am – 12:00 noon
Saturday, December 16	New-Member Orientation Tour	10:00am – 11:30am
Sunday, December 17	Montgomery Bird Club's Christmas Bird Count	7:00am – 12:00noon
Wednesday, December 20	1,058th Membership Dinner Meeting	Dinner starts 6:15pm Meeting starts 7:30pm
Wednesday, December 20	Board of Governors Meeting	Following Dinner Meeting
Friday, December 22	Articles for January Newsletter due – send articles to j.lamkin@comcast.net	By End of Day

JANUARY 2024

Saturday, January 6	ARSA Search & Rescue – Intro to Mantrailing – Chapter House and Grounds	8:00am – 4:00pm
Sunday, January 7	ARSA Search & Rescue – Intro to Mantrailing – Chapter House and Grounds	8:00am – 4:00pm
Saturday, January 13	Chapter House Cleanup	9:00am – 12:00 noon
Wednesday, January 17	1,059th Membership Dinner Meeting	Dinner starts 6:15pm Meeting starts 7:30pm
Saturday, January 20	New-Member Orientation Tour	10:00am – 11:30am
Wednesday, January 24	Board of Governors Meeting	7:00pm
Friday, January 26	Articles for February Newsletter due – send articles to j.lamkin@comcast.net	By End of Day

FEBRUARY

Saturday, Feb. 17	Chapter House Cleanup	9:00am - 12:00 noon
Wednesday, Feb. 21	1,060th Membership Dinner Meeting	Dinner starts 6:15 Meeting starts 7:30pm
Saturday, Feb. 24	New-Member Orientation Tour	10:00am – 11:30am
Saturday, Feb. 24	Cub Scout Pack 694 Blue and Gold Dinner	5:00pm – 9:00pm
Wednesday, Feb. 28	Board of Governors Meeting	7:00pm
Friday, March 1	Articles for March Newsletter due – send articles to j.lamkin@comcast.net	By End of Day

The Campground is closed during all black powder and firearms deer season.

2023-2024 FeederWatch Season

Diane Seward
Citizen-Science Projects Coordinator
trina65@verizon.net

The feeders have been stocked, the overwintering birds are here, and our 13th FeederWatch season is underway! Counting birds is both enjoyable and educational. Please consider joining other chapter members who count species and numbers of birds observed within species on weekends from early November through late March.

Our data is reported to Cornell University's Lab of Ornithology, along with data submitted from thousands of other participants across the country. Our data helps Cornell scientists analyze shifts in bird species and numbers within species in the United States and Canada. Next Spring the Cornell Lab will publish results by geographic area. Maryland falls in the Lab's southeast region.

We welcome and seek new participants. Please email me if you can help. I will send you our tally sheet and instructions. Count birds for at least an hour on two successive days, or on one day if you are pressed for time, from the comfort of the chapter house. Reserve a weekend, or a single weekend day, using our Signup Genius. Here is the link:

<https://www.signupgenius.com/go/10C0D4DACA28A7F8C25-bcc#/>

Happy Feeder Watching!

Log Cabin Committee Report

David Mecklenburg, Chair

The Chapter workday was especially gratifying this year. It started as a rainy day which allowed us to make some minor repairs on the inside of the cabin, mostly blocking new holes to keep as many of the critters out as possible. The squirrels and raccoons seem to be the most destructive. After the rain stopped and the sun came out, we hung the new springhouse door. I would like to thank everyone who participated.

Come on down to the cabin when you are here and check it out. While you are visiting the spring house notice that it is dry and has been since May. In all the years that I have been coming to the chapter this is the longest time I remember the spring house being dry.



The inside of the spring house door.



The outside of the spring house with the new door – David Mecklenburg and Duane Schmidt.

Results of Cicada Research Conducted at B-CC IWL Published in Science!

John T. Lill
Professor of Biology, George Washington University
lillj@gwu.edu

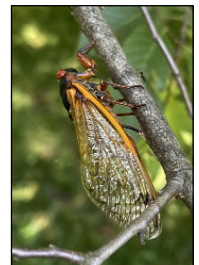
Martha R. Weiss
Professor of Biology, Georgetown University
weissm@georgetown.edu



John Lill and Martha Weiss

A collaborative team of ecologists from three local universities, Georgetown University, George Washington University, and the University of Maryland, recently published the results of a four-year study investigating how the Brood X cicada pulse impacted ecological interactions and the flow of energy through forest food webs. During the emergence, the team found that local birds dramatically altered their diets to feast upon the abundant cicadas, and this diet shift was observed in more than 80 species of birds. Local birders from around the region contributed additional records of cicada-feeding to bolster the dataset.

Beginning in the spring of 2020 (the year prior to the Brood X emergence), the researchers measured the weekly intensity of bird predation on 80 'fake' caterpillars made of green modeling clay that they attached to understory white oak trees in the forest near the Scout Camp. They documented consistently high levels of attack: between one-quarter and one-third of all the clay models had beak marks each week. However, when the team repeated the same protocol in 2021, the number of clay caterpillars with beak marks dropped precipitously once the cicada nymphs began crawling out of the ground in the spring, and remained low until the last adult cicadas were heard calling, on the 4th of July. Once the cicada bonanza was over, the birds switched back to feeding on caterpillars, as evidenced by the increase in attacks on clay models during July and August. The team also recorded the abundance of real caterpillars on white oak trees during the summer of the emergence and for the following two summers; they found that there were twice as many caterpillars during the 2021 emergence year compared



Female Cicada depositing eggs



Clay caterpillar with bird beak marks



Grackle eating a Cicada

to the next two non-emergence years (2022-2023). The doubling of caterpillar numbers also resulted in a doubling of leaf damage on the oak trees. The team found a similar result at a second field site in Anne Arundel County, suggesting that the avian diet shift and resulting alterations to the forest food web first documented at B-CC IWL are likely to be widespread. The paper was published in the October 20, 2023 edition of *Science* magazine and featured on the cover. *Science* magazine is one of the most impactful scientific journals in the world, so the team was thrilled about the publication, which has attracted significant media attention since appearing in print. Free access to the paper can be found on Dr. Lill's website (<https://biology.columbian.gwu.edu/john-lill>) under the Publications tab. We are grateful to B-CC IWL for granting us access to their beautiful forest site, which was ideally suited for our study.

B-CC IWLA GUN RAFFLE

The Chapter is selling tickets for a Gun Raffle to help raise funds for Chapter projects. Tickets will be available at the October, November, and December Dinner/Membership Meetings, at Chapter events, etc. If you would like to purchase a ticket or are able to help sell the tickets, contact Andy Wight at ConservationEd.BCC.IWLA@gmail.com.

The price per ticket is \$20 — cash or check (made payable to B-CC IWLA)

999 tickets will be available.

There are five guns (or cash options) that will be available to win.

Winners will be decided by the **Maryland Evening Pick 3** on December 26, 27, 28, 29, and 30. For example, if the number on your ticket is 234 and the Evening Pick 3 number is 234 on December 26, you win the prize indicated for that day. You also have the option of taking the cash offer for the day instead of the gun. Your purchased ticket will be available for the drawings on all five dates.

Don't know what to give that person who has everything as a holiday gift or birthday present? Raffle tickets are the perfect gift for those hard to buy for big boys and girls.

****As an incentive for members to help sell tickets, we are offering a \$100 Visa Gift Card per each winning ticket raffled. Ticket sellers must provide their contact info in the space provided on the ticket.****



List of guns to be raffled or cash options by date are listed below:

Five Drawings:

December 26

Browning BPS 12 gauge Walnut/Blue or \$450

December 27

Ruger American .22LR Walnut/Stainless Steel or \$275

December 28

Bergara B 14 6.5 Creedmoor Walnut/Blue or \$500

December 29

CAV Scout .450 Bushmaster Camo/Sniper Gray or \$300

December 30

Henry Big Boy "Brass" 38-55 Win. Walnut/Blue (Straight Case Round) or \$600

- Daily winner determined by **MD Evening Pick 3** Straight Lottery number. Winner will be notified by phone or email (need email address).
- **Firearms provided by Stateline Gun Exchange.** Winners must contact **Stateline Gun Exchange** to claim prize. Must be picked up in 45 days after date of drawing.

Ponds & Streams Fall Cleanup

John Novak, Committee co-Chair
novakgang4@comcast.net

Fall cleanup day, October 7th, was cloudy with intermittent rain showers in the morning, but members of the Ponds & Streams Committee persevered and completed several projects. These included removing the turtle sunning platforms from both ponds, placing 40 pounds of fish food pellets in the small pond fish feeder and 80 pounds in the big pond feeder, setting traps in both ponds to determine the occurrence of bluegill spawning, and clearing woody debris blocking the culvert entrance at the first crossing on Izaak Walton Way. Clearing the woody debris from the culvert entrance was a difficult and dirty task taking over two hours to complete (see before and after photos). Not only was the culvert entrance blocked but willow saplings had sprouted covering the upstream area of the

BEFORE



AFTER



PHOTOS BY PATRICK LEE AND PETE WIRTH

entrance. Results of the fish trapping revealed spawning of bluegills in the big pond had occurred with over 50 fry captured in two traps. For the small pond traps only four fry were caught. Predation by largemouth bass may be a factor in this low number of bluegill fry captured. Previous electrofishing of the small pond determined that a number of largemouth bass should be removed. Many thanks to Frank Parker, Pete Wirth, Patrick Lee, John Estep, Jack Caulfield, Suzanne Novak, and Shannon Novak for their help in completing these projects.

Wildlife Committee Report

Larry Anderson, Chair
240 246-5302 andupton9@hotmail.com

Deer firearms (shotgun) season starts on November 25 and runs through December 9, including Sunday, November 26 and Sunday, December 3 (only until 10:30am). We ask that all hunters be safe and courteous, read and follow our rules, and respect all property lines. B-CC IWLA chapter website has our updated rules and a variety of methods to distinguish our property lines. The Chapter's Trail Guide on the website is a good way to familiarize yourself with the trails and the boundaries of our Conservation Farm. All members intending to hunt on our farm must acknowledge that they have read our rules and understand where our property lines are by registering on our website. This is a yearly requirement. It is recommended that during the deer firearms, all members and guests while out on the farm wear some highly visible clothing, hunter orange or pink is preferred.

We do not have permission to hunt or go on any of our neighbor's properties. In the event that you need to track and recover a deer that makes it off our farm, members need to get permission before entering our neighbor's property. The property located to the north and west of our farm (near the big pond) on several different boundaries is owned by **Joe Morin** (301-674-5397), the property located north of the NE Woods is owned by **Vikki Van Winkle** (301-379-3560), and the property across Willard Road from the NE woods is owned/managed by **Bob Cissel** (301-775-8978). Members may enter their property only after calling them and receiving permission. You must not enter their properties with a weapon of any kind.

Our farm is considered private property (MD-DNR land code 430 for harvest check in), so your current valid membership card is used as the written permission to hunt as required by MD DNR and must be carried along with your valid hunting license. Also, a current B-CC IWLA chapter vehicle decal must be visible in all vehicles on the farm.

We ask that deer and turkeys taken on our farm be recorded either in our game logbook, located outside the chapter house's main door; or by sending an email to andupton9@hotmail.com. When reporting your deer (or turkeys), we ask for the following information; your name, doe or buck (antler count), date and weapon used, and the total number of ticks found on the ears of your deer. Other details may also be included such as estimated weight or unusual features. Thus far, 5 deer have been reported during archery season and only 1 deer has been reported during the early muzzleloader season. If you have taken a deer during this season, there is still time, please let us know.

Our hunting rules, as posted on our website, have been instituted to accommodate the large number of hunters we potentially have in our chapter. The intent and spirit of these rules is to ensure access to all hunters. Leaving blinds, stands and any other hunting equipment in the woods and fields overnight with the intent to hunt multiple days constitutes a sense of ownership to a spot and limits access to fellow hunters. As such, this constitutes a violation to the spirit of our rules. The wording of our rules against leaving hunting equipment overnight has been modified to reflect the use of groundblinds and now includes a prohibition of leaving groundblinds out overnight. Groundblinds, in addition to tree stands, left overnight will be subject to removal and surrendered to the BOG.

Baiting for hunting purposes is prohibited on our farm.

Maryland DNR allows weapons that use straight-walled cartridges to be used to hunt deer in regions previously restricted to shotguns. An amendment has been made to our

chapter rule that will also allow the use of straight-walled cartridge firearms to hunt deer during deer firearm season on our farm. Only those cartridges that meet the minimum standards set by MD DNR will be allowed and only for use during deer firearm season and for deer hunting only.

Again this year, 2 bucks may be taken statewide throughout the entire hunting year, only one of which can have less than 3 points on an antler. Only one buck may be taken in a weapon year. A bonus buck may be taken in region B (our region) after purchasing a bonus buck stamp and can be used for any weapon season, still maintaining the antler point restrictions. The requirement to harvest 2 does prior to using the bonus buck stamp has been removed.

Bears are protected in Montgomery County and we adhere to the policies setup by MD DNR. We ask that all of our members be aware of the possibility of encountering a bear does exist while on our farm. If anyone catches a picture of a bear (or other novel wildlife) from the farm, please forward to the wildlife committee.

Catch a Poacher 24 Hour Hotline: 1-800-635-6124

Citizens who supply Maryland Natural Resources Police with information leading to the arrest and conviction of a poaching violator are eligible to receive cash rewards. Give names, addresses, vehicle descriptions, and as much information as possible. The anonymity of the caller is guaranteed.

To report nuisance, injured, or sick wildlife
(Monday – Friday, 8:00am – 4:30pm)
Call Toll-free in Maryland: 1-877-463-6497

Friendly Reminder:

All chapter members wishing to hunt on our farm **must**:

- 1) Have a valid MD hunting license (including all necessary stamps, i.e. HIP stamp for doves)
- 2) Have a current and valid B-CC IWLA membership card as proof of permission to hunt on private land
- 3) Have a current and valid parking sticker displayed on their vehicle
- 4) Register on our website to acknowledge understanding our rules and property boundaries. This is a yearly requirement.

DUE DATE

for December Newsletter Articles is
Friday, November 24

Submit articles to: j.lamkin@comcast.net
If the article contains photos, please submit
them as separate jpg files and
include a caption and photo credit.

*Please submit your articles on time –
after the due date, we only have one week to
ask questions and edit the articles before
proceeding to the layout stage.*

Driving on Chapter Property

Privately owned vehicles are to remain on the main Chapter roads at all times. They are **NOT** allowed to drive through the fields or park in open areas. This includes no vehicle traffic to the back pond or in the fields unless the vehicle is in use in conjunction with a project being overseen by a Chairman or Committee.

Rifle & Pistol Committee Report

Gus Zinsser, Chair
240 750-0979 guszinsser4@gmail.com

Matthew Chambers, Chief Range Officer
202 854-8671 matthewschambers@gmail.com

The last day for the R&P Range to be open to the general membership is Friday, November 24. It will reopen in March 2024 (dates TBD). Range Officers and their guests can use the range unless otherwise closed to all.

The Range moved to Winter Hours. It is now open 9:00am to 4:00pm until mid March.

CLOSURE:

Range will be closed all day on Saturday, November 25 and Sunday, November 26 for Straight-Wall Cartridge/Shotgun Season.

REMINDER:

The Standard Operating Procedures (SOP's) for the range have changed. Please review the SOP's before coming to the range to re-familiarize yourself and guests with the firearms transporting and safety procedures for our range. This will help you and our range officers to maintain a safe environment.

PLEASE REMEMBER:

- Put paper in the trash. If the cans are full, please empty them.
- Keep watch on guests you bring. It is your place to brief them on the SOP's.

- Be safe and enjoy the range respectfully.
- All must **PICK UP THEIR BRASS!**

RANGE OFFICER SCHEDULE:

NOVEMBER

Saturday, November 4	White, M.; Sypes, E; Leahy M.
Sunday, November 5	Pedersen, P; Mense, M.; Spears, S.; Deegan, J.
Saturday, November 11	Johnson, G.; Fainbraun, S.; Leahy, M.
Sunday, November 12	Lowe, C.; Bryan, K.; Ossi, G.; Chung, K.
Saturday, November 18	Richards, M.; White, M.; Kim, D.; Drummond, R.; Epstein, G.
Sunday, November 19	Princiotto, M.; Richards, M.; Kim, D.; Kipfer, J.
Friday, November 24	Bixler, D.; Deegan, J.; Fainbraun, S.

Shotgun Range Committee Report

Warner Parks, Chair
240 620-6942 wparks29@gmail.com

The Shotgun Range has set the date to resume operations on Sunday, November 19 on a limited field. We will be running a full field of Sporting Clays. There will be NO Trap and Skeet, 5 Stand, or Wobble Trap due to issues with shotfall in the stream and wetland buffer zones.

Open hours to the membership will follow the Winter Hours schedule of 9:00am – 4:00pm.

On Saturday, November 18, there will be an RO day from 9:00am – 2:00pm on the range to acclimate the ROs to the new layout and rules.

B-CC IWLA CHRISTMAS SPORTSMAN GUN RAFFLE

Only 999 Tickets Sold

Firearms provided by Stateline Gun Exchange



Five Drawings:

December 26 – Browning BPS 12 gauge Walnut/Blue or \$450

December 27 – Ruger American .22LR Walnut/Stainless Steel or \$275

December 28 – Bergara B 14 6.5 Creedmoor Walnut/Blue or \$500

December 29 – CAV Scout .450 Bushmaster Camo/Sniper Gray or \$300

December 30 – Henry Big Boy "Brass" 38-55 Win. Walnut/Blue (Straight Case Round) or \$600

- Daily winner determined by MD Evening Pick 3 Straight Lottery number. Winner will be notified by phone or email (remember to add contact info on ticket stub).
- Your purchased ticket(s) will be available for the drawings on all five dates.
- Winner must contact Stateline Gun Exchange to claim prize. Must be picked up in 45 days after date of drawing.
- If you would like to purchase a ticket or are able to help sell tickets, contact: Andy Wight at ConservationEd.BCC.IWLA@gmail.com

**50/50
Raffle**
Help Support
the Chapter!

**Raffle tickets will be available
at the monthly dinner meeting**

\$1 per ticket or 6 tickets for \$5

50% goes to the ticket holder –
50% goes to the Chapter to help
purchase new Adirondack chairs
for the Chapter House porches

Our goal is to purchase 15 chairs



Land Fund Chairman Byron "Butch" Mezick

B-CC IWLA LAND FUND

Please Contribute to the 2023 B-CC IWLA Land Fund

The B-CC IWLA Land Fund began in 1994 to raise the required funds to purchase 127 acres of woodland on our western border known as the West Woods. Since its inception, the Land Fund has raised over 1,000,000 dollars from past and current members' contributions for the sole purpose of purchasing properties adjacent to our conservation farm. So, yes, our chapter has increased the size of the 366-acre farm it bought in 1949 to its present 624 acres.

All funds donated to the B-CC IWLA Land Fund are used solely for land purchase as articulated by the chapter's bylaws. Further, land fund contributions are tax-deductible and 100% efficient, meaning every dollar goes for its intended purpose.

Nation-wide the overwhelming reason IWLA chapters lose their shooting ranges and hunting opportunities is the encroachment of residential and commercial development. Individually we can't stop the advancement of development towards our present boundaries, but collectively we can, and we have. So yes, by coming together as a membership, we will preserve the opportunity for present and future generations to enjoy our lifestyle and chosen value system.

From shooting ranges to bird identification to understanding wildlife, woodlands, and open spaces, to hiking, gardening, fishing, and conservation education, we will inspire and motivate one another, our families, and friends.

Please contribute by using our website, BCCIWLA.org, donate with your membership renewal, or mail a check to B-CC IWLA, PO Box 542, Poolesville, MD 20837. In the memo section of your check, write B-CC IWLA Land Fund.

2023 Land Fund

As a member of the B-CC IWLA, I want to do my part and contribute the following amount to the B-CC IWLA Land Fund Campaign.

Name _____

Address _____

City _____ State _____ Zip _____

_____ **\$50** _____ **\$100** _____ **\$200** _____ **\$500** _____ **\$1000** _____ **OTHER**

Your contribution is tax deductible.

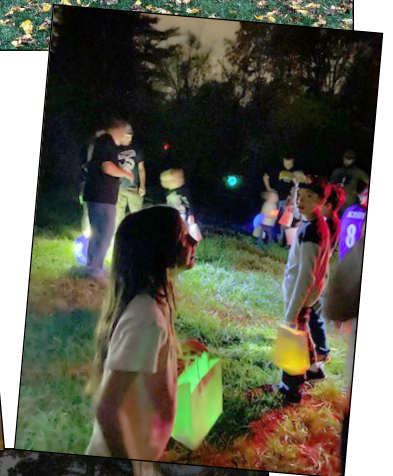
Please mail contribution form and check (made payable to B-CC IWLA) to B-CC IWLA, PO Box 542, Poolesville, MD 20837 or donate via paypal on the Chapter's website, www.bcciwla.org.

Family Campout Update

It's the time of year for the Fall Family Campout, and this year the weather did not fail us. Clear skies and warm weather provided the perfect start to the campout. With gates opening at 3:00pm, adults and kids alike, took the opportunity to fish in the small pond under the watchful eye of the Ponds and Stream Committee, while the tents were pitched outside the Chapter House. With a Pumpkin Patch, Halloween crafts, and lots of paint, the kids had an enjoyable afternoon before settling down for our traditional dinner of hotdogs, burgers, cookies, and unlimited juice boxes.

As it got dark, and the stars came out, we walked down to the big pond. The cathedral of pines, which were colorfully lit, and our journey was watched by eyeballs in the forest. A gaggle of witches guarded the pond, but our young members bravely found and devoured the bags of candy scattered around. A trip to the Log Cabin awaited, with a graveyard, spiders, bones, mysterious candles, and things that go bump in the night. Our families bravely entered the haunted house, overcame any fears, and successfully escaped the cabin cellar. As the members finally began to crash, smore's around the campfire rounded things off for the evening. A small rain shower through the night and a breakfast of eggs, bacon, sausage, waffles, tater tots, and coffee brought the 2023 Fall Family Camp Out to its close.

A huge thank you to everyone who attended and volunteered over the two days including the **Ponds & Stream Committee** and **Log Cabin Committee** and a big call out to **Emma Cowan** for the arts and crafts, and to **Travis Vaught**, **Meredith Vaught** and **Alexendra Wight** for setting up the Haunted House and Halloween scavenger hunt.



PHOTOS BY EMMA STEVENSON, TRAVIS VAUGHT, AND ANDY WIGHT



Kids' Fishing – Fall Campout

John Novak, novakgang4@comcast.net

Summer like temperatures and beautiful weather brought out families for the kids fishing event at the small pond on Saturday, October 28. About a dozen kids of all ages took part and all caught fish, mostly bluegills, but a few small large-mouth bass were also reeled in. It was the first-time fishing experience for many of the kids, but it did not take them long to learn how to bait the hook and cast the line. The fall leaves provided a colorful backdrop to the event along with the nearby "haunted" cabin decorated for Halloween. Later kids could be heard exchanging fish stories over grilled hamburgers, hot dogs, and s'mores. All in all, it was a fun-filled day. Many thanks to Pete Wirth, Vic Ezerski, Guy Weigold, and Suzanne Novak for their help.

PHOTOS BY SUZANNE NOVAK AND TRAVIS VAUGHT

