



## OCTOBER 2018 NEWSLETTER

# The Bethesda-Chevy Chase Chapter of The Izaak Walton League of America

Serving the Community Since 1935

PO Box 542, Poolesville, MD 20837

[www.bcciwla.org](http://www.bcciwla.org)

## President's Message

All,

For years, we have been asked to participate in our annual Land Fund drive; I'd like to suggest that this year is different from others and might be the most important ever.

Elected officials in Virginia are currently pushing hard to add a river crossing that would involve development on our property. Thanks, to Butch Mezick, Jim O'Conner and many others, our officers have been ahead of the curve in planning for this possibility, and we have been working to lay the groundwork to stave off this awful idea.

In fact, the very reason we are confident that we can successfully fight this is that we have not only grown our farm to about 625 acres, but we have reforested and placed many conservation easements that will make it exceedingly difficult for any government body to poach our land. The larger our stake, and the more easements we introduce, the more impediments we put in the way of the bulldozers.

Now, more than ever, all of our aid is critical.

Every penny of your donation is used towards the purchase of land to grow our farm. Your donation is tax deductible, and your contribution, no matter the dollar figure, links you with all of those who have not just given their hard earned money, but their time, in working to be at the ready when opportunities arise.

Let's join together and fight.

See you on the Farm.

Jack Mandel, President B-CC IWLA

## - NOTICE - CHAPTER HOUSE FRONT DOOR

The front door to the chapter house is acting a little finicky. Please push the door in first if it appears to not unlock with your card.

## UPCOMING EVENTS

for B-CC IWLA and Community

### Summer Biathlon Practice

Saturday, October 13  
7:30am

### Fall Family Campout

Saturday, October 20 – 3:00pm  
until Sunday, October 21 – 10:00am

### Winter Sporting Clays League at B-CC IWLA

Sundays – October 21, November 18,  
and December 9  
*(note date change for December)*  
9:00am – 1:00pm (final signup)

### Shotgun Range Officer Training Class

Saturday, October 27  
9:00am

### FeederWatch Orientation Meeting

Saturday, November 10  
10:00am

### Decorating the Chapter House for the Holidays

Saturday, December 1  
10:00am – 12:00 noon

### Chapter Holiday Party

Saturday, December 8  
7:00pm

## NEWSLETTER DEADLINE

Please submit all articles for the November 2018 newsletter **NO LATER THAN FRIDAY, OCTOBER 26.**

## Board of Governors

Fiscal Year: September 1, 2018 – August 31, 2019

### OFFICERS

**Jack Mandel, President**

202 487-8440 • jmandeldesign@gmail.com

**Jeff Seaman, 1st Vice President**

301 775-4973 • jeff\_seaman@hotmail.com

**Ron Marchessault, 2nd Vice President**

202 320-3834 • rmarche12@comcast.net

**Tucker Mostrom, Membership Secretary**

301 252-8825 • MembershipSecretary.BCC.IWLA@gmail.com

**Billy Sherrill, Treasurer**

240 418-6848 • billo3131@gmail.com

**Janet Lamkin, Corresponding Secretary**

301 466-6557 • j.lamkin@comcast.net

**Mark Gochnour, Recording Secretary**

301 642-3565 • mgdonutman@gmail.com

### BOARD MEMBERS

**Walt Allensworth**

301 221-3594 • twangermd@gmail.com

**Shannon Novak**

301 785-8461 • snovak516@gmail.com

**Christine Peterson**

301 938-9773 • christineakcp@comcast.net

**Jack Shaw**

301 340-1624 • jshaw110@verizon.net

**Joe Snider**

240 876-4917 • joesnider2006@gmail.com

**Jim Tate, Past President**

202 841-2056 • jim@tate-tate.us

\* Indicates Officers and Board Members who were absent from the previous month's Board of Governors meeting.

The Izaak Walton League of America – a non-profit conservation organization – is recognized as a Section 501(c)(3) public charity under the Internal Revenue Code.

Address, phone and email changes should be sent to the Membership Secretary at the above address.

Submissions to the *NEWSLETTER* should be sent to:

Janet Lamkin  
j.lamkin@comcast.net or  
Newsletter.BCC.IWLA@gmail.com  
301 466-6557



## Summary of the September 2018 Dinner Meeting and Board of Governors Meeting

Mark Gochnour, Recording Secretary  
301- 642-3565 mgdonutman@gmail.com

### September 19, 2018 Dinner Meeting

- The 996th Annual Meeting on September 19 was called to order at 7:30pm and adjourned at 8:45pm.
- President Jack Mandel acknowledged the dedicated and hardworking volunteers who give so much of their time and how proud he is of the organization. He highlighted Andy Wight for his idea for Family Night, which was very successful bringing in the most attendees in multiple years; Janet Lamkin's behind the scene work for years on the newsletter; Larry Anderson and Phil Taylor's farm work resulting in a successful Dove Shoot; Hunter Safety Course and all of the volunteers and participants who were rained upon, and Warner Parks' faithful work at the Shotgun Range.
- Two Guest Speakers – Don Perino, Archeology Committee Chair provided a fascinating backwards-historical chronology of the B-CC IWLA property. Anyone finding artifacts are urged to take pictures at the site for a GPS reference and then turn it in. Andy Wight, Conservation Education Committee Chair shared highlights of the past year and let the audience know of the plans for the rest of 2018 and first half of 2019 that include the fall Family Camp Out on October 20. Three activities – Heritage Day, Poolesville Day and work with the Poolesville High School's Global Ecology Program help promote the Chapter to the public. The Conservation Dinner is planned for late January and any suggestions for a speaker would be welcomed.
- The Chapter's membership exceeded 1,000 with the induction of seven (7) members on that night.
- Larry Anderson reported a photo was taken of a bear near the large pond and in answer to a question, that the Chapter does not have restrictions on members using game cameras on the property.
- Newsletter contributions need to be sent to Janet Lamkin as Word Documents and photos should be sent separately.

### August 22, 2018 Board of Governors Meeting

- Chapter 1st Vice President Jack Mandel called the meeting to order at 7:30pm.
- All Chapter Officers, the Past President, and Board members were present.
- The Chapter president gave his report and opening remarks, including:
  - o Lonnie Coates from Security (CSI) discussed additional security measures to be implemented. Security cameras at gate, at equipment barn, motion light at gate. Discussed security measures at R&P range. Discussed possible connections/lines (phone line, broadband, radio, etc.). Local Fire Dept. is well set up to assist with any services needed at the Chapter.
  - o Advance Planning & Finance meeting – Sunday, August 26 at 10:00am.
  - o Grant Request – presented findings from researching the Potomac River bridge proposal and presented a draft cover letter for the funds request from Legacy.
  - o Budget review Sunday – August 26 at 11:00am.
- Chapter Treasurer (Bill Sherrill) presented his report on the chapters accounts and finances.

(continued on page 3)

## SUMMARY

(continued from page 2)

- (Joe Snider) gave the following report on the Forest Mitigation Bank program
  - Funds have come into the chapter and more will be coming in within the next 30 days. Will shortly begin selling reforestation credits.
- Membership Secretary (Tucker Mostrom) presented his accounting of the size and breakdown of the chapter membership and presented six (6) membership applications for the Board's consideration during New Business.
  - Would like to create and fund a PayPal account so membership transactions can be done online.

The following officers and committee chairs presented their updates to the Board:

- Chapter 1st Vice President Jack Mandel (Conservation & Farm Operations) – Calendar:
  - Carol Hulce-Efdimis wants to do Chapter House Christmas decorating on December 1 and party on December 8 at 6:30pm.
  - November Monthly Dinner Meeting and Board of Governors Meeting will be November 21.
  - Chapter House Maintenance (Tucker Mostrom) – in the process of replacing outlets. Would like to do something about the holly bush outside of the Chapter House boardroom.
  - Log Cabin – Received a few names from Don Perino for possible replacements as committee chair.
- Chapter 2nd Vice President Jeff Seaman (Recreation) –
  - Shotgun Range (Warner Parks) – Wants to upgrade/replace equipment that is falling apart.
- Maryland State IWLA Division / IWLA National (Bob Pavlick) – MD division meeting on October 13 at the Mid-Shore Chapter (second 2020 convention planning meeting). Please contact Bob, Shannon Novak, or Scott Harmon to be involved in convention planning.

## NEW BUSINESS (Motions from the meeting floor)

- Tucker Mostrom – Motion to approve six (6) applications for Chapter membership – seconded and approved.
- Bill Sherrill – Motion to approve Jim Tate's letter to Legacy as amended for \$2,500 in funds for the bridge study – seconded and approved.
- Tucker Mostrom – Motion that the Board empowers the chapter Treasurer to create a PayPal account for Chapter funds to be used exclusively for paying State and National dues – seconded and approved.
- Jack Mandel – Motion to approve the purchase of two new trap machines for the shotgun range for no more than \$4,100 to be funded from Cap Ex. – seconded and approved.

## TALKS FOR THE GOOD OF THE CHAPTER

- Mark Gochmour – Would like to form an Ad Hoc Committee for the 1,000th dinner meeting in January.
- Tom Lamkin – Thanked Jim Tate for his year serving as Chapter President.
- Bob Pavlick – Andy Wight is setting up a stand for Poolesville Day on September 15 – set up around 8:00am. Event runs 10:00am – 4:00pm.
- Motion to Adjourn was seconded and approved by acclamation at 9:10pm.

## Guest Speaker at the October 17 Dinner Meeting

Enjoy a presentation by guest speaker David Cleaves. David, retired from USDA's Forest Service, is currently working as a consultant. His last position with the Forest Service was Climate Change Advisor to the Chief, US Forest Service, Department of Agriculture. His presentation will be about "The Changing Climate – Thoughts for Outdoor Enthusiasts".

## Fall Hunter Safety 2018

John Lamb, Hunter Education Committee Chair  
jpatricklamb@aol.com

The September 8 and 9 Hunter Safety Classroom Course was a complete success! Though it was a soggy outing, the students and instructors persevered to completion with a 100% passing of 38 students. A special thanks goes to all my instructors for the efforts:

Frank Och, Allan Smith, Butch Mezick, Tad Bodmer, Ken Forti, Richard Latimer Jr., Jeff Cameron, Walter Allensworth, Mark Gochmour, David Bixler, Dun Scott, Scott Harmon, Greg Mueller, and Frank Markus

The 2019 classes are to be held on May 4 and 5 and September 7 and 8. Registration for these classes will be open after the 1st of January at [www.register-ed.com](http://www.register-ed.com).

## FeederWatch Orientation

Diane Seward, Citizen Science Projects Coordinator  
trina65@verizon.net

FeederWatch, an annual project of the Cornell Lab of Ornithology in which we participate, will begin on November 10, 2018, and run through early April 2019. Chapter orientation will take place on Saturday, November 10, at 10:00am in the chapter house. Jim Tate, Larry Anderson, and Diane Seward will discuss the project, and we will do our first count of the season. Come hone your bird i.d. skills and learn how to count feeder birds for the project, or refresh your recollection about last year's count. No experience is necessary. Bring binoculars.

Please let me know if you plan to attend the orientation.

## DRIVING ON CHAPTER PROPERTY

Privately owned vehicles are to remain on the main Chapter roads at all times. They are NOT allowed to drive through the fields or park in open areas. This includes no vehicle traffic to the back pond or in the fields unless the vehicle is in use in conjunction with a project being overseen by a Chairman or Committee.

## Membership Committee Report

R. Tucker Mostrom, Membership Secretary  
MembershipSecretary.BCC.IWLA@gmail.com

### MEMBERSHIP RENEWALS UPDATE

- The invoices from IWLA National were completely updated with applicable work premiums and packaged for mailing on Fall Cleanup Day (September 29) by a group of volunteers led by Carol Hulce-Efdimis, past-Membership Secretary. Members should have received their renewal packages by the time they receive this newsletter.
- Reminder: Members have until December 31 to earn their six 2018 volunteer hours. 2018 is NOT over yet even though members have received their renewal applications.
- Members have until January 31 to get their renewals in without a \$33 late fee.
- Members hunting on the property in January MUST have had their renewals received by the chapter OR these hunters do NOT have the legally required written permission to hunt on the B-CC IWLA property.
- In lieu of a formal membership card, members whose renewals have been received by the chapter may request an email from the Membership Secretary that validates their good standing to carry in the field as written permission to hunt.

### CHAPTER MEMBERSHIP UPDATE

Membership stands at the following levels as of the September Board of Governors meeting:

540 Individual members
174 Family members (x2=348)
2 Youth Members
15 Student Members
13 Associate Members
<u>83 Retired Members</u>
1,001 Active memberships

## Welcome to the B-CC IWLA Family

The following members were inducted at the September dinner meeting:

### Mark Fleury

*Interests:* Farm; Ponds & Streams Management; Youth Activities/Scouting

### John Gorney

*Interests:* Archery; Hunter Education; Rifle & Pistol; Trap, Skeet, & Sporting Clays; Youth Activities/Scouting; Chapter Functions (Cleanup, Foodservice); Archaeology

### Michael Harrington

*Interests:* Conservation Education; Forestry; Trap, Skeet, & Sporting Clays

### Victor Kernus

*Interests:* Family Picnic; Hunter Education; Rifle & Pistol

### Sang Kim

*Interests:* Family Picnic; Hunter Education; Rifle & Pistol

### Andy O'Brien

*Interests:* Chapter Public Affairs; Recreational Activities; Scout Camp Area

### Craig A. Rodgers

*Interests:* Archery; Facilities; Wildlife Management; Chapter Functions (Cleanup, Foodservice); Archaeology



Check out our Facebook page!

Izaak Walton League of America  
Bethesda – Chevy Chase Chapter

## 2020 IWLA National Convention

The Maryland Division of the IWLA will host the 2020 IWLA National Convention at the Hyatt Regency Chesapeake Bay Golf, Resort, Spa and Marina in Cambridge, MD, July 12-15, 2020. Special rate – \$165 per night.

The Hyatt is the ideal setting to work or play by the bay! Reconnect with family, friends, colleagues, and nature. Explore the 342 acres situated on the Choptank River with a 150 slip full service marina, recharge with one of the many services at Sago Spa & Salon, challenge someone to a round of golf at our River Marsh Golf Course, or simply enjoy the expansive views as you lounge by the pool.

Contact Bob Pavlick (301 348-5892, roberpav1@verizon.net), Shannon Novak (301 785-8461, snovak516@gmail.com), or Scott Harmon (215 450-6903, scott.w.harmon@verizon.net) if you would like to help plan or just be involved with the event.

## Adopt-A-Road Cleanup

The B-CC IWLA Adopt-A-Road team will meet at the Chapter House at 8:00am for cleanup on **Saturday, December 8.**

Litter bags, gloves, and orange traffic vests will be made available for participants. If you would like to participate or have questions concerning the upcoming road cleanups, contact John Robinson – 301 641-1188.



## CALENDAR OF EVENTS

Date(s)	Activity	Time
<b>OCTOBER</b>		
Monday, October 1	Scout Troop 496 Meeting	7:00pm
Saturday, October 6	Friction Fire Class – Boy Scout Fox Campsite – Sign up required	10:00am – 3:00pm
Monday, October 8	Scout Troop 496 Meeting	7:00pm
Friday, October 12	Rural Republican Women's Set Up	Afternoon
Saturday, October 13	Biathlon Practice	7:30am
Saturday, October 13	Rural Republican Women's Night in the Country	all day
Saturday, October 13	Eagles Junior Rifle Club – Practice at R&P Range	1:00pm – 3:00pm
Sunday, October 14	Chapter House Cleanup	9:00am – 12:00 noon
Monday, October 15	Scout Troop 496 Meeting	7:00pm
Wednesday, October 17	Monthly Membership Dinner Meeting	6:30pm
Saturday, October 20	Shotgun Range and R&P Range <b>CLOSED</b> – Muzzloader Season	All Day
Saturday, October 20	Fall Family Campout	2:30pm
Sunday, October 21	Fall Family Campout	until 10:00am
Sunday, October 21	Winter Sporting Clays League	9:00am – 1:00pm
Monday, October 22	Scout Troop 496 Meeting	7:00pm
Wednesday, October 24	Board of Governors Meeting	7:30pm
Saturday, October 27	Shotgun Range Officer Class – in the Chapter House	9:00am
Saturday, October 27	Eagles Junior Rifle Club – Practice at R&P Range	1:00pm – 3:00pm
Monday, October 29	Scout Troop 496 Meeting	7:00pm
<b>NOVEMBER</b>		
Saturday, November 3	Biathlon Practice	7:30am
Saturday, November 3	Eagles Junior Rifle Club – Practice at R&P Range	1:00pm - 3:00pm
Monday, November 5	Scout Troop 496 Meeting	7:00pm
Saturday, November 10	Biathlon Practice	7:30am
Saturday, November 10	FeederWatch Orientation Meeting	10:00am
Monday, November 12	Scout Troop 496 Meeting	7:00pm
Saturday, November 17	Chapter House Cleanup	9:00am – 12:00 noon
Sunday, November 18	Winter Sporting Clays League	9:00am – 1:00pm
Wednesday, November 21	Monthly Dinner Meeting	6:30pm
Wednesday, November 21	Board of Governors Meeting	immediately following Dinner Meeting – 8:30pm
Saturday, November 24	R&P Range and Shotgun Ranges <b>CLOSED</b> – Firearms Season	All Day
Sunday, November 25	R&P Range <b>CLOSED</b> – Firearms Season	All Day
Monday, November 26	Scout Troop 496 Meeting	7:00pm
<b>DECEMBER</b>		
Saturday, December 1	Decorate the Chapter House for the Holidays	10:00am – 12:00 noon
Monday, December 3	Scout Troop 496 Meeting	7:00pm
Saturday, December 8	Adopt A-Road Cleanup – meet at the Chapter House	8:00am
Saturday, December 8	Chapter Holiday Party	7:00pm
Sunday, December 9	Winter Sporting Clays League	9:00am – 1:00pm
Monday, December 10	Scout Troop 496 Meeting	7:00pm
Saturday, December 15	Chapter House Cleanup	9:00am- 12:00 noon
Saturday, December 15	Eagles Junior Rifle Club – Practice at R&P Range – Holiday Reindeer Shoot	1:00pm – 3:00pm
Monday, December 17	Scout Troop 496 Meeting	7:00pm
Wednesday, December 19	Monthly Dinner Meeting	6:30pm
Wednesday, December 19	Board of Governors Meeting	immediately following Dinner Meeting – 8:30pm

**The Campground is closed during all black powder and firearms deer season.  
Check the online [www.bcciwla.org](http://www.bcciwla.org) electronic calendar for current and updated scheduled times of events.**

### **As a reminder...**

All chapter members wishing to hunt on our farm must register on the Chapter website to acknowledge understanding our rules and property boundaries. This is a yearly requirement.

### **REMEMBER...**

Hunting on the B-CC IWLA property is for members only – guest hunters **are not** permitted.



The Chapter is hosting its annual Holiday Party on Saturday, December 8 at 7:00pm. Members, their families and/or guests are all invited to attend this casual event for an evening of great company, wonderful food and holiday cheer. All attendees are asked to bring an entrée to share with their fellow holiday revelers. A side dish and/or dessert are a welcome choice also. We will provide the beverages.

You may also bring your own beverage of choice.

Last year's party was fun and festive with the food being a feast for the holidays. This year's event should be just as wonderful. So kick your holiday spirit in gear and come on out!

## Archery Report

Dave Drazen, Committee Chair  
301 655-8459 (Cell) daviddrazen@gmail.com

The fall lull for archery has started. The archery committee is busy out shooting at the bags on the range, hunting, or just out enjoying this beautiful weather. We are busy planning about what we want to do with our grant from IWLA National and are working on lots of great ideas for the spring.

If you're interested in joining us or just want to provide input, please send me a note. I would love to get your thoughts on how we might improve our archery offerings.

As always the bags on the range are open to members to shoot, but with field points only. No broadheads (yet). We plan to set up some broadhead targets next year to provide members an opportunity to tune their arrow flight.

If you're interested on getting on the archery email list, just shoot me an email.

## B-CC IWLA Eagles Junior Rifle Club

Rex Gori, Head Coach  
301 922-8328 aurelius.gori1@verizon.net

Do you want to learn to shoot .22 rifles well? If you or any youth you might know (11 and up) who wishes to learn to shoot safely and effectively, give me a call or send me an email. Years ago, one of our great "kids" was a 63 year-old attorney! Another amazing young lady participant went on to shoot in Junior Olympic competitions just a couple of years ago! The B-CC IWLA Eagles Junior Rifle Club's 2018-2019 season begins in October 13 at the R&P Range. We practice approximately twice a month until June. We normally meet at the R&P Range on Saturdays at 1:00pm. Participants earn NRA qualification awards and medals, have fun, and gain great skills. There are even several fun in-house competitions with prizes! Our reasonable season fee is \$90.00 (\$70.00 for B-CC IWLA Members). I hope you can join us. If interested, please give me a call or send me an email (listed above).

### 2018 – 2019 SHOOTING SCHEDULE

We meet on Saturdays listed below from 1:00 to 3:00pm unless otherwise noted.

Clean Up begins 1/2 hour before end of Practice.

#### 2018

October 13	Practice – 1:00pm
October 27	Practice – 1:00pm
November 3	Practice – 1:00pm
November 24	Practice – 1:00pm
December 15	Practice – 1:00pm ***Holiday Reindeer Shoot

#### \*\*\*Happy Holidays and Winter Break\*\*\*

#### 2019

January 26	Practice – 1:00pm
February 2	Practice – 1:00pm ***Groundhog Target Shoot
March 9	Practice – 1:00pm
March 23	Practice – 1:00pm
April 6	Practice – 1:00pm
April 27	Practice – 1:00pm
May 11	Practice – 5:00pm
May 25	Practice – 5:00pm
June 15	Fun Targets / Final Match and Picnic Shoot – 5:00pm

**Always check your e-mail before heading out to practice.** If weather conditions or range conditions change, we may have to cancel. I will notify all of you via email. **This schedule may be subject to change. You will be notified in advance via phone or email.**

## IWLA Maryland State Division

The Fall Division meeting will be held on Saturday, October 13 at the Mid-Shore Chapter in Trappe, Talbot County (<https://sites.google.com/view/mid-shorechapter/home/locate-us>).

## Shotgun Range Report

Warner Parks, Committee Chair  
301 540-1947 (Home) 240 620-6942 (Cell)  
wparks29@gmail.com

There will be a **Range Officer training class** on Saturday, October 27 at 9:00am for anyone interested in becoming a shotgun range officer. Please meet in the Chapter House.

**B-CC Winter League** dates are Sunday, October 21; Sunday, November 18; and Sunday, December 9. Please remember that there will be no trap and skeet shooting on the above dates until the last squad has shot and the fields are clear.

All **Range Officers** please note that the range will be **closed at 1:00pm** on the following Saturdays in order to set up for the Winter League: *Saturday, October 20, Saturday, November 17, and Saturday, December 8.*

Range will also be **CLOSED** on Saturday, October 20 for opening day of Muzzleloader Season and Saturday, November 24 for opening day of Firearms Season. Range will be **OPEN** on Sunday, November 25 for normal activities.

Remember to stand to the side when cocking all arms. THE TRAP MACHINE needs a few minutes to warm up before you cock the throwing arm.

Refill and restock the skeet houses and uncock all machines when done. Additional targets are stored in the container next to the parking lot, the trailer under the tower, and the low skeet house on the left field.

Please pick up your empty shotgun shells and trash when finished shooting. Keep the range clean and restocked for the next range officer and shooters.

All Shotgun Range Equipment is to be used by pre-qualified Shotgun Range Officers ONLY. If any equipment is malfunctioning, please let Joel or me know ASAP.

### RANGE OFFICER SCHEDULE

#### OCTOBER

Sunday, Oct. 7	Mike Noble
Sunday, Oct. 14	Logan Bush, Lyle Bush
Sunday, Oct. 21	John Frick, Rick Tomlin – <b>Winter League</b>
Sunday, Oct. 28	Mark Wildman, Andy Latos

#### NOVEMBER

Sunday, Nov. 4	Tim Jorgensen, John Novak, Shannon Novak
Sunday, Nov. 11	Steve Kirstein, Keith Fungler
Sunday, Nov. 18	Kohler Bradford – <b>Winter League</b>
Sunday, Nov. 25	Dave Hill

### HOURS OF OPERATION

Sunday's 9:00am – 5:00pm Trap, Skeet, Sporting Clays

## Chapter Grounds Committee

Andy Wight, Committee Chair  
andywight1@hotmail.com

Here is a great chance to make a lasting difference to the Chapter House. I am looking for volunteers to help with the newly formed group "Chapter Grounds Committee". Initially we will be looking at designing and developing the area around the propane tank (between the Chapter House and barbeque pit). If you have any thoughts, concerns, or input and would like to be involved in designing and developing a new look, please send me an email.

## Chapter House Holiday Decorating

On Saturday, December 1, we will be decorating the Chapter House for the upcoming Holiday Season. The decorating will start at 10:00am. We are in need of people to decorate inside and outside.



### Bethesda-Chevy Chase Izaak Walton League

Poolesville, MD

Contact: Warner Parks – 240 620-6942

#### Shoot Dates

September 16 ♦ October 21

November 18 ♦ December 9

**9:00am until 1:00pm (final signup)**



### Frederick County Fish & Game

Pt. of Rocks, MD

Contact: John Ortaldo – 301 695-8322

#### Shoot Dates

September 9 ♦ October 7

November 4 ♦ December 2

**9:00am until 1:00pm (final signup)**



### League Details

League will consist of 8 shoots held at 2 different clubs. Each shoot will be 50 Targets.

**Entry Fee:** \$15.00

**Load Limit:** 12 Gauge 1-1/8 oz. – 3 Dram Equiv. 7-1/2

Optional Lewis (\$5) Purse [3 places/(60-40%)]

Lucky Draw \$ Game

## MEMBERSHIP DINNER MEETING

### Dinner Speaker – David Cleaves

*"The Changing Climate – Thoughts for Outdoor Enthusiasts"*

The **997th** dinner meeting will be held on **Wednesday, October 17** at the B-CC IWLA Chapter House. Dinner will be served beginning around 6:15pm. All members and guests are invited.

**Appetizers** will be available before dinner. Dinner this month will include **Salad, Pitt Roasted Beef, Baked Potatoes, Vegetable, Rolls, Lemonade, and Dessert.**

## BOARD OF GOVERNORS MEETING

The Board of Governors meeting will be held at the **B-CC IWLA Chapter House** on **Wednesday, October 24**. Board members are expected to **attend.**

## Rifle & Pistol Range Report

Thoran Menser, Committee Chair  
301 972-8353 bcciwla.rp@gmail.com

Chris Efdimis, Chief Range Officer  
240 372-2258 bcciwla.rp@gmail.com

### REMINDERS

- All Must PICK UP THEIR BRASS!
- Put paper in the trash. If the cans are full, please empty them.
- Keep watch on Guests you bring. It is your place to brief them on the SOP's.
- Be safe and enjoy the range respectfully.
- Range will be **CLOSED** on Saturday, October 20 for opening day of Muzzleloader Season
- Range will be **CLOSED** on Saturday, November 24 and Sunday, November 25 for opening weekend of Firearms Season

### RANGE OFFICER DUTY DAYS

#### OCTOBER

- Saturday, Oct. 6 **Leahy, M.**, Bixler, D., Gentzel, K., Sigalas, G.  
Sunday, Oct. 7 **Hess, L.**, Sigalas, G., Panashchenko, O., Schissell, R., Benson, R., Howard, C., Waterman, S.
- Saturday, Oct. 13 **McKenney, D.**, Urgo, C., Dickerson, C., Schissell, R., Kawamoto, D.  
Sunday, Oct. 14 **Elkins, B.**, Murray, J., McKenney, D., Dickerson, C., Calderwood, J., Wight, A.
- Saturday, Oct. 20 **Bryan, K.**  
Sunday, Oct. 21 **Ives, S.**, Riccio, R., Finnegan, J., Donovan, P., Wight, A.
- Saturday, Oct. 27 **Greenberg, B.**, Bush, L., Bush, L., Rikhter, Y., Twomey, P., Brafford, K.  
Sunday, Oct. 28 **Jones, R.**, Princiotto, M., King, K., Abid, G., Calderwood, J., Twomey, P.

#### NOVEMBER

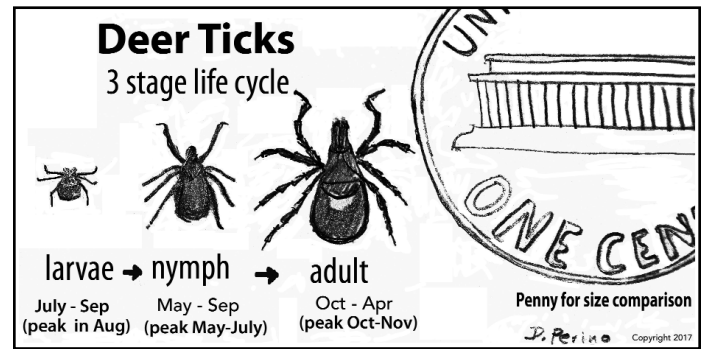
- Saturday, Nov. 3 **Terrell, J.**, Griffin, J., Trotter, L., White, M., Ivusic, S.  
Sunday, Nov. 4 **Epstein, G.**, Hodgson, E., Terrell, J., Trotter, L., Peterson, K.
- Saturday, Nov. 10 **Gori, R.**, Rikhter, Y., Turner, J., White, M.  
Sunday, Nov. 11 **Princiotto, M.**, Jones, R., Lowe, C., Pickrel, T., Ivusic, S.
- Saturday, Nov. 17 **Finley, J.**, Gori, R., Pickrel, T., Johnson, G., Vincent, M.  
Sunday, Nov. 18 **Murray, J.**, Hodgson, E., Elkins, B., Neily, J., Vincent, M
- Friday, Nov. 23 **Bryan, K.**, Milway, J., Kawamoto, D.  
Saturday, Nov. 24 **Goldshine, W.**  
Sunday, Nov. 25 **Tvelia, J.**

#### DECEMBER

- Saturday, Dec. 1 **Chung, K.**, Gochnour, G., Turner, J., Peterson, K., Brafford, K.  
Sunday, Dec. 2 **Neily, J.**, Epstein, G., Flinchum, D., Crowe, C.  
Saturday, Dec. 8 **Kang, J.**, Kang, Y., Yau, T., Drummond, R., Gochnour, G., Hendrickson, J.  
Sunday, Dec. 9 **Pedersen, P.**, Keller, A., Johnson, G., Flinchum, D., Hendrickson, J.
- Saturday, Dec. 15 **Lowe, C.**  
Sunday, Dec. 16  
Saturday, Dec. 22  
Sunday, Dec. 23  
Saturday, Dec. 29 **Keller, A.**, Pedersen, P.  
Sunday, Dec. 30 **Tvelia, J.**

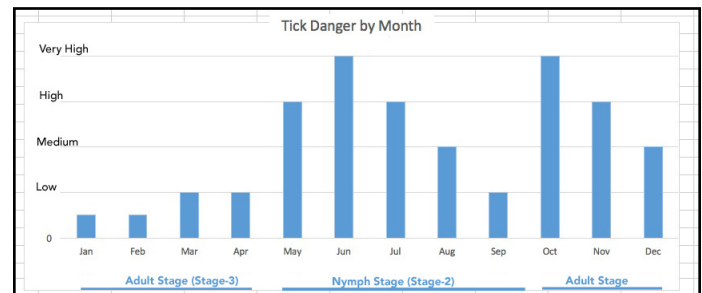
## Please Don't Feed the Ticks

Don Perino



### UNDERSTANDING DEER TICKS

Deer ticks are a concern because they can transmit a number of dangerous diseases such as Lyme Disease and Rocky Mountain Spotted Fever. But things are a little complicated because ticks have a 3-stage life cycle that spans two years. Therefore the degree of tick activity varies month-to-month. And the size of the ticks changes as well. The accompanying charts show the tick danger level varies throughout the year. The other diagram indicates the size of the tick as it transforms through it's three stages. (Note: The larve stage are not considered dangerous.)



### HOW TO DEAL WITH TICKS

1. Use a repellent such as Permethrin and/or DEET (Note: Permethrin works best).
2. Wear light colored clothing. This makes it easier to see the tick.
3. Consider wearing long pants and tucking them into your socks.
4. Check for ticks when you return home.
5. Note: A handy way to capture and dispose of a tick is with adhesive tape.

If you do find a tick embedded in your skin don't panic. If it's removed during the first day the danger of infection is low. Use tweezers to grasp the tick as close to the skin as possible. **DO NOT SQUEEZE THE BODY.** Then pull backwards with steady pressure. After the tick is removed, wash the area and apply alcohol or another disinfectant. Try to remove any mouth parts that are stuck in the skin. But if you can't remove them your body will probably expel them on its own.

### Shotgun Range Class

A Range Officer Training Class will be held in the Chapter House on Saturday, October 27 starting at 9:00am for anyone interested in becoming a shotgun range officer. Contact Warner Parks (240 620-6942 or wparks29@gmail.com) if you have questions.



## Wildlife Report

Larry Anderson, Committee Chair  
240 246-5302 andupton9@hotmail.com

Deer firearms seasons start on October 18th with the early muzzleloader season. We ask that all hunters be safe and courteous, read and follow our rules and respect the all property lines. B-CC IWLA chapter website has our updated rules and a variety of methods to distinguish our property lines. The Chapter's Trail Guide on the website is a good way to familiarize yourself with the trails and the boundaries of our Conservation Farm. All members intending to hunt on our farm must acknowledge that they have read our rules and understand where our property lines are by registering on our website. This is an yearly requirement.

We **do not** have permission to hunt or go on any of our neighbor's properties. In the event that you wound an animal and it expires on the property owned by Joe Morin, located to the north and west of our farm on several different boundaries, or the property owned by Vikki Van Winkle, located north of the NE Woods, you may enter their property only after calling them and asking permission. You must not enter their properties with a weapon of any kind – **Joe Morin** (301 674-5397) **Vikki Van Winkle** (301 379-3560).

Our farm is considered private property (MD-DNR land code 430 for harvest check in), so your current valid membership card is used as the written permission to hunt as required by MD DNR and must be carried along with your valid hunting license. Also, a current B-CC IWLA chapter vehicle decal must be visible in all vehicles on the farm. We ask that deer and turkeys taken on our farm be recorded either in our game logbook, located outside the chapter house's main door; or by sending an email to andupton9@hotmail.com. When reporting your deer or turkeys, we ask for the following information; your name, doe or buck (antler count), date and weapon used, and the total number of ticks found on the ears of your deer. Other details may also be included such as estimated weight or unusual features.

New this year, only two bucks may be taken statewide throughout the hunting year, only one of which can have less than three points on an antler. Only one buck may be taken in a weapon year. A bonus buck may be taken in region B (our

region) after purchasing a bonus buck stamp and can be used for any weapon season, still maintaining the antler point restrictions. The requirement to harvest two does prior to using the bonus buck stamp has been removed. Also new this year, fluorescent pink is an approved legal color like fluorescent orange that hunters must wear to promote hunter safety. This change will require all of us to watch for two colors in the field that will alert us to other hunters.

We have evidence that a bear is still on or near our farm. A bear print was found and recorded by John Therault around the big pond in early September (between rainstorms).

Bears are protected in Montgomery County and we adhere to the policies setup by MD DNR. We ask that all of our members be aware of the possibility of encountering a bear does exist while on our farm.



**Catch a Poacher 24 Hour Hotline  
1-800-635-6124**

Citizens who supply Maryland Natural Resources Police with information leading to the arrest and conviction of a poaching violator are eligible to receive cash rewards. Give names, addresses, vehicle descriptions, and as much information as possible. The anonymity of the caller is guaranteed.

**To report nuisance, injured or sick wildlife  
(Monday – Friday, 8:00am – 4:30pm)  
Call Toll-free in Maryland: 1-877-463-6497**

---

## 2018 Land Fund

**As a member of the B-CC IWLA, I want to do my part and contribute the following amount to the B-CC IWLA Land Fund Campaign.**

Name \_\_\_\_\_

Address \_\_\_\_\_

City \_\_\_\_\_ State \_\_\_\_\_ Zip \_\_\_\_\_

\_\_\_\_\_ **\$50**    \_\_\_\_\_ **\$100**    \_\_\_\_\_ **\$200**    \_\_\_\_\_ **\$500**    \_\_\_\_\_ **\$1000**    \_\_\_\_\_ **OTHER**

***Your contribution is tax deductible.***

**Please mail contribution form and check (written out to B-CC IWLA) to Tucker Mostrom, B-CC IWLA, PO Box 542, Poolesville, MD 20837**

# Fall Family Campout



2:30pm, Saturday, October 20  
until 10:00am, Sunday, October 21

This event, open to members and their guests, is a great way to spend time with your kids, get away from the smart phones and TV, and enjoy some of the benefits that the chapter offers.

We will be pitching tents next to the Chapter House parking lot. The Chapter House will remain open throughout the night.

## SATURDAY

- 2:30 – 6:00pm Gate open to pitch tents
- 3:00 – 4:30pm Fishing at the big pond
- 5:00 – 6:00pm Burgers/Dogs, etc., at the Chapter House
- 6:00 – 7:30pm Field Craft – learn how to build and sustain a camp fire
- 7:30 – 8:00pm Mystery activities
- 8:00 – 8:45pm S'mores and hot chocolate

## SUNDAY

- 7:00 – 8:00am Breakfast in the Chapter House

An email announcement will be sent out with more details. There is no fee for the campout, but RSVP's would be appreciated. Let us know how many people will be coming and if you require a vegetarian meal to ensure that we have enough food to go around.

We will contact you if the weather looks to be problematic.

### RSVP to:

**Andy Wight, Conservation Education Committee Chair**  
Conservation.Ed.BCC.IWLA@gmail.com

## Farm Report

Phil Taylor, Committee Chair  
Farm.BCC.IWLA@gmail.com

The Farm Committee had a plan in place this fall for planting the fields. The heavy rainfall our area has experienced this year has made planting almost impossible. It doesn't take much rain to turn our clay soil to mud. The muddy conditions made it a challenge to keep up with mowing around the farm this year. One of our plans this fall was to plant the B2 and A4 fields with a pasture mix that's attractive to whitetail deer. This mix once established would provide forage for deer all year long. Once the fields are planted with this mix they would only require mowing a few times a year to promote new growth. The wet conditions made it impossible to access the fields with equipment to plant. We now are hoping to plant them next spring. We were able to get a small window of opportunity on the second week of September to plant our fields with a winter cover crop mix. The purpose for covering our fields over the winter is to prevent erosion, recycle nutrients, feed our soil biology, feed wildlife and build up our organic matter. We designed two different seed mixes to plant on the farm. We planted the A2 and garden fields with rye, winter peas, oats, buckwheat, crimson clover, and tillage radish. The mix we chose for the B3 and B4 fields was triticale, tillage radish, forage turnip, brassica, rapeseed, winter peas, crimson clover, buckwheat, and oats. Both mixes are very beneficial to building soil health. The B3 and B4 fields are located towards the center of our property, with that in mind we decided to design a cover mix that will attract whitetail deer. We have soybeans planted in the B4 field. Hopefully on the last week of September we can broadcast rye, winter peas, rapeseed, buckwheat, and radishes into the standing beans. The purpose for that is when the soybeans start to die in the early part of October, the seed that was broadcasted will have already started to grow covering the soil and provide food for the wildlife over the winter. We will soon be taking soil samples to see the health status of our soil. The farm committee goal over the past few years was to plant diverse mixes to build soil health and the soil test are proving success. The local farmers in our area are using aircraft to apply their cover crop seed because of the wet fields. Planting the farm this year had its ups and downs due to the weather but that's farming. It was great to see members and their families enjoying the farm on the opening day of dove season. I want to thank all of those who helped out on the farm this year. As always, I recommend everyone to take a walk on the farm and enjoy all its beauty.



## For the Birds: Voice of the Naturalist, FeederWatch and Florence

jim@tate-tate.us

When Lin and I moved to the DC area, oh so many years ago, we left our homes in Colorado and western Nebraska for the forested mid Atlantic. **Cadbury**, our Montana bred chocolate Labrador, didn't care for the narrow spaces between trees, lack of Sage Grouse, or city living. I too was in denial until I found B-CC IWLA and some room to roam on the Conservation Farm. Slowly I began to learn a new flora and fauna of birds and bees, flowers and trees.

We soon found the **Voice of The Naturalist** (<https://anshome.org/voice-of-the-naturalist/>) a telephone recording of the birds seen locally during the previous week. The VON was and still is a great tool for getting the latest gossip on local rare birds and recent sightings in the MD, DC, VA region. Do you recall the recorded messages for time and weather? That was how the VON provided a verbal snapshot of the birds seen locally the week before. From the VON we quickly got up to date on where to take our Lab to see and learn about our new home.

Now, thirty years later, almost as if it was planned in 1982 when we moved here, I have joined a small group of compilers who put out the weekly Voice of the Naturalist. I am playing catch up with these very talented birder volunteers at the **Audubon Naturalist Society**, but as I have often said before, *I am still learning.*

The VON is no longer a telephone recording. The source data for the VON come in electronically through websites, Facebook pages, and eBird lists. I have previously urged you to go to eBird to learn about birds. Now I also urge you to use Voice of the Naturalist to keep current with the avifauna of our area.

**Roseate Spoonbills** have had a breeding boom this summer and some of them have been showing up in our area according to this article from Audubon: (<https://www.audubon.org/news/the-real-reason-behind-years-bizarre-spoonbill-sightings>). Take a look, you will find Roseate Spoonbills on several of the VON lists this late summer and fall.

Please join us at the B-CC orientation session for the first count day of this winter's project **FeederWatch**, November 10, 2018. This effort led by **Diane Seward** (Citizen Science Projects Coordinator, [trina65@verizon.net](mailto:trina65@verizon.net)) will do the first count of the season as well as sign up volunteer watchers. Come hone your bird ID skills and learn how to count feeder birds for the project, or refresh your recollection about last year's count. No experience is necessary. Bring binoculars. Please let Diane know if you plan to attend the orientation. We are looking forward to good winter finch counts at our feeders, because this year's **Winter Finch Forecast** (<http://jeaniron.ca/2018/wff18.htm>) predicts irruption years for many boreal species.

Hurricanes pick up and move birds hundreds or thousands of miles out of their normal ranges, (Washington Post 9/19. ([https://www.washingtonpost.com/science/2018/09/19/many-people-flee-hurricanes-some-birders-flock-them/?no\\_redirect=on&utm\\_term=.939d0cf93f79](https://www.washingtonpost.com/science/2018/09/19/many-people-flee-hurricanes-some-birders-flock-them/?no_redirect=on&utm_term=.939d0cf93f79))). Several terns and seabirds were reported on VON during and soon after Hurricane Florence. At the same time, summer birds that normally leave for the winter were held up by Florence. The persistent, but large low-pressure area effectively blocked off migration through the southeastern states. **Ruby-throated Hummingbirds** for example stayed with us in Maryland at least two weeks longer than in past years.

I look forward to seeing you on the B-CC IWLA Conservation Farm.



PHOTO BY TATE

*Ruby-throated Hummingbird at the Shotgun Range feeder.*

**Bethesda-Chevy Chase Chapter  
IZAAK WALTON LEAGUE OF AMERICA  
FY2018-2019 Operating Budget**

**Below is the 2018-2019 proposed budget that will be voted on by the Chapter membership at the monthly dinner meeting on Wednesday, October 17, 2018.**

PROJECTED INCOME	BUDGETED AMOUNT ( \$ )	PROJECTED EXPENSES	BUDGETED AMOUNT ( \$ )
<b>Contributions</b>		513 Junior Rifle Team	600.00
417 Chapter House Use Donations	200.00	514 Christmas Party	200.00
421 Donations & Grants	2,000.00	516 Special Events	300.00
422 Campground Donations	500.00	517 Chapter House Supplies	600.00
490 Land Fund Contributions	0.00	519 Vegetable Garden	600.00
<b>Total-Contributions</b>	<b>2,700.00</b>	520 Hat, Cap, Clothing, Mug, Etc.	1,500.00
<b>Membership Dues</b>		522 Campground Maintenance	3,000.00
401 Membership Renewal Fees	160,000.00	524 Past Presidents' Dinner	1,500.00
402 New Member Initiation Fee	11,000.00	550 Land Fund Expenses	160.00
803 Volunteer (In Lieu)	18,000.00	555 Net Zero	480.00
<b>Total-Membership Dues</b>	<b>189,000.00</b>	601 Farm Operation	14,000.00
<b>Participation Fees</b>		602 IWLA Endowment	0.00
403 Shotgun Range Fees	28,500.00	603 Farm Equipment Maintenance	6,000.00
405 Rifle & Pistol Range Fees	9,000.00	604 Gasoline & Diesel Fuel	2,500.00
406 Archery Range Fees	1,000.00	605 Wildlife Management	3,000.00
413 Junior Rifle Team	1,135.00	606 Ponds and Streams	4,900.00
423 Firearm Courses	0.00	607 Forestry Management	500.00
425 Security Cards	800.00	609 Trails	1,200.00
802 Scout Income	1,000.00	610 Conservation Education	8,000.00
<b>Total-Participation Fees</b>	<b>41,435.00</b>	611 Guide to Conservation Farm	4,000.00
<b>Dinners &amp; Events</b>		613 Environmental Stewardship	5,000.00
404 Dinner Meeting Sales	9,000.00	614 Log Cabin Maintenance	500.00
407 Family Picnic / Auction	800.00	615 Floral Gardens	500.00
408 Dove Shoot	120.00	616 Greenhouse	1,000.00
409 Republican Women's Dinner	880.00	617 Spring Clean-up	600.00
412 Christmas Tree Sales	320.00	618 Fall Clean-up	600.00
<b>Total-Dinners &amp; Events</b>	<b>11,120.00</b>	620 Building Maintenance	3,000.00
<b>Investment Income</b>		621 Road Repair & Snow Removal	1,000.00
418 Interest	10.00	622 Kitchen Equip & Maintenance	1,750.00
<b>Total-Investment Income</b>	<b>10.00</b>	624 Chapter House Equipment	250.00
<b>Other Income</b>		630 Insurance	32,000.00
790 BCC-IWLA Legacy Foundation	0.00	631 Newsletter Publishing	5,000.00
411 Vending Machines	0.00	632 Propane	2,800.00
416 Keys & Locks	400.00	633 Trash Removal	5,000.00
419 Garden Plot	370.00	634 Electricity	3,500.00
426 Conservation Education	10.00	635 Telephone	1,200.00
430 Insurance Premium Adjustmen	0.00	636 Misc. Administration	1,000.00
499 499 Uncategorized Income	0.00	637 Operating P-O-L	4,600.00
800 Other	600.00	638 Internet Web Site Maintenance	1,500.00
801 Cash Advance Return	500.00	639 Printing – Administrative	750.00
<b>Total-Other Income</b>	<b>1,880.00</b>	640 Postage and Mailings	1,000.00
<b>TOTAL PROJECTED INCOME</b>	<b>246,135.00</b>	641 Security	2,000.00
<b>PROJECTED EXPENSES</b>	<b>BUDGETED AMOUNT ( \$ )</b>	642 Keys and Locks	1,400.00
501 National/State IWLA Dues	42,000.00	644 Memorials and Flowers	450.00
502 Membership Administration	2,200.00	650 Scout Support	4,000.00
503 Shotgun Range Expense	24,800.00	651 Hunter Safety Course	1,000.00
504 Food & Kitchen Supplies	8,250.00	652 National Convention MD Room	200.00
505 Rifle & Pistol Range	5,550.00	653 Natl/ MD Conv – Attendance	3,500.00
506 Archery Range	3,600.00	654 Izaak Walton Cottage	0.00
507 Family Picnic / Auction	1,300.00	655 Youth Convention	100.00
508 Dove Shoot	300.00	657 Legislative	750.00
509 Republican Women's Dinner	760.00	660 Taxes	4,000.00
510 Wild Game Dinner	300.00	661 Bank Fees	1,400.00
511 Family Day & Camp Out	600.00	671 Chapter Awards	2,000.00
512 Christmas Trees	585.00	700 Other Expenses	200.00
		701 Cash Advances	500.00
		809 Donations & Grants to others	6,000.00
		810 CPA Preparation Fee	2,800.00
		<b>TOTAL PROJECTED EXPENSES</b>	<b>246,135.00</b>