



## NOVEMBER 2019 NEWSLETTER

# The Bethesda-Chevy Chase Chapter of The Izaak Walton League of America

Serving the Community Since 1935

PO Box 542, Poolesville, MD 20837

[www.bcciwla.org](http://www.bcciwla.org)

## President's Message

I present to you an opportunity, *with an investment of just a few minutes in your own neighborhood*, to simultaneously do all of the following:

- Engage yourself and young people in water conservation and chemistry
- Get them and yourself outside
- Actively participate in environmental research
- Get yourself (and your assistants) on a national, web-based data map
- Support the Izaak Walton League as a first-rate conservation organization

The League has made it very easy to do all of these things with its ingenious and expanding Salt Watch program. <https://www.iwla.org/conservation/water/winter-salt-watch>. The primary aim of the program is to gather as much such data as possible about chloride levels in streams nationwide.

With a few clicks you can order the free salt test strips and the reference card, which enables users to read the test strips. Pick a day, head to the stream. Dip your test tube or other container into the water three times to rinse. Collect your sample. Insert the test strip. Wait a moment. Read the strip. Report your findings via the Water Reporter App. Now you and your field assistants are part of the team that stretches across the country (as you will see when you download the Water Reporter app).

If you have questions, the IWLA website is a great source, particularly the "Clean Water Hub" section. If you and your assistants find the Salt Watch program interesting, you may also be interested in more in-depth stream health testing, which involves chemical measurements and observation of the macroinvertebrates in the stream. Keep an eye on your email and in the newsletters for a stream-testing event by our Ponds and Streams Committee in the near future. It is a fascinating way to spend some time outside. Stream. Boots. Nets. Magnifying glasses. Microscope. Strange creatures. Science. Your field research assistants will enjoy and remember it.

Order your Salt Watch test kit now so you (or your assistants) can get a baseline reading before the winter salting season begins. Download the app. Engage.

Jeff Seaman

President, B-CC IWLA 301 775-4973

### How to Participate



**Get Started**

- Download Water Reporter to your smart phone.
- Create your personal account.
- Join the Izaak Walton League of America group.

**Submit Reports**



Open your Water Reporter App



Click on "Start a new post"



Add the photo of your test strip and location



Enter #SaltWatch in the comments

**Important Tips**

- "Toggle on" the IWLA group on your post so that we receive it!
- Show the test strip and the reference card in your photo.
- You can share photos of giant piles of salt to the IWLA group too!

## Board of Governors

Fiscal Year: September 1, 2019 – August 31, 2020

### OFFICERS

**Jeff Seaman, President**

301 775-4973 • jeff\_seaman@hotmail.com

**Ron Marchessault, 1st Vice President**

202 320-3834 • rmarchessault12@aol.com

**Lin Tate, 2nd Vice President**

703 517-3675 • lin@tate-tate-us

**Ron Marchessault, Acting Treasurer**

202 320-3834 • rmarchessault12@aol.com

**Tucker Mostrom, Membership Secretary**

301 252-8825 • MembershipSecretary.BCC.IWLA@gmail.com

**Janet Lamkin, Corresponding Secretary**

301 466-6557 • j.lamkin@comcast.net

**Joe Trotter, Recording Secretary**

210 352-0055 • jtrotterccp@gmail.com

### BOARD MEMBERS

**Walt Allensworth**

301 221-3594 • twangermd@gmail.com

**David Boynton**

301 318-3622 • dboynton@mcccourt.com

**Shannon Novak**

301 785-8461 • snovak516@gmail.com

**Jack Shaw**

301 340-1624 • jshaw110@verizon.net

**David Waterman**

816 812-4917 • seandavid@me.com

**Jack Mandel, Past President**

202 487-8440 • jmandeldesign@gmail.com

\* Indicates Officers and Board Members who were absent from the previous month's Board of Governors meeting.

The Izaak Walton League of America – a non-profit conservation organization – is recognized as a Section 501(c)(3) public charity under the Internal Revenue Code.

Address, phone and email changes should be sent to the Membership Secretary at the above address.

Submissions to the *NEWSLETTER* should be sent to:

Janet Lamkin  
j.lamkin@comcast.net or  
Newsletter.BCC.IWLA@gmail.com  
301 466-6557



## Summary of the September 2019 Board of Governors Meeting and the October 2019 Dinner Meeting

Joe Trotter, Recording Secretary

210 352-0055 jtrotterccp@gmail.com

### September 25, 2019 Board of Governors Meeting

- Chapter President Jeff Seaman called the meeting to order at 7:30pm.
- Membership renewals are due by October 31.
- Christine Petersen is now Membership Concierge – helps guide new and prospective members.
- We need to talk about having a one-year membership type that we could give/auction, awards or courtesy for other chapters. We cannot do this without a bylaws change, which requires a membership vote.
- Phil had a great meeting with the National Agriculture Chair. Showed interest in working with MC Soil District. May use the chapter property as example of cover crops. USDA also wants to participate, come back late this fall to look at crop Phil planted. Great chance to leverage coverage farmers on this particular topic. We would be a great resource for helping the local community.
- Opening day of FeederWatch program is November 9.
- New Chapter House roof is completed. Joe Ryba did a great job! The total cost was \$26,240, almost \$4,000 less than we budgeted. It is time to start thinking about the interior of the Chapter House.
- New member interested on putting planks up for beer mugs. Has reclaimed barn wood.
- Camera at the front gate is operational!
- The ranges are closed on opening day of muzzleloader season and firearm season.
- Winter League has already started – October 20, November 10, and December 15.
- We are still in need of an Archery Chair.
- Current email system for reservations is working, as is the signup spot, for the Chapter's new UTV.
- We are waiting on our vendor to provide training before the website goes live. He is a FEMA contractor deployed at a moment's notice to natural disaster areas, so scheduling has been difficult.
- Someone on a neighboring property fell off of a deer stand, punctured his lungs, and was airlifted out. USE A FULL BODY HARNESS THIS DEER SEASON!
- 24 people showed up to the hunter safety class, many inquired about membership.

### NEW BUSINESS (Motions from the meeting floor)

- Motion to pay the invoice from Irvin Stone for \$700 to complete the Girl Scout project at the archery range – Passed.
- Motion to obtain a donation of a boardroom table and chairs – Passed.
- Motion to adjourn at 9:19pm – Passed

### October 16, 2019 Dinner Meeting

- Chapter President Jeff Seaman called the meeting to order 7:27pm.
- George Washington University came out and is interested in conducting studies on our property.

### Featured speakers:

- Jim Tate spoke about an opportunity to fish for Peacock Bass in Brazil on the Rio Negro. In a previous expedition

(continued on page 3)

## SUMMARY

(continued from page 2)

they caught an average of 24 per day, and they can weigh as much as 20lbs. It is also an opportunity to see wonderful Amazonian wildlife.

- Jim Tate, Butch Mezick, and Larry Anderson led a discussion about wild turkeys in the area. Are they back or are they not? Despite some decreasing numbers, they're everywhere, and the population exploded on the B-CC IWLA property. In the fall, they flock together, while in the spring, they go out individually in search of mates. Because of this, different tactics are needed in different seasons.

### Committee Reports:

- Christmas Trees: They are available to members, price of \$30, come cut your own! We have many different sizes.
- Wildlife Report: Muzzleloader season is here, wear orange! **RANGES ARE CLOSED ON OPENING DAY OF MUZZLOADER SEASON AND FIREARM SEASON.**
- Ponds & Streams: Small pond is well stocked with fish. Shelter is done at the big pond (and looks great!).
- Log Cabin: Pest report came in, we are weighing recommendations and creating a prioritized to-do list.
- New members are required to attend a cleanup within the first three months of their initiation! With the holidays coming up, we need greater attendance.
- Fall campout on the October 26. Open to members and members' guests, and is free!
- We are negotiating with National for support on the archives.
- November is the Walk in the Woods. Exact date will be emailed out later this month.

Meeting adjourned at 8:31pm.

### November Dinner Meeting Guest Speaker

We are fortunate to have as our dinner speaker this month oceanographer Dr. Mark Eakin, of the NOAA's Satellite Oceanography and Climatology Division. Dr. Eakin is the Coordinator of the NOAA's Coral Reef Watch program, an effort to monitor coral reef ecosystems using a variety of methods, including satellite technology and in situ observation. Dr. Eakin is the author of scientific works pertaining to various topics concerning coral reef ecology. He has testified before Congress on the impacts of climate change on coral reefs, and he was a Chief Scientific Advisor for the film "Chasing Coral," which has won awards at film festivals worldwide. Dr. Eakin will provide attendees with some highlights of the Coral Reef Watch program.

## B-CC QUIZ

**Question:** Which common plant on the B-CC Conservation Farm has been placed on the Maryland Vulnerable Watch List?

*Answer can be found elsewhere in the newsletter.*

## UPCOMING EVENTS

for B-CC IWLA and Community

### Sporting Clays League

Sundays – November 10 and December 15  
9:00am – approximately 1:00pm

### Chapter Monthly Dinner Meeting

Wednesday, November 20  
6:30pm

### New Member Orientation (all members are welcome!)

Saturday, November 23  
10:00am – 1:00pm

### Decorating the Chapter House for the Holidays

Saturday, December 7  
10:00am – 2:00pm

### Chapter Holiday Party

Saturday, December 14  
7:00pm

### New Member Tour & Orientation

Sunday, December 22  
10:00am – 12:00 noon

### Conservation Speaker Dinner

Saturday, January 25  
6:00pm

## 2019-2020 Adopt-A-Road Cleanup Schedule

The B-CC IWLA Adopt-A-Road team will meet at the Chapter House at 8:15am for cleanup on the following dates:

Saturday, December 14, 2019  
Saturday, February 8, 2020  
Saturday, April 11, 2020  
Saturday, July 11, 2020  
Saturday, September 12, 2020



Trash bags, gloves, and orange traffic vests will be made available for participants. Please direct any questions to John Robinson, 301 641-1188.

## Leaf Collection

We have several bins in which we collect leaves and grass clippings to make compost to support our planting operations. The bins(made from the large white concrete blocks) are beside the greenhouse, down by the archery range and garden plots. Donations from members are welcome. Please no plastic or no sticks larger than large pencil thickness.



# FALL AT B-CC IWLA



PHOTOS BY BRETT DAVIS





The Chapter is hosting its annual Holiday Party on Saturday, December 14 at 7:00pm. Members, their families and/or guests are all invited to attend this casual event for an evening of great company, wonderful food, and holiday cheer. All attendees are asked to bring an entrée to share with their fellow holiday revelers. A side dish and/or dessert are a welcome choice also. We will provide the beverages.

You may also bring your own beverage of choice.

Last year's party was fun and festive with the food being a feast for the holidays. This year's event should be just as wonderful. So kick your holiday spirit in gear and come on out!

## Donations are needed...

The Maryland Division needs our Chapter's help with the 2020 IWLA Convention in Cambridge, Maryland on July 20-22.

Donations are needed for the Silent Auction (3 per chapter) plus items for the Regular Auction and the Youth Convention. All items should be new. Auction items ideas: hunting, shooting, fishing, possible fishing trip, conservation related items (beekeeping, bird watching, etc.).

Corporate and Individual Sponsors are also welcome. Names will be included in a program booklet and also on a banner.

Contact Bob Pavlick for more information – roberpav1@verizon.net or 301-526-4303 (cell).



## Fall Archeology Dig – Members and Families Welcome

The Archeology Committee will host two digs this fall. They will be on Sunday, November 10 and Sunday, November 17 (weather permitting). Both days we will explore the Log Cabin area. The digs are from 9:30 to 11:30am. No experience necessary. Please bring garden/work gloves and a small trowel if you have one. We will provide a beverage inside the cabin at the end. As always take precaution against ticks, such as by using Permethrin.

On our property is part of a historic farm that dates from the mid 1700's. The Log Cabin was probably built in 1825 when the property passed to the second owner. During that period, Jessie Hyatt was the overseer. It's believed that he and his family lived in the Log Cabin. Back then it would have been a simple one room building with a small attic. The Willard family took ownership in the late 1800's and that's when it seems a 2-story addition was added.



For this archeology dig we will use a metal detector around the cabin and maybe underneath it as well. Children especially like digging where there is something to find - hence the value of the metal detector. Here is an opportunity to learn the basics of how archeologists search for artifacts and document the discoveries. However, you can't find glass or ceramic with a metal detector, so we may dig a few "blind holes" as well. In addition, the root cellar is one area that we've never explored. So that's on the agenda for anyone so inclined.

Please RSVP to: Archaeology.BCC.IWLA@gmail.com

## Mags for Vets

This is the 7th year we will be able to provide various types of media to our veterans at the Walter Reed National Medical Center.

1. All magazines **must** be clean, dust free, and current, not over six (6) months old
2. All items **must** be tied securely with heavy twine/cord in bundles **NO MORE** than 20 lb. each – clean and dust free boxes/paper bags OK – **NO PLASTIC bags**.

Drop off your donations on or a few days before Sunday, December 8, 2019 (**10:00am at the latest**) and put them on the table in the Board of Governors meeting room (left of front door under windows).

Questions, call Douglas Smith 301 452-5650.

## Envelope Stuffing Party

The Membership Committee is hosting an envelope-stuffing party on Saturday, December 7 from 2:00pm until 4:00pm (3 volunteer hours) to package up all new membership cards and vehicle decals processed to-date.

## CALENDAR OF EVENTS

Date(s)	Activity	Time
<b>NOVEMBER</b>		
Saturday, November 2	Biathlon Practice – R&P Range	7:30am
Saturday, November 2	MCBA Beekeeping Education Class at the Chapter House	9:00am – 4:00pm
Monday, November 4	Scout Troop 496	7:30pm
Saturday, November 9	Biathlon Practice – R&P Range	7:30am
Saturday, November 9	MCBA Beekeeping Education Class at Chapter House	9:00am – 4:00pm
Saturday, November 9	FeederWatch Orientation	10:00am – 12:00 noon
Sunday, November 10	Sporting Clays Winter League	9:00am – approximately 1:00pm
Monday, November 11	Scout Troop 496	7:30pm
Sunday, November 17	Chapter House Cleanup	9:00am – 12:00 noon
Monday, November 25	Scout Troop 496	7:30pm
Wednesday, November 20	Monthly Dinner Meeting	6:30pm
Wednesday, November 20	Board of Governors Meeting	Following the Dinner Meeting
Friday, November 22	Newsletter Articles Due – send to j.lamkin@comcast.net	By End of Day
Saturday, November 23	New Member Tour & Orientation	10:00am – 12:00 noon
Monday, November 25	Scout Troop 496	7:30pm
Saturday, November 30	<b>ALL RANGES CLOSED – OPENING DAY OF FIREARMS SEASON</b>	<b>ALL DAY</b>
<b>DECEMBER</b>		
Sunday, December 1	<b>R&amp;P RANGE CLOSED – FIREARMS SEASON</b>	<b>ALL DAY</b>
Monday, December 2	Scout Troop 496	7:30pm
Saturday, December 7	Holiday Decorating – Chapter Hours	10:00am – 2:00pm
Saturday, December 7	Membership Work Party - Envelope Stuffing Party	2:00pm – 4:00pm
Sunday, December 8	Mags for Vets – Pickup	10:00am
Monday, December 9	Scout Troop 496	7:30pm
Saturday, December 14	Adopt-A-Road – meet in the Chapter House parking lot	8:15am
Saturday, December 14	Christmas Bird Count (Seneca) – Chapter House	7:00am – 12:00 noon
Saturday, December 14	Chapter House Cleanup	9:00am – 12:00 noon
Saturday, December 14	Chapter Holiday Party	7:00pm
Sunday, December 15	Sporting Clays Winter League	9:00am – approximately 1:00pm
Monday, December 16	Scout Troop 496	7:30pm
Wednesday, December 18	Monthly Dinner Meeting	6:30pm
Wednesday, December 18	Board of Governors Meeting	Following the Dinner Meeting 8:30pm
Friday, December 20	January Newsletter articles due – send to j.lamkin@comcast.net	By End of Day
Sunday, December 22	New Member Tour & Orientation	10:00am – 12:00 noon
Saturday, December 28	Private Event – Chapter House	12:00 noon – 5:00pm
<b>JANUARY 2020</b>		
<b>Wednesday, January 1</b>	<b>HAPPY NEW YEAR!</b>	
Monday, January 6	Scout Troop 496	7:30pm
Saturday, January 11	Chapter House Cleanup	9:00am – 12:00 noon
Monday, January 13	Scout Troop 496	7:30pm
Wednesday, January 15	Monthly Dinner Meeting	6:30pm
Monday, January 20	Scout Troop 496	7:30pm
Wednesday, January 22	Board of Governors Meeting	7:30pm
Friday, January 24	February Newsletter Articles due – send to j.lamkin@comcast.net	By End of Day
Saturday, January 25	Annual Conservation Dinner with Speaker	6:00pm
Monday, January 27	Scout Troop 496	7:30pm
The Campground is closed during all black powder and firearms deer season. Check the online <a href="http://www.bcciwa.org">www.bcciwa.org</a> electronic calendar for current and updated scheduled times of events.		

### NEW MEMBER ORIENTATION TOUR

This month's **New-Member Orientation Tour** is on Saturday, November 23 from 10:00am until 1:00pm.

**ALL RANGES WILL BE CLOSED  
ON SATURDAY, NOVEMBER 30  
FOR OPENING DAY OF  
FIREARMS SEASON.**



## Chapter Save Our Streams Program

Dominic D'Ambrosi and John Novak

The Izaak Walton League of America (IWLA) Save Our Streams (SOS) program (<https://www.iwla.org/conservation/water/save-our-streams>) provides a protocol to monitor water quality in local creeks and streams. These protocols are implemented through biological, chemical, and physical monitoring using procedures established by the SOS program. SOS guidance provides that a stream should be monitored from two to six times a year, and it is the goal of the B-CC IWLA to conduct at least one monitoring event each in the spring, summer, fall, and winter. The League's challenge is to monitor 100,000 more stream sites nationwide by 2022.

In May of 2018 several members of our chapter participated in SOS training and became certified stream monitors. The last few months of 2018 we procured biological and chemical monitoring equipment and started to hone our monitoring skills. In April of this year, we conducted biological and chemical monitoring of a stream on our chapter grounds. The results indicated the condition of our stream was rated as fair. This was not due to the chemical composition of the stream, which was very good, but due the scarcity of macroinverte-



brates that we were able to collect. In August a small group of us ventured to Hookers Branch, which feeds into Seneca Creek, for another stream monitoring event. The results were basically the same as our stream, very good chemical water quality with a fair rating for macroinvertebrates. This supports water quality ratings in the area of our chapter, with several area streams rating as poor.

Our initial efforts warrant more inquiry of area stream water quality and we are looking for everyone's assistance in helping our program grow. We anticipate conducting at least one more stream-monitoring event before the year ends and hope some of you will join us. We also are going to start monitoring for salt as part of the League's Winter Salt Watch so we can ascertain the effects to our stream's water due to the use of salt to treat the roads.

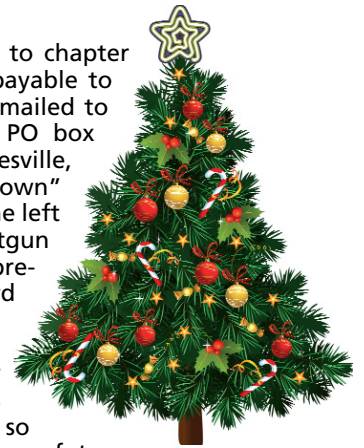
If you would like more information on how to get involved in our Chapter's SOS efforts, please contact me at [dominicedambrosi@yahoo.com](mailto:dominicedambrosi@yahoo.com) or attend our next Ponds and Streams committee meeting or work event.

### NEWSLETTER DEADLINE

Please submit all articles for the December 2019 newsletter  
**NO LATER THAN FRIDAY, NOVEMBER 22.**  
*Early submittal of articles is always appreciated.*

## Christmas Trees

Christmas trees are available to chapter members. Trees are \$30 each, payable to either members of the BOG or mailed to the treasurer at the chapter's PO box (B-CC IWLA PO Box 542, Poolesville, MD 20837). Trees are "cut your own" and are located in the field on the left along the drive towards the shotgun range. Many trees are already pre-decorated with items like bird nests and mantis cases, no extra charge. There are many small trees planted in the rows by our members during work days which may not be easily visible, so please step carefully around of our future crop. Please leave stumps either tall and visible or cut them flush to the ground. Hidden stumps wreak havoc on the mowing efforts. Trimmed branches should be placed in the woods at the bottom of the hill. Any questions, contact Larry Anderson, 240 246-5302, or [andupton9@hotmail.com](mailto:andupton9@hotmail.com).



### B-CC Quiz Answer: Halberd-leaved Rosemallow

The Halberd-leaved Rosemallow has been found in only a few locations in Maryland. The Maryland Natural Heritage Program has put this plant on the state watch list (S3). In Maryland, the main populations occur along the banks of the Potomac River. It also is found in abundance at the B-CC Big Pond. Our Ponds and Streams Committee is transplanting it to the newly restored small pond.



Photo by Bill Hubick Maryland Biodiversity  
<https://www.marylandbiodiversity.com/viewSpecies.php?species=2882>

## Chapter House Holiday Decorating

On Saturday, December 7, we will be decorating the Chapter House for the upcoming Holiday Season. The decorating will start at 10:00am. We are in need of people to decorate inside and outside.



## Membership Report

Tucker Mostrom, Committee Chair  
301 252-8825 membershipsecretary.bcc.iwla@gmail.com

### HAVE YOU SENT IN YOUR 2020 MEMBERSHIP RENEWAL DUES YET!!!

This year, the chapter asked members to return their membership renewals by October 31. Late fees will be assessed for renewals received after December 31. The Board is considering formally moving up the late-fee date to encourage members to get there renewals returned before November each year. Plans are also being discussed to enable online membership renewals through the chapter website.

We have scheduled a membership work party of chapter volunteers for Saturday, December 7 from 2:00pm – 4:00pm to package ALL the 2020 membership cards and decals for renewals received by October 31. **ONLY** renewals received in the chapter's membership box (PO Box 83277 in Gaithersburg, MD) by Halloween will be guaranteed back in members' mailboxes before New Year's Day. There will be NO interim mailings of 2020 membership cards before early December!

If you have NOT received your 2020 renewal invoice yet, contact the Membership Committee immediately at: **MembershipSecretary.BCC.IWLA@gmail.com**.

Chapter volunteers who might want to perform membership tasks at the chapterhouse or remotely (online) should contact the Membership Secretary at **MembershipSecretary.BCC.IWLA@gmail.com**.



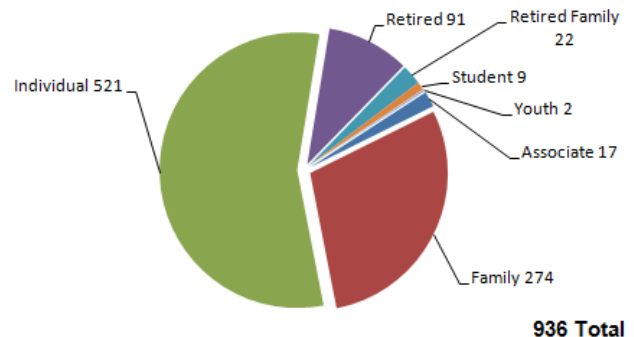
October New Member Orientation Tour

PHOTO BY CHRISTINE PETERSON

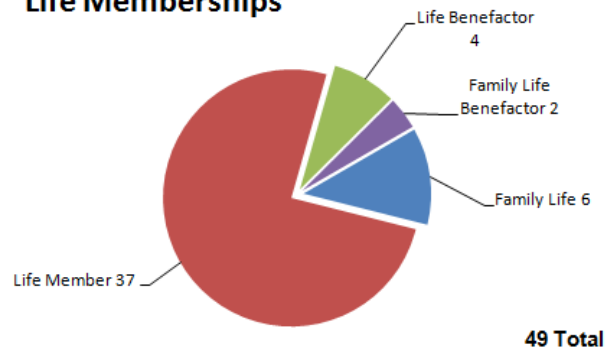
The **New Member Orientation Tour** this month will take place on **Saturday, November 23**.

The active membership breakdown as of the October board meeting is:

### B-CC IWLA Membership Census (936 Total)



### Life Memberships



## Family fun at the Big Pond!



PHOTO BY BRETT DAVIS



# It's Back!

## 50/50 Raffle

at the monthly dinner meeting.

**Help support the Chapter!**

**\$1 per ticket or 6 tickets for \$5**

**50% goes to the ticket holder**

**50% goes to the Chapter**

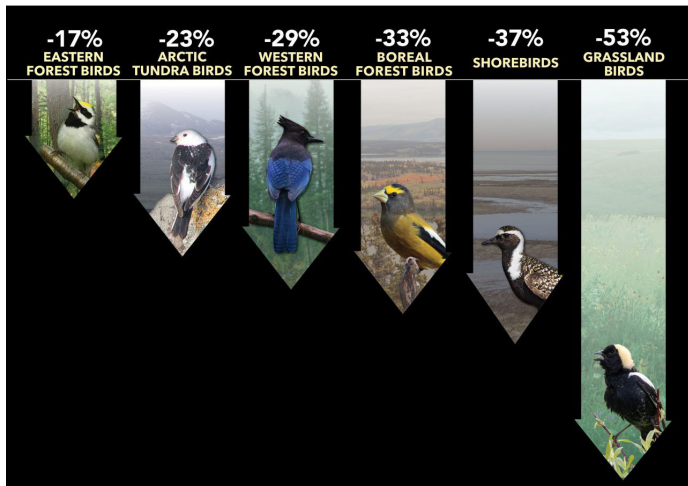


## For the Birds: Each Year Billions Immigrate Without Documentation Across our Borders.

Jim Tate  
202 841-2056 jim@tate-tate.us

I mean birds of course. As Diane Seward noted last month in her **FeederWatch** announcement, there are billions fewer birds living in the United States than fifty years ago.

The **Conservation Farm Guide Book (CFGB)** mentions that there are about 10,000 known bird species in the world, 400 in Maryland, and 200 on the Conservation Farm. More are added on the Conservation Farm every year through our **Wildlife Counts** program.



It is harder to know how many individual birds there are of each species. The CFGB estimates 15 – 20 billion individual birds at the end of each breeding season in North America. That was little better than a best guess- until now.

Last month ornithologists, using radar images and decades of data on bird populations, found that in the last 50 years a quarter of the birds in North America have disappeared. You can see the original article in *SCIENCE* magazine.

Changes caused by mankind; pesticide use, changes to habitat, free-roaming cats, and window strikes are important contributors to the decline in bird populations.

The data show that while all bird populations, in almost every habitat, have suffered, grassland birds populations have dropped the most (53 percent decline). Some species have declined more than others. For example, 6 of 10 Wood Thrushes, 3 of 4 Eastern Meadowlarks, and 9 of 10 Evening Grosbeaks have vanished from the population.

However, conservation efforts have been helped some bird species. The grassland plot on the Conservation Farm has attracted species not recorded here for several years. Turkeys have benefitted greatly from regulated hunting seasons and favorable habitat changes. Bobwhite Quail are just the opposite: declining largely due to unfavorable habitat changes.

Hawks have benefitted largely from regulatory changes and management. Waterfowl and water bird populations in general, have responded a little to regulated take and habitat management from the abysmal lows of the last Century.

The loss of three billion birds is bad news for many species, but there is hope for some when we manage from knowledge and pay attention to bird ecology and habitat.

We will be starting the November to April **FeederWatch** program soon at the B-CC Conservation Farm to add to the data needed to continue to monitor species and populations. Please sign up with our feeder watchers and do your part for conservation. I hope to see you on the B-CC IWLA Conservation Farm, where **Conservation is our Mission**.

### 7 SIMPLE ACTIONS TO HELP BIRDS

1. Make Windows Safe from bird strikes
2. Keep Cats Indoors
3. Reduce Lawns by planting native species of grasses and flowers for pollinators
4. Avoid Pesticide Use
5. Drink Shade-grown Coffee
6. Avoid Single-use Plastics
7. Learn from Nature, Share What You Learn (B-CC NestWatch and FeederWatch)

<https://www.birds.cornell.edu/home/wp-content/uploads/2019/09/DECLINE-OF-NORTH-AMERICAN-AVIFAUNA-SCIENCE-2019.pdf>

## Rifle & Pistol Range Report

Thoran Menser, Committee Chair  
301 972-8353 bcciwla.rp@gmail.com

Chris Efdimis, Chief Range Officer  
240 372-2258 bcciwla.rp@gmail.com

### PLEASE REMEMBER

- Put paper in the trash. If the cans are full, please empty them.
- Keep watch on guests you bring. It is your place to brief them on the SOP's.
- Be safe and enjoy the range respectfully.
- All shooters must **PICK UP THEIR BRASS!**

### RANGE OFFICER SCHEDULE

#### NOVEMBER

Saturday, Nov. 2	<b>Kang, J.</b> , Drummond R., Kang, Y., Yau, T., Kang, M.
Sunday, Nov. 3	<b>Murray, J.</b> , Elkins, B., Rikhter, J., Griffin, J.
Saturday, Nov. 9	<b>Kang, Y.</b> , Kang, J., Drummond, R., Yau, T., Kang, M.
Sunday, Nov. 10	<b>Bryan, K.</b> , Mense, M.
Saturday, Nov. 16	<b>Keller, A.</b> , White, M., Chung, K., Pedersen, P.
Sunday, Nov. 17	<b>Neily, J.</b> , Lowe, C., Hodgson, E., Smith, E.
Saturday, Nov. 23	<b>Hodgson, E.</b> , Kuhnsman, K.
Sunday, Nov. 24	<b>Princiotta, M.</b> , Newsom, D., Mostrom, T., Zinsser, G.
Friday, Nov. 29	<b>Griffin, J.</b> , Bixler, D., Newsom, D.

Friday, November 29, will be the last day of the range being open to the general membership until Saturday, April 4, 2020.

On Saturday, November 30 and Sunday, December 1, the range will be **CLOSED** to all members and Range Officers for the opening of Firearms Season.

## IN MEMORIAM

### STEVEN CARBERRY

B-CC IWLA member Steve Carberry recently passed away; he was a member for many years. Steve was drawn to hunting and fished at an early age. Squirrel, rabbit, and varmint hunting were his true love. He made sure that his grandchildren had the opportunity to experience the outdoors. A celebration of his life was held on Tuesday, November 5.

## Welcome to the B-CC IWLA Family

The following members were inducted at the October dinner meeting:

**Barry Daniel**

**Interests:** Archery; Hunter Education; Wildlife Management

**Cory L. Justice**

**Interests:** Archery; Rifle & Pistol; Trap, Skeet & Sporting Clays

**Ken Kee**

**Interests:** Archery; Rifle & Pistol; Trap, Skeet & Sporting Clays

**Paul Tchorani**

**Interests:** Chapter Activities (Planning, Decorations); Conservation Education, Family Picnic

**Nathan Villiger**

**Interests:** Rifle & Pistol; Trap, Skeet & Sporting Clays; Youth Activities/Scouting

## Shotgun Range Report

Warner Parks, Committee Chair  
240 620-6942 wparks29@gmail.com

### B-CC SPORTING CLAYS WINTER LEAGUE DATES

Sunday, November 10 • Sunday, December 8  
9:00am – 1:00pm

*Please remember that there will be no trap or skeet shooting until the last squad has shot.*

**NOTE:** the Shotgun Range will be closed on Saturday, November 30 for opening day of firearms season.

Range Officers – please double check and make sure all release cords and extension cords are returned to the range house.

Remember to pick up your empty shotgun shells and trash when finished shooting. Keep the range clean and restocked for the next range officer and shooters.

All Shotgun Range Equipment is to be used by pre-qualified Shotgun Range Officers **ONLY**. If any equipment is malfunctioning, please let Joel or me know ASAP.

### RANGE OFFICER SCHEDULE

#### NOVEMBER

Sunday, Nov. 3	Timothy Jorgensen, John Novak, Shannon Novak
Sunday, Nov. 10	Rick Tomlin, Bill Keller, John Frick
Sunday, Nov. 17	Steven Kirsten, Keith Fungler
Sunday, Nov. 24	Joseph Contrera, John Frick
<b>Saturday, Nov. 30</b>	<b>RANGE CLOSED FOR FIREARMS SEASON</b>

#### DECEMBER

Sunday, Dec. 1	Philip Groven, Joe McGovern
Sunday, Dec. 8	Keith Fungler, George Hodges-Fulton
Sunday, Dec. 15	Steven Kirsten, George Hodges-Fulton
Sunday, Dec. 29	Mike Noble, Fred Ryan

### HOURS OF OPERATION

Sundays 9:00am to 5:00pm Trap, Skeet & Sporting Clays

## MEMBERSHIP DINNER MEETING

The 1,009th dinner meeting will be held on **Wednesday, November 20** at the B-CC IWLA Chapter House. Dinner will be served beginning around 6:15pm. All members and guests are invited.

Appetizers will be available before dinner. Dinner this month will include Salad, Pit-Roasted Pork Loin, Au Gratin Potatoes, Vegetables, Rolls, Lemonade, and Dessert.

## BOARD OF GOVERNORS MEETING

The Board of Governors meeting will be held at the B-CC IWLA Chapter House on **Wednesday, November 20 immediately following the Dinner Meeting**. Board Members are expected to attend.



## Join Us in January!

### Annual Conservation Dinner

Andy Wight, Conservation Education Committee Chair  
andywight1@hotmail.com

Every year in January the Conservation Education Committee holds a free spaghetti dinner with a speaker who addresses some aspect of Conservation. This year the dinner is scheduled for January 25, 2020. Dinner starts at 6:00pm and the speaker will begin around 7:00pm.

Bill Harvey, Game Bird Section Leader, Department of Natural Resources will present on the North Eastern Woodcock Migration Study. Our chapter has contributed to this study through our Rough Grouse Society annual donation. Dave Hansroth, RGS Regional Director, Potomac Valley Chapter will co-host and introduce Bill Harvey.

The Conservation dinner is open to the general public as part of our 501(c)3 commitment. Please invite your friends and acquaintances that have an interest in conservation. We have extended an invitation to the RGS Members of the Potomac Valley Chapter.

Contact Andy Wight, Conservation Education Committee Chair, andywight1@hotmail.com, if you need more information or can help with the planning and set up, the preparation of the spaghetti dinner, serving, and cleanup.

### I was asked why I have contributed to the B-CC IWLA Land Fund for over 20 years?

*Tom Sigman*

I contribute to ensure my grandchildren will have a place to shoot and hunt. I contribute to the B-CC IWLA Land Fund to protect our conservation farm from the total detrimental effects of development on our boundaries. When I look at my grandchildren and think about how much more development will take place during their life time, I am concerned about their future opportunities to experience a natural environment of woodlands, ponds and streams, and open fields. I contribute to help protect my chosen life style and system of values. I contribute for my family, your family and most particularly for the families of the B-CC IWLA that will benefit from my contributions as my family has benefited from the contributions of those that went before me. I have witnessed the tremendous power of our chapter's Land Fund to accomplish what others only dream of, the purchase of surrounding property.

### 2019 Land Fund

As a member of the B-CC IWLA, I want to do my part and contribute the following amount to the B-CC IWLA Land Fund Campaign.

Name \_\_\_\_\_

Address \_\_\_\_\_

City \_\_\_\_\_ State \_\_\_\_\_ Zip \_\_\_\_\_

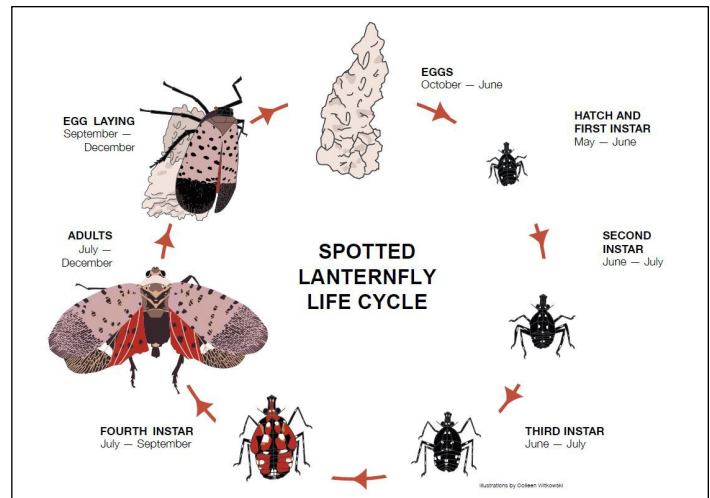
\_\_\_\_\_ \$50    \_\_\_\_\_ \$100    \_\_\_\_\_ \$200    \_\_\_\_\_ \$500    \_\_\_\_\_ \$1000    \_\_\_\_\_ OTHER

*Your contribution is tax deductible.*

Please mail contribution form and check (written out to B-CC IWLA) to B-CC IWLA, PO Box 542, Poolesville, MD 20837

## Spotted Lanternfly

The invasive and potentially destructive Spotted Lanternfly has been found in Maryland, in the Harford and Cecil counties. A quarantine has been put in place restricting the movement of regulated articles to try to stem the spread of this pest. Examples of regulated articles include landscaping, remodeling, or construction waste; packing materials like wood boxes or crates; plants and plant parts; vehicles; and other outdoor items. If you suspect you have found a spotted lanternfly, snap a picture of it, collect it, put it in a plastic bag, freeze it, and report it to the Maryland Department of Agriculture at [DontBug.MD@maryland.gov](mailto:DontBug.MD@maryland.gov). Dead samples from any life stage can be sent to the Maryland Department of Agriculture Plant Protection and Weed Management Program at 50 Harry S. Truman Parkway, Annapolis, MD 21401. More information can be found at: <http://www.nottinghammd.com/2019/10/28/md-department-of-agriculture-issues-spotted-lanternfly-quarantine-in-cecil-harford-counties/>.



## Family Campout

On Saturday, October 26, the Conservation Education Committee, headed by Andy Wight, held the annual Fall Family Campout at the conservation farm. Over thirty children and their respective families came out, set up their tents on the Chapter House lawn and made the most of the mild autumn day. Nearly everyone rode the Phil Taylor hay wagon shuttle to the big pond to try some fishing. Thanks to the efforts of the Ponds and Streams Committee, the big pond was the perfect place for even the smallest of the campers to cast a line. John Novak, Pete Wirth and Nona Colburn helped the newer anglers with baiting hooks. Brett Davis, Mike Spencer, and Guy Weigold assisted with casting and un-hooking fish. Several kids caught their first fish on Saturday. Campers also rode the wagon to the pumpkin patch ("planted" the night before by Phil Taylor and Jack Mandel with pumpkins donated by our friends from NAVHDA). The younger campers picked out pumpkins, which they later painted for Halloween. As the last wagon-riders made their way back up the hill toward the Chapter House, a dinner of hotdogs and burgers (chef Mandel) was served at the bar. Carol Efdimis's apple crisp made everyone happy. After dinner, campers could visit the haunted cabin, where some creepy surprises awaited, thanks to the work of Jack Kang and his crew of production assistants. Some sat around the fire pit while others played laser tag and others explored the grounds in the dark with their light sticks. Later in the evening, a monster from the cabin paid a surprise visit to the crowd at the fire pit, causing some to scatter in horror. When the true identity of the monster was revealed, however, all was well. Campers went to bed late and happy.

Thanks to Andy Wight, Carol Efdimis, John Novak, Pete Wirth, Nona Colburn, Brett Davis (see his photos), Mike Spencer, Guy Weigold, Phil Taylor, Jack Mandel, Jack Kang and his pranksters, and Chapter House Chairman Tucker Mostrom for making a very memorable event. It was a wonderful example of what this Chapter is capable of and what it can offer to children and families.



PHOTOS BY BRETT DAVIS





PHOTOS BY BRETT DAVIS



## Wildlife Report

Larry Anderson, Committee Chair  
240 246-5302 andupton9@hotmail.com

Deer firearms (shotgun) season start on November 30 and runs through December 14, a late season this year. We ask that all hunters be safe and courteous, read and follow our rules and respect all property lines. B-CC IWLA chapter website has our updated rules and a variety of methods to distinguish our property lines. The Chapter's Trail Guide on the website is a good way to familiarize yourself with the trails and the boundaries of our Conservation Farm. All members intending to hunt on our farm must acknowledge that they have read our rules and understand where our property lines are by registering on our website. This is an yearly requirement. It is recommended that during the deer firearms, all members and guests while out on the farm wear some highly visible clothing, hunter orange or pink is preferred.

We do not have permission to hunt or go on any of our neighbor's properties. In the event that you wound an animal and it expires on the property owned by Joe Morin, located to the north and west of our farm on several different boundaries, or the property owned by Vikki Van Winkle, located north of the NE Woods, you may enter their property only after calling them and asking permission. You must not enter their properties with a weapon of any kind. **Joe Morin** (301 674-5397), **Vikki Van Winkle** (301 379-3560).

Our farm is considered private property (MD-DNR land code 430 for harvest check in), so your current valid membership card is used as the written permission to hunt as required by MD DNR and must be carried along with your valid hunting license. Also, a current B-CC IWLA chapter vehicle decal must be visible on all vehicles on the farm. We ask that deer and turkeys taken on our farm be recorded either in our game logbook, located outside the chapter house's main door or by sending an email to andupton9@hotmail.com. When reporting your deer (or turkeys), we ask for the following information; your name, doe or buck (antler count), date and weapon used and the total number of ticks found on the ears of your deer. Other details may also be included such as estimated weight or unusual features.

Two bucks may be taken statewide throughout the entire hunting year, only one of which can have less than three points on an antler. Only one buck may be taken in a weapon year. A bonus buck may be taken in region B (our region) after purchasing a bonus buck stamp and can be used for any weapon season, still maintaining the antler point restrictions. The requirement to harvest two does prior to using the bonus buck stamp has been removed. Baiting for hunting purposes is now prohibited on our farm.

Bears are protected in Montgomery County, and we adhere to the policies setup by MD DNR. We ask that all of our members be aware of the possibility of encountering a bear does exist while on our farm.

**Catch a Poacher 24 Hour Hotline**  
**1 800 635-6124**

Citizens who supply Maryland Natural Resources Police with information leading to the arrest and conviction of a poaching violator are eligible to receive cash rewards. Give names, addresses, vehicle descriptions, and as much information as possible. The anonymity of the caller is guaranteed.

**To report nuisance, injured or sick wildlife**  
**(Monday – Friday, 8:00am – 4:30pm)**  
**Call Toll-free in Maryland: 1 877 463-6497**

## VOLUNTEER OPPORTUNITIES

### **November Chapter House Cleanup** **Saturday, November 17**

9:00am – 12:00 noon  
Contact Tucker Mostrom at  
Chapterhouse.BCC.IWLA@gmail.com.

### **Monthly Dinner Meeting** **Wednesday, November 20**

Contact Chip Dunn, cdunn20842@aol.com, if you can help with food preparation, setup, and/or cleanup.  
1:00pm setup start time.

### **Holiday Decorating** **Saturday, December 7**

10:00am – 2:00pm  
Decorating help is needed both inside and outside the Chapter House. Contact Carol Efdimis at carol2017@aol.com.

### **Membership Work Party** **Saturday, December 7**

2:00pm – 4:00pm  
Package 2020 membership cards, decals, etc., to drop off at the post office. Contact Tucker Mostrom, MembershipSecretary.BCC.IWLA@gmail.com

### **Holiday Party** **Setup** **Friday, December 13**

5:00pm – 8:00pm

### **Adopt-A-Road Cleanup** **Saturday, December 14** Contact John Robinson at 301 641-1188

### **Holiday Party** **Cleanup** **Sunday, December 15** 12:00 – 2:00pm Contact Carol Efdimis, carol2017@aol.com.

### **Conservation Speakers Dinner** **Saturday, January 25, 2020** 6:00pm Contact Andy Wight at andywight1@hotmail.com if you are able to help with the planning, setup and cleanup.

## ★★ ATTENTION HUNTERS ★★

**Tree stands, blinds, or any other material that might "save" a location for a hunter must not be left out on chapter grounds overnight.**



**2020 IWLA National Convention**  
**July 20 to 22, 2020**  
**Early Bird – July 19, 2020**



### **Hyatt Regency Chesapeake Bay Hotel**

100 Heron Blvd. at Route 50, Cambridge, Maryland 21613

Phone: 800-323-7249

email: [conciergechesa@hyatt.com](mailto:conciergechesa@hyatt.com)

[www.hyattregency.com](http://www.hyattregency.com)

The Hyatt Regency Chesapeake Bay Golf, Resort, Spa and Marina is the ideal setting to work or play by the bay! Reconnect with family, friends, colleagues, and nature. Explore the 342 acres situated on the Choptank River with a 150-slip full service marina. At the resort you have an: 18-hole golf course, three swimming pools – two indoor and one outdoor, tennis courts, sand volleyball, mini golf, disc golf, Sago Spa and Salon, and five on-site restaurants.

Other attractions include: charter boat fishing in the Chesapeake, sea kayaking, sporting clays, bird watching.

### **\$165/night (group rate)**

**This rate is over 50% off the normal rate.**

**Plus Free Parking, RV Parking, and No Resort Fee**

The IWLA group room rate applies three days before and three days after the convention, but rooms availability is only guaranteed for the three days of the convention and not for the three day extended periods before and after the convention. The Cambridge Hyatt Regency is a very popular luxury resort that normally sells out well before the beginning of the summer season, and if you are planning to stay at the hotel during one of the extended periods, you should make your reservation now, while rooms are available. Note: Most people arrive a day before the convention to attend the Early Bird social event held the night before the convention.

### **Nearby Attractions and Activities**

- Blackwater National Wildlife Refuge
- Harriet Tubman Museum
- Phillips Warf Environmental Center
- Pickering Creek Audubon Center
- Tilghman Island
- St. Michaels

Extend your vacation at our Atlantic beach resort of Ocean City, MD or explore Chincoteague Island and its famous wild ponies. Whatever you choose please join us to play, relax, and discover Maryland's Chesapeake.



**For reservations:**

**800-323-7249**

<https://www.hyatt.com/en-US/group-booking/CHESA/G-IWLA>