



DECEMBER 2022 NEWSLETTER

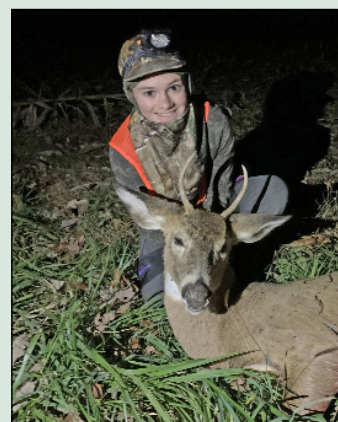
The Bethesda-Chevy Chase Chapter of The Izaak Walton League of America

Serving the Community Since 1935
PO Box 542, Poolesville, MD 20837 • www.bcciwla.org

President's Message

Our outdoor heritage is important to all of us, but the activities we enjoy can be vastly different. Collectively, we Ikes have a passion for fishing, hiking, birdwatching, shotgun, archery, rifle and pistol shooting, camping, hunting, and many other outdoor activities. While each of us may not participate in every outdoor activity, we can appreciate them all and that is what brings us together. When you get to be a certain age, perhaps when you have almost as many grey hairs as Santa Claus, it becomes increasingly less important to go afield alone and unencumbered, and increasingly more important to pass along your knowledge to others. At the time of this writing the Montgomery County deer shotgun season is upon us, late muzzleloader season is coming up, and serious goose hunting is about to begin. These outdoor hunting activities provide ideal opportunities to introduce others to our beloved shooting sports. There is no question that the investment of time required to steer a hunter to their first harvest will reduce our own opportunity. Repeated trips to the range to practice shooting are a must, and time with a trusty .22 or 20-gauge scatter gun will build shooting skills to a new hunter without breaking the bank. Once they are ready, we then need to find just the right weather and location to get them close enough to game to seal the deal. If the novice is frozen, soaked, or bored to tears, they are much less likely to get bitten by the bug... there is plenty of time to face more adverse conditions later. Such was the case with my youngest grandson, Gavin, 12, who prepared under my tutelage for the month preceding the deer shotgun season. It all came together on the relatively balmy afternoon of shotgun season's opening day, and he was rewarded with a good shot and a fine spike buck for his first deer. He also learned the life-skills of field dressing and butchering his deer. I'm also mentoring a member of the League who has yet to get her first deer, but has had several close shaves with success! I belong to a suburban hunting group where we started an apprentice hunter program, and a member's 16-year-old daughter has harvested two deer under this program with a bow. So where is this going, you might ask? The hope is that these stories will inspire you to take someone under your wing, show them the ropes, and get them outdoors! Their success is also your success, and it is very gratifying. Getting people hooked on the outdoors will assure the future of our hunting sports and The League, and that is a heritage well worth saving.

Walt Allensworth
President



TREES FOR FISH

Chapter members, here is an opportunity to help the fish population in the small pond and big pond by contributing your Christmas tree after the holiday season. These trees will be weighted and sunk in both ponds next spring for habitat structure. So, if you want to help, please bring your discarded Christmas tree to the chapter and place it to the left of the road leading to the shotgun range. A sign will be placed at this location. Thanks in advance for your help in contributing to the enhancement of the fish population in both ponds. If you have any questions, please contact John Novak at novakgang4@comcast.net or Pete Wirth at peter_wirth@verizon.net.

Board of Governors

Fiscal Year: September 1, 2022 – August 31, 2023

OFFICERS

Walt Allensworth, President

301 221-3594 • twangermd@gmail.com

Carol Hulce-Efdimis, 1st Vice President

240 277-2494 • carol2017@aol.com

Andy Wight, 2nd Vice President

240 205-3982 • andywight1@hotmail.com

Bob Kelly,* Treasurer

202 445-7097 • rnkelly1974@gmail.com

Meg O'Rourke, Membership Secretary

301 275-5907 (text)

MembershipSecretary.BCC.IWLA@gmail.com

Janet Lamkin, Corresponding Secretary

301 466-6557 • j.lamkin@comcast.net

Francis (Jerry) Murray, Recording Secretary

202 438-4202 • jerrym5@comcast.net

BOARD MEMBERS

Deborah Behrend

301 922-1174 • drbehrend@aol.com

Marc Bouchard

202 906-9406 • combat750@gmail.com

Dan Dutton

540 558-8253 • mr.dutton.CBGS@gmail.com

Joe Finnegan

202 679-9135 • j.finnegan@comcast.net

Kenny West

301 758-3978 • west372ken@yahoo.com

Lin Schmale-Tate, Past President

703 517-3675 • lin@tate-tate.us

* Indicates Officers and Board Members who were absent from the previous month's Board of Governors meeting.

The Izaak Walton League of America – a non-profit conservation organization – is recognized as a Section 501(c)(3) public charity under the Internal Revenue Code.

Address, phone and email changes should be sent to the Membership Secretary at the above address.

Submissions to the *NEWSLETTER* should be sent to:

Janet Lamkin
j.lamkin@comcast.net
301 466-6557



Summary of the October 2022 Board of Governors Meeting and the November 2022 Membership Meeting

Jerry Murray, Recording Secretary, 2022-2023

202 438-4202 jerrym5@comcast.net

Wednesday, October 26, 2022 – Board of Governors Meeting

- President Walt Allensworth called the meeting to order at 7:00pm.
- President's Report: Our 501c3 qualification letter has been received and National will need updates on our conservation activities in order to maintain our status.
- Advance Planning & Finance Committee: There are several Chapter House maintenance items that are a priority and will need action soon.
- President Walt Allensworth has completed (and passed) the Food Service Manager course and is certified. Still looking for more members to take the course.
- Eagle Scout Project: A scout in Troop 496 requested permission to repair and refurbish the picnic tables (15) around the chapter house as his Eagle Scout project. He will have an adult mentor to help and to use any power tools that may be necessary to perform the work. He estimates the project will take 2 to 3 days and his goal is to complete the work by April. He provided a written summary of the project to the board.
- Deborah Behrend and Marc Bouchard have agreed to be part of an ad-hoc Budget Review Committee with Bob Kelly to perform the review as required in our bylaws.
- Byron Rickets will continue as Bylaws Committee chair and they will start work after November.
- Meg O'Rourke, Membership Committee Chair, is looking for some help on the committee with recruitment of new members using social media and reaching out through local papers and community events. A strong knowledge of Excel and virtual basic would be useful.
- There have been more bear sightings, looks like we have at least two bears using the farm. The bears have not disturbed them yet but we may want to look into bear proof dumpsters.

NEW BUSINESS:

- Motion was made to approve and fund an Eagle Scout project to refurbish the picnic tables around the chapter house. The motion was seconded and passed.
- Motion was made to fund the balance of the Archery Range Well House replacement and relocation of plumbing fixtures. The motion was seconded and passed.

TALKS FOR THE GOOD OF THE CHAPTER:

- Annual Land Fund Telethon is in December. Please help out and encourage others to donate.
- Revive the 50-50 raffle at the dinner meetings to generate some additional income for specific projects. Winner must be present at the drawing.

The meeting was adjourned at 9:30pm.

Wednesday, November 16, 2022 – 1,045th Dinner / Membership Meeting

- President Walt Allensworth called the meeting to order at 7:30pm.
- President's Report: We are still in need of volunteers to help in preparing the dinners. This does not have to be a long-term commitment; cooking or assisting in the preparation of even one dinner would be helpful. Please contact

(continued on page 3)

SUMMARY

(continued from page 2)

Jack Mandel, Scott Harmon or Walt Allensworth if you can help. We have revived the monthly 50/50 dinner raffle with the chapter's portion of the proceeds going toward the replacement of the Adirondack chairs around the chapter house.

- **Land Fund Drive:** Butch Mezick passed out pledge forms and talked about the importance of the Land Fund and how it has helped our chapter grow. The fund was started in 1994 in order to have funds available for the purchase of adjacent property when it comes up for sale. Over the years the fund has received over 1 million dollars in contributions, which has been used to purchase over 300 acres of additional land for the chapter. The money that is donated to the fund is tax deductible (you will receive a letter from the chapter acknowledging your gift) and is used solely for the purchase of additional land. The purchase of adjacent land is critical to maintaining the chapter's many outdoor recreational activities and providing a buffer to future development.
- Fifteen prospective members introduced themselves and described their main interests. Four new members were sworn in.
- Larry Anderson, Wildlife Management Chair, reminded everyone that they must be a full member to hunt the property and must have signed up and have their membership card with them. Five deer have been taken on the property so far this season.
- Blaine Elkins, Chestnut Grove Chair, said there are some hybrid chestnut seedlings available for planting if anyone wants one (or some). He then gave a brief discussion on how to plant them and the importance of the hybrids in keeping chestnut trees around. He will be planting about 40 new seedlings in the new orchard and could use some help. Please contact him.
- David Mecklenburg reported that he has six active hives in the new aviary enclosure.
- Jack Mandel, Archery Range Chair, reported that they want to expand the kid's archery program, and he is looking for some people to help out.
- John Lamb reminded everyone that the next Hunter Safety course will be the first week in May and on-line sign-up will start January 1st. He also said that Maryland has an apprentice license that allows you to hunt prior to taking the class. He then discussed the **No.1 complaint about hunters in Maryland: Trespassing, No.1 cause of hunting accidents: Tree stand falls, No.1 cause of outdoor fatalities: Hypothermia.**

TALKS FOR THE GOOD OF THE CHAPTER:

- Walt Allensworth talked about an informal deer butchering class that was held on October 29 that Jack Mandel coordinated. Some of the scouts that were here that weekend attended and it was very informative. If anyone is interested contact Jack Mandel.
- Mark Gochnour talked about the recent visit to the chapter by the Global Ecology students. They had about 90 students come by in 2 groups and took them around the farm and talked with them about the woods, animals, and being surrounded by nature. We have been working with the program for about 10 years and during that time we have been able to contribute to the education of over 1,000 students by having them come out to the farm.

The meeting was adjourned at 8:30pm.



It's Back!

50/50 Raffle

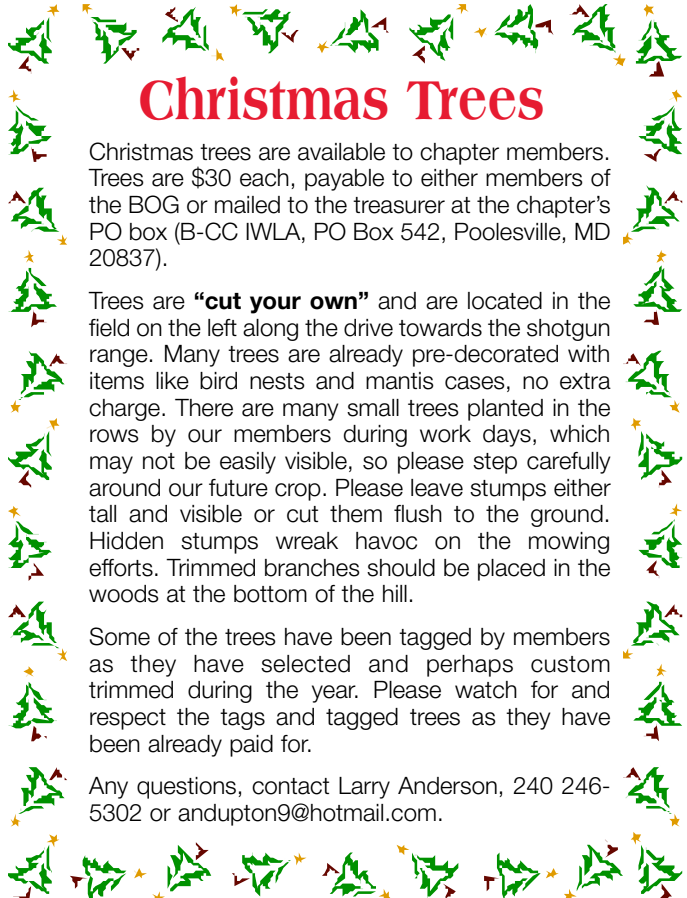
at the monthly dinner meeting.

Help support the Chapter!

\$1 per ticket or 6 tickets for \$5

50% goes to the ticket holder
50% goes to the Chapter

(help purchase new Adirondack chairs for the Chapter House porches)



Christmas Trees

Christmas trees are available to chapter members. Trees are \$30 each, payable to either members of the BOG or mailed to the treasurer at the chapter's PO box (B-CC IWLA, PO Box 542, Poolesville, MD 20837).

Trees are **"cut your own"** and are located in the field on the left along the drive towards the shotgun range. Many trees are already pre-decorated with items like bird nests and mantis cases, no extra charge. There are many small trees planted in the rows by our members during work days, which may not be easily visible, so please step carefully around our future crop. Please leave stumps either tall and visible or cut them flush to the ground. Hidden stumps wreak havoc on the mowing efforts. Trimmed branches should be placed in the woods at the bottom of the hill.

Some of the trees have been tagged by members as they have selected and perhaps custom trimmed during the year. Please watch for and respect the tags and tagged trees as they have been already paid for.

Any questions, contact Larry Anderson, 240 246-5302 or andupton9@hotmail.com.

December 2022 1,046th Monthly Dinner/ Membership Meeting

Wednesday, December 21

Dinner served starting at 6:15pm
Membership Meeting starts at 7:30pm

Menu

Appetizers will be available before dinner

Beef/Pork Chili, Jalapeño Cornbread,
Vegetables, Dessert

December 2022 Board of Governors Meeting

Wednesday, December 21

(Immediately following the December
Membership Meeting)

Interested in becoming a beekeeper or learning about beekeeping?

Honey bees are one of the key pollinators of our gardens, foods, and recreational landscapes. Products of the hive (honey and wax) can be a source of supplementary income. However, keeping bees is much like keeping livestock – it takes planning and commitment to keep a colony of 50,000 insects healthy and productive.

The **Montgomery County Beekeepers Association (MCBA)** has opened registration for its "Beekeeping 101" class, which begins on February 2, 2023. The class includes six two-hour virtual sessions taught by experienced beekeepers via Zoom on Thursday evenings, as well as two in-person sessions at its Brookside apiary in March and April. Post-class learning continues with monthly educational programs, monthly mentoring sessions at the Club's apiary, and "Bees After Hours," a monthly online discussion group for new beekeepers. Class details and registration information at:

Montgomery County
BEEKEEPERS
Association

<https://montgomerycountybeekeepers.com/>

Questions? Maureen Jais-Mick at
301-801-6253 or jaismick1@verizon.net

Article submitted by B-CC IWLA Member Tracy Waterman.

New-Member Orientation Tour

- The next tour will take place on **Sunday, December 18** from 10:00am to approximately 12:00 noon.
- Meet Christine Peterson at the Chapter House.
- The front gate will be open until the tour begins.
- New members, prospective members, and current members are invited to take the tour.

Log Cabin Committee Report

David Mecklenburg, Chair
dmecklenburg1@gmail.com

I would like to thank all who came out to Fall Clean Up, especially those that helped at the log cabin. The cabin needed a good cleaning and some maintenance. The cleaning was done, and the crew went above and beyond, exceeding my expectation on maintenance that was performed. The lower windows were all reglazed, the attic and porch floor were repaired, much of the brush around the cabin cleared, and more. Thank you! There are a few other projects that need to be addressed at the cabin and we will be participating in the monthly workdays.



According to the information we have, the cabin was built in 1825 which means it will be 200 years old in a couple of years. I feel this is a good reason to do what we can to preserve it as best we can. There are very few structures in the county from this time.

Lost and Found

Missing item – metal ramrod to a flintlock shotgun, 30 inches long, 3/8" in diameter. Possibly in archery woods, in the field up to the chapter house by the crop plot, or in the woods/field to the north of the R&P range to the west of the Nature Trail. If found, please contact Mark Gochnour – mgdonutman@gmail.com. **\$25 reward.**

Welcome to the B-CC IWLA Family!!

The following members were inducted in November 2022:

Scott Conlon

Interests: Archery; Rifle & Pistol; Wildlife

Patrick Herald

Interests: Rifle & Pistol; Skeet & Trap; Wildlife

Brendan McCarthy

Interests: Farming; Forestry; Rifle & Pistol

Odysseas Roussos

Interests: Nature Trail; Photography; Wildlife



CALENDAR OF EVENTS

All dates are tentative and subject to change. Check the website for updates.

Monthly Events

<i>Saturdays & Sundays</i>	<i>FeederWatch Season – Inside Chapter House</i>	<i>8:00am – 4:00pm</i>
<i>Sundays</i>	<i>Shotgun Range – Trap, Skeet, and Five-Stand</i>	<i>9:00am – 4:00pm</i>
<i>Mondays</i>	<i>BSA Scout Meetings in the Chapter House</i>	<i>7:30pm – 9:00pm</i>

DECEMBER

Saturday, December 3	Decorate for Upcoming Holiday Season	10:00am – 2:00pm
Sunday, December 4	Pack 694 Den Meeting	3:30pm – 5:30pm
Tuesday, December 6	Pack 694 Den Meeting	7:00pm – 8:00pm
Wednesday, December 7	Pack 694 Den Meeting	6:00pm – 7:00pm
Thursday, December 9	Pack 694 Den Meeting	5:30pm – 9:00pm
Saturday, December 10	Adopt-A-Road Cleanup – meet at the Chapter House parking lot	8:15am
Saturday, December 10	Chapter Holiday Party – pot luck appetizer / dinner	Starting at 6:30pm
Sunday, December 11	Shotgun Range Officer Signup Meeting – Chapter House	9:00am
Saturday, December 17	Chapter House Cleanup	9:00am – 12:00 noon
Sunday, December 18	Christmas Bird Count – early morning Chapter House	6:30am – 12:00 noon
Sunday, December 18	New-Member Orientation Tour	10:00am – 1:00pm
Monday, December 19	Pack 694 Den Meeting	7:30pm – 9:00pm
Wednesday, December 21	1,046th Membership Dinner Meeting	Dinner – 6:15pm Meeting – 7:30pm
Wednesday, December 21	Board of Governors Meeting	Following Dinner Meeting
Friday, December 23	Articles for January Newsletter due – send articles to j.lamkin@comcast.net	By End of Day

JANUARY 2023

Sunday, January 1	Archery, R&P, and Shotgun Ranges OPEN	9:00am - 4:00pm
Sunday, January 1	New Year's Day Pajama Brunch (pajamas optional)	Starts at 11:00am
Wednesday, January 18	1,047th Membership Dinner Meeting	Dinner – 6:15pm Meeting – 7:30pm
Saturday, January 21	Chapter House Cleanup	9:00am – 12:00 noon
Saturday, January 21	New-Member Orientation Tour	10:00am – 1:00pm
Wednesday, January 25	Board of Governors Meeting	7:30pm
Friday, January 27	Articles for February Newsletter due – send articles to j.lamkin@comcast.net	By End of Day

FEBRUARY

Saturday, February 4	Shotgun Range Officer Course – signup required – see Newsletter page 9	10:00am
Sunday, February 5	NAVHDA Annual Meeting – Chapter House	1:00pm – 4:00pm
Wednesday, February 15	1,048th Membership Dinner Meeting	Dinner – 6:15pm Meeting – 7:30pm
Saturday, February 18	Chapter House Cleanup	9:00am – 12:00 noon
Saturday, February 18	New-Member Orientation Tour	10:00am – 1:00pm
Wednesday, February 22	Board of Governors Meeting	7:30pm
Friday, February 24	Articles for March Newsletter due – send articles to j.lamkin@comcast.net	By End of Day

MARCH

Sunday, March 5	Returning R&P – RSO Signup	9:00am – 11:00am
Saturday, March 11	Returning R&P – RSO Signup	8:30am – 11:00am
Saturday, March 11	Rifle & Pistol Range Open with RO's	12:00 noon – 4:00pm
Sunday, March 12	Spring Interpretive Walk in the Woods	1:00pm – 3:30pm
Wednesday, March 15	1,049th Membership Dinner Meeting	Dinner – 6:15pm Meeting – 7:30pm
Saturday, March 18	Chapter House Cleanup	9:00am – 12:00 noon
Saturday, March 18	New-Member Orientation Tour	10:00am – 1:00pm
Saturday, March 18	Rifle & Pistol Range Open with R/O's	12:00 noon – 4:00pm
Wednesday, March 22	Board of Governors Meeting	7:30pm
Friday, March 24	Articles for April Newsletter due – send articles to j.lamkin@comcast.net	By End of Day
Saturday, March 25	Archery Range Cleanup Day	8:30am – 3:00pm
Saturday, March 25	Muzzleloader Day	9:00am – 4:00pm

The Campground is closed during all black powder and firearms deer season.

Izaak Walton League of America Celebrates 100 Years



Below is the link to an article, "Izaak Walton League of America Celebrates 100 Years," that was written by Patrick Durkin and published in the December 2022 *NRA American Hunter* magazine and can also be viewed online.

<https://www.americanhunter.org/content/izaak-walton-league-of-america-celebrates-100-years/>

In the article, Scott Kovarovich, Executive Director of the IWLA, discussed how the IWLA "believes people, programs and traditions are its greatest strengths," and, "all share a deep, common interest in safeguarding our country's natural resources."

Scott spoke about some of National's accomplishments over its first 100 years including persuading Congress to create the Upper Mississippi River National Wildlife and Fish Refuge, a "bird stamp" which became the Migratory Bird Hunting Stamp Act, as well as leading the push to pass the Pittman-Robertson Wildlife Restoration Act, a hunter-safety program called "Red Hat Day", the Land and Water Conservation Fund, as well as the Great American Outdoors Act.

Interesting and informative article – check it out if you get a chance.



Durkin, Patrick. "Izaak Walton League of America Celebrates 100 Years." *NRA American Hunter*, Dec. 2022, pp. 24-25, www.americanhunter.org, <https://www.americanhunter.org/content/izaak-walton-league-of-america-celebrates-100-years/>

Link to article submitted by B-CC IWLA Member Mark Gochnour.

DRIVING ON CHAPTER PROPERTY

Privately owned vehicles are to remain on the main Chapter roads at all times. They are NOT allowed to drive through the fields or park in open areas. This includes no vehicle traffic to the back pond or in the fields unless the vehicle is in use in conjunction with a project being overseen by a Chairman or Committee.

Apiary Report

David Mecklenburg
dmecklenburg1@gmail.com

As many of you may know we have black bears on our property. Last year a bear found Bee Bob's bees and destroyed the hives. This is quite a blow to a beekeeper as the hives are usually killed. The bear is after the bees for food as they are high in protein. The bear will then go after the honey stores.

Bee Bob and the chapter have graciously given me permission to move some of my bees to the apiary at the Chapter. I have been keeping bees for over 10 years and am a longtime member of the Chapter. In preparation to bringing some of my bees to the Chapter during the fall workday, some of the brush was cleared between the apiary and the entrance road. Bees do best with full sun, and this should help with their survivability, as well as allowing our members a better chance to view what is going on in the apiary. I had help putting up a fence and an electric fence around my bees. I would like to thank Larry Anderson, Phil Taylor, Blaine Elkins, and others who helped me with installing the fences. Thanks to all the great work that Phil Taylor and other members have been doing with our Chapter the bees have a great advantage.

The picture shows the apiary as it is now set up with six hives. I hope to add more hives next year.



I look forward to keeping bees on the property and look at the bees as an educational opportunity for the chapter. If you have any questions about the bees, I would be happy to discuss them with you.

Attention Hunters

Tree stands, ground blinds, or any other material that might "save" a location for a hunter must not be left out on chapter grounds overnight.

ATTENTION New Members!

*The next Chapter House cleanup is on
Saturday, December 17
Starting at 9:00am*

Rifle & Pistol Report

Gus Zinnser, Chair
240 750-0979 guszinnser4@gmail.com

Matthew Chambers, Chief Range Officer
202 854-8671 matthewschambers@gmail.com

R&P RANGE IS CLOSED TO THE GENERAL MEMBERSHIP TILL MARCH. ONLY RANGE OFFICERS AND THEIR GUESTS CAN USE THE RANGE.

RANGE OFFICER COURSE

At this time, we are gauging interest in a new Range Officer course. To be eligible to take this course you must:

- be current member of the B-CC IWLA Chapter in good standing who have completed their probationary membership year.
- be 21 years of age
- eligible to legally possess a firearm
- be current in all B-CC IWLA Chapter dues

A list is being created and you will be contacted with significant notice of a date.

If you have not completed your probationary year, please contact us anyway. We will be able to create a list for future classes.

If you are interested in becoming a R&P Range Officer, please contact CRO Matthew Chambers at matthewschambers@gmail.com.

MARKSMANSHIP/HANDS ON SHOOTING CLINIC

On Saturday, November 19, we successfully held our first pistol marksmanship & hands-on shooting clinic. We talked about the fundamentals of pistol marksmanship, including aiming, breathing, grips, stances, etc. Then, we put these to practice on the pistol range.

R&P RANGE TRAINING & EVENTS SURVEY

We ask that members complete the following survey, which will help us prioritize and plan training and events on the R&P Range in 2023:

<https://forms.gle/SpTCuvbX7fpZA3Zc8>

If you have any questions, please contact the Chief Range Officer Matthew Chambers at 202 854-8671 or matthewschambers@gmail.com.

GUEST POLICY

The R&P Range is allowing only 3 guests per member. Members are expected to observe and maintain the safety of their escorted guests. You are responsible for the actions and behavior of your escorted guest. They must observe the principles of safety gun handling and obey the B-CC IWLA Chapter Range Rules.

PLEASE REMEMBER

- Put paper in the trash. If the cans are full, please empty them.
- Keep watch on guests you bring. It is your place to brief them on the SOP's.
- Be safe and enjoy the range respectfully.
- All must **PICK UP THEIR BRASS!**

To report nuisance, injured or sick wildlife
(Monday - Friday, 8:00am - 4:30pm)
Call Toll-free in Maryland: 1-877-463-6497

Interested in becoming a member?

- 1 Start by going to our **BECOME A MEMBER** page.
Here you can download the application and get some basic questions answered.
 - 2 Once your application is completed, email it to:
Applications.BCC.IWLA@gmail.com
 - 3 Attend 2 dinner meetings AND make sure to sign in so we know you are here!
 - 4 Once you have attended 2 dinner meetings, your application will be presented at the next board meeting.
 - 5 Go to the **NEW MEMBER FEES** page and decide which type of membership suits you and your family!
 - 6 Attend your 3rd meeting and get sworn in!
You must attend in person to be sworn in.
- New member tours happen monthly! Check the newsletter for the date. You may attend a tour before you are sworn in!
- Questions?
MembershipSecretary.BCC.IWLA@gmail.com

CAMPGROUND NOTICE

The Campground is closed during all black powder and firearms deer seasons.

Catch a Poacher 24-Hour Hotline

Citizens who supply Maryland Natural Resources Police with information leading to the arrest and conviction of a poaching violator are eligible to receive cash rewards. Give names, addresses, vehicle descriptions, and as much information as possible. The anonymity of the caller is guaranteed.

1-800-635-6124

Register to Hunt

As a reminder ... all chapter members wishing to hunt on our farm must register on the Chapter website to acknowledge understanding our rules and property boundaries. This is a yearly requirement.

<https://bcciwla.org/b-cc-iwla-chapter-hunting-rules/>

Hunter Ethics and Oversight Committee Report

Scott Harmon, Chair
301 467-0645 (cell) scott.w.harmon@verizon.net

Fellow Iles,

As ethical hunters and conservationists, we must respect our neighbors' property boundaries and abide by the hunting rules of our chapter and the laws of our state. You must register to hunt our property on our website. Just click the link to do so <https://bcciwla.org/b-cc-iwla-chapter-hunting-rules/>. Here you will read our rules and acknowledge that you have read them and will respect our property boundaries. If you shoot a deer and it crosses onto our neighbor's property, you must call me to get permission to enter their property to continue tracking and recovery. My number is above.

Just a gentle reminder, you must display your current B-CC IWLA sticker when parking on the property. This is immensely helpful to the Hunter Ethics Committee as we are monitoring who is on our property during the hunting seasons. Those that do not display a sticker could potentially be a

REMEMBER...

Guest hunters **are not** permitted at B-CC IWLA.

poacher/trespasser. We are actively working with DNR to catch those people who are breaking the law. Our farm has a no guest hunter policy so only members are allowed to hunt after registering on our website. You are also required to carry your membership card with you while hunting as your proof of permission to hunt along with a photo ID. If you see DNR on the property, they may ask to see your membership card.

Finally, let us be courteous and polite while in the field. If someone is hunting your favorite spot, move to a new spot. I am sure you can find another honey hole on our 623-acre farm.

If you have any questions, please do not hesitate to call me.

As always be safe out there.

I was asked why I have contributed to the B-CC IWLA Land Fund for over 20 years?

Tom Sigman

I contribute to ensure my grandchildren will have a place to shoot and hunt. I contribute to the B-CC IWLA Land Fund to protect our conservation farm from the total detrimental effects of development on our boundaries. When I look at my grandchildren and think about how much more development will take place during their lifetime, I am concerned about their future opportunities to experience a natural environment of woodlands, ponds and streams, and open fields. I contribute to help protect my chosen life style and system of values. I contribute for my family, your family, and most particularly for the families of the B-CC IWLA that will benefit from my contributions as my family has benefited from the contributions of those that went before me. I have witnessed the tremendous power of our chapter's Land Fund to accomplish what others only dream of, the purchase of surrounding property.

2022 Land Fund

As a member of the B-CC IWLA, I want to do my part and contribute the following amount to the B-CC IWLA Land Fund Campaign.

Name _____

Address _____

City _____ State _____ Zip _____

_____ \$50 _____ \$100 _____ \$200 _____ \$500 _____ \$1000 _____ OTHER

Your contribution is tax deductible.

Please mail contribution form and check (made payable to B-CC IWLA) to B-CC IWLA, PO Box 542, Poolesville, MD 20837 or donate via paypal on the Chapter's website, www.bcciwla.org.

Shotgun Range Report

Warner Parks, Committee Chair
240 620-6942 wparks29@gmail.com

The range is operating under winter hours – 9:00am to 4:00pm.

Please pick up your empty shotgun shells and trash when finished shooting and keep the range clean and restocked for the next range officer and shooters.

All Shotgun Range Equipment is to be used by pre-qualified Shotgun Range Officers ONLY. If any equipment is malfunctioning, please let me know.

INTERESTED IN BECOMING A SHOTGUN RANGE OFFICER

We are scheduling a Shotgun RO Course on Saturday, February 4, 2023 at 10:00am. If you are interested, use the SignUp Genius link below. You will be contacted a week before the course with the details.

<https://www.signupgenius.com/go/10C0D4DACA28A7F8C25-shotgun3>

RANGE OFFICER SCHEDULE DECEMBER

Sunday, December 4	Joseph McGovern, Jim O'Connell
Sunday, December 11	Richard Drummond, Need a Range Officer
Sunday, December 18	Need Range Officers
Sunday, December 25	NO Range Officers on Duty

HOURS OF OPERATION (Winter Hours)

Sundays	
Trap, Skeet, Sporting Clays	9:00am to 4:00pm

Calendar Submissions

Meetings and events that need to be added to the website calendar and newsletter calendar should be sent to 1st Vice President Carol Hulce-Efdimis, carol2017@aol.com, and Corresponding Secretary Janet Lamkin, j.lamkin@comcast.net.

FeederWatch News and Seneca Christmas Bird Count

Diane Seward
Citizen Science Projects Coordinator
trina65@verizon.net

On Sunday, December 18 we will once again host the **Montgomery Bird Club (MBC)** for a portion of the sixty-third Sector 7, Seneca Christmas Bird Count (CBC). The CBC is an annual nationwide event first held in 1958 and organized by The Audubon Society. Ten MBC birders, plus two chapter member escorts will meet at 7 a.m. at the chapter house and set out in two groups for the morning count, which typically lasts until noon. If you are interested in joining the count, please let me know and I will put you in touch with the MBC count compiler, Jim Nelson.



PHOTO BY DIANE SEWARD

FeederWatch season has begun. Chapter members fill the feeders behind the chapter house and count the birds that arrive to sample the sunflower seed and suet for an hour or so on weekend mornings from the comfort of the chapter house. The count is reported to Cornell University's Lab of Ornithology. If you would like to participate, please email me. Newcomers are most welcome! Counting birds is educational, interesting, and helpful to the scientists who analyze population trends. We are happy to partner newcomers with old hands.

**Wishing you and your family
Happy Holidays!**



Hunting Logbook

We ask that deer and turkeys taken on our farm be recorded either in our game logbook, located outside the chapterhouse's main door, or by sending an email to andupton9@hotmail.com. When reporting your deer (or turkeys), we ask for the following information; your name, doe or buck (antler count), date and weapon used and the total number of ticks found on the ears of your deer. Other details may also be included such as estimated weight or unusual features.

Reprinted from Wildlife Report by Larry Anderson – November 2022 Newsletter.

DUE DATE

January Newsletter Articles

Friday, December 23

**Submit articles to:
j.lamkin@comcast.net**

**If the article contains photos, please
submit them as separate files.**

Greetings B-CC Ikes!

2023 is right around the corner. Let's start the New Year off right out in nature with family and friends at the farm on New Year's Day!

We will be hosting a New Year's Day Pajama Brunch (pajamas optional) to complement our Shotgun, R&P, and Archery ranges being open from 9:00am to 4:00pm. Brunch starts at 11:00am. It's never too early to get out on the range. And then you can say, "I was at the range every day this year."

Enjoy our "Build Your Own Waffle" bar, cinnamon rolls, bagels, egg casserole, bacon, juice, coffee, and tea. Mimosa's and Bloody Mary's available to those over 21 that are not shooting.

What? You don't shoot? No problem! Hike one or all of our many scenic nature trails. The farm is stunning all year round.

We'll also bring the comfy boardroom furniture into the main room where we'll have a roaring fire going. And the TV will be in the main room too for viewing all your favorite Sunday afternoon football games. Better yet, start your own game out on the lawn. Folks are welcome to bring potluck snacks and beer for football.

So join us New Year's Day at the farm and take in the not-to-be-missed beautiful Christmas decorations at the chapter house one more time before they come down January 7th.

See you there!

*Merry Christmas and Happy New Year
Elaine, Meg, Carol, John*

Large Pond – November 2022



PHOTO BY ARTHUR BELENDIUK

Interpretative Walk in the Woods -- 2022

Mark Gochnour
mgdonutman@gmail.com

This year's Interpretative Walk on November 8 and 9 with the Global Ecology 9th graders from Poolesville High School was a remarkable experience. Mark Gochnour, Gregg Gochnour, Frank Parker, and Michael Dawson were the presenters as Butch Mezick, our mentor, was unable to directly assist this fall, but the crew had been well prepared. All were veterans from previous years. Beginning in 2009, this cooperative arrangement between the B-CC IWLA and the school has led to more than 1,000 students and teachers visiting the chapter property.

Mark Gochnour and Butch met over the summer and reviewed the Power Point Template that was created of the need-to-know material for this annual program. Additionally, Mark had created a two-page document, *Lessons I Have Learned – Things To Be Aware of When Exploring/Connecting with Nature*. He sent it to Ms. Binns, who oversees the Global Ecology Program, and it was distributed to the 9th grade students ahead of their tour. One of the goals of the Interpretative Walk in the Woods is to make students more observant, to use the knowledge they learn over their four years in the program now and throughout their life and in their future endeavors. This document is available if anyone is interested by contacting Mark.

Setup was done as usual on the Tuesday before the four field trip visits on Wednesday and Thursday and the guides appreciate that no one disturbs the deer skulls and other items which are placed in The West Woods in preparation for the nearly 90 students who come each year. The morning groups show up about 8:30am and the second arrives about 11:45am. There is much to cover in the 2 1/4-hour tour with stopping at the twelve spots where important knowledge is shared. After the bus stops off at the gate on River Road, the group walks through the County land next to the chapter and share about how important soil is, not dirt, to survival. Gregg presented the components of soil and shares how critical that average of 6 inches is for the food that is grown and eaten and how little land is arable. At the second stop, Michael Dawson explained about the American Chestnut and the efforts to bring it back from extinction from the blight introduced in the early 1900s. Until that catastrophe, forty percent of the eastern forests included this tree and now very few American Chestnut trees exist in the woods anywhere. Frank Parker next spoke about trash and how its existence in the woods can last from weeks to millions of years depending on whether it is organic or manmade. Gregg explained to the groups about three species of oak trees and how to identify them by their bark and leaves. Usually, invasive species are done at earlier stop but for some reason, they were not a visible in their usual location, so at a different spot, Mark shared about their accidental and intentional transplanting to new environments, the lack of predators, and their impact on local plants and the difficulty in removing them.

The habits of bucks, does, fawns were presented at the next two locations by Frank Parker. A mock deer scrape had



Fungi on a fallen log near the well.

PHOTO BY MARK GOCHNOUR

been created on Tuesday with an antlered deer skull placed at the base of the small tree with an overhanging branch (FYI – no urine involved). However, it caused a reaction in the woods before Wednesday morning's group arrived. Near a neighboring tree, the leaves were all stirred up, a new scrape had been created, and the skull was found ten feet away from its original location. Whether it was a prank by a hunter or animal it was quite interesting to discover. Further up the hill from that location, the students could see Ashburn, Virginia and the high-rise buildings there. This spot has been used for years to show the difference between the zoning in Virginia and the protective zoning the AgReserve currently enjoys. Discussed at this local location included the characteristics and the importance of habitat – food, water, cover, space, and their arrangement and how the Pittman-Robertson Act should be celebrated for what it has accomplished over the past 85 years. The billions of dollars collected as an excise tax, supported by hunters and others, has made a huge difference in wildlife management, animal populations, and preservation and improvement of habitat.

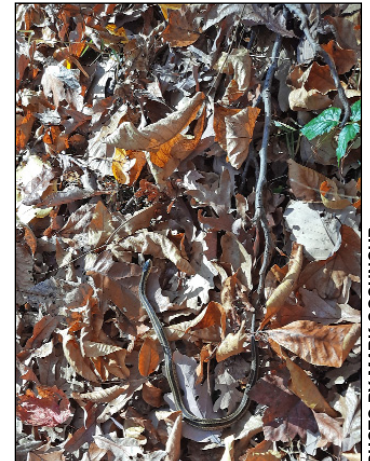
The next two stops included Mark talking about the abilities, characteristics, and habits of wild turkeys, the successful efforts that were made to bring them back from near extinction, and the critical situation of water both locally, nationally, and globally. Gregg spoke about the process of photosynthesis and without it there would be no life on earth - no oxygen to breathe and no plants for animals to eat, which impacts the entire food chain.

At the penultimate stop, the students have a required oral exam. They have a few minutes to retrieve something around them, which relates to what they heard about. They must speak about the turkey feather, a leaf, a tree, trash, the hunk of metal, a turtle shell, an antler and other items around them, which they picked up or can point to. Then it is onto the well and back to the buses so the students can return to Poolesville High School.

Two snakes were seen this year, one a garter snake during the set up and some students, a teacher, and Gregg saw a large black snake on Wednesday afternoon.

Periodically, this Walk is offered to others besides the Global Ecology students and their teacher/chaperones. If you are interested, please watch for the opportunity to participate in your own hands-on Interpretative Walk in the Woods experience. One such excursion was filmed because of the COVID quarantine, and the high school field trip was done virtually that year. Although it is not the same as live in person version, the video is available on YouTube.com – Interpretative Walk in Woods.

<https://youtu.be/6MEJ0df9h68>



*Garter Snake in West Woods
alongside the trail*

PHOTO BY MARK GOCHNOUR



Black Snake

PHOTO BY JANICE BAILEY